

Strategic Management Plan Shaktoolik

Interagency Working Group
Meeting #4

Agenda

- Safety Moment and Introductions
- Agenda Review and Ground Rules
- Project Background
- Community Message
- Critical Projects Review
- Next Steps

Ground Rules

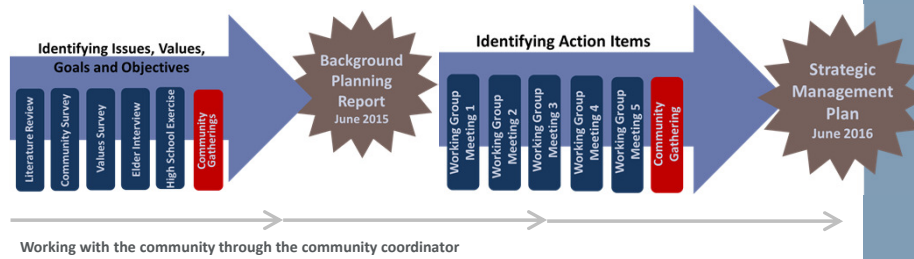
- Keep the community's priorities first in mind
- Safety first! All projects are important, but focus on **Immediate Safety.**
 - Save lives
 - Save property
- Share the air
- Keep side conversations to a minimum

And please...silence your cell phone!

Alaska Community Coastal Protection Project

- Objective
 - To increase community sustainability and resilience to the impacts of natural hazards.
- Essential Components
 - Strong community leadership
 - Agency support and collaboration
 - Careful, effective planning

The Process



Phase 1





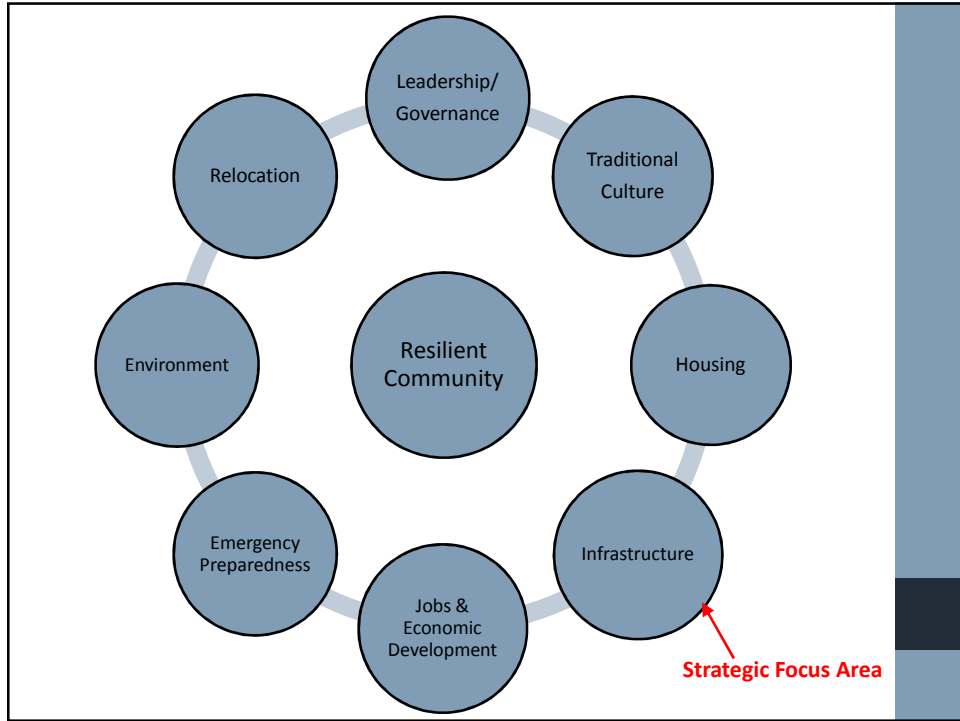
Distribution of *Draft Background Planning Report*
(review & comment)

Review of issues identified by community

Identification of solutions to address community issues

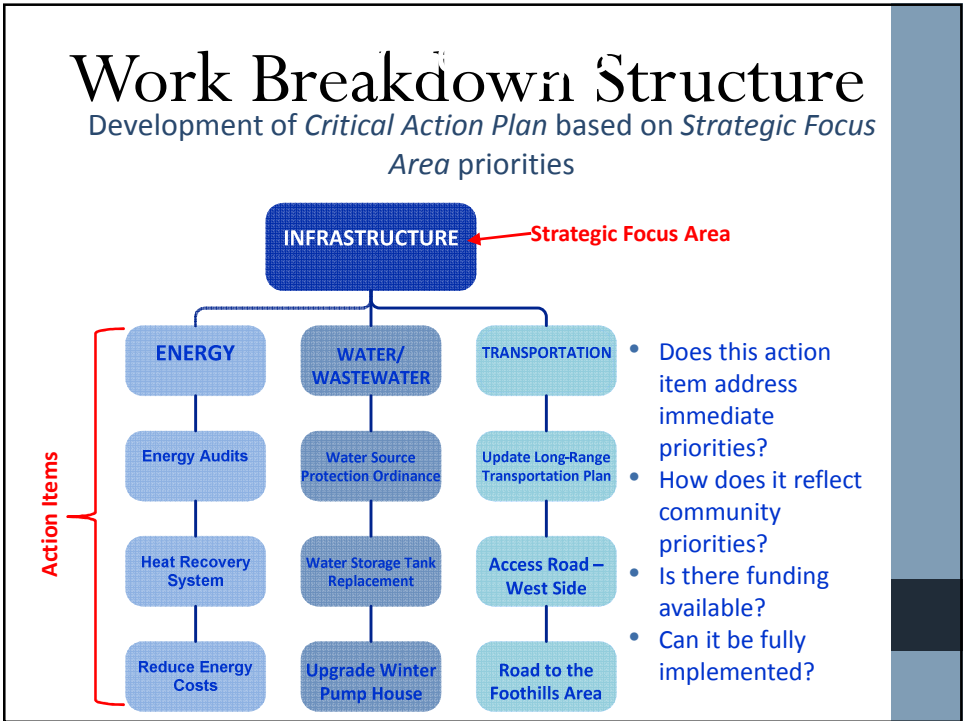
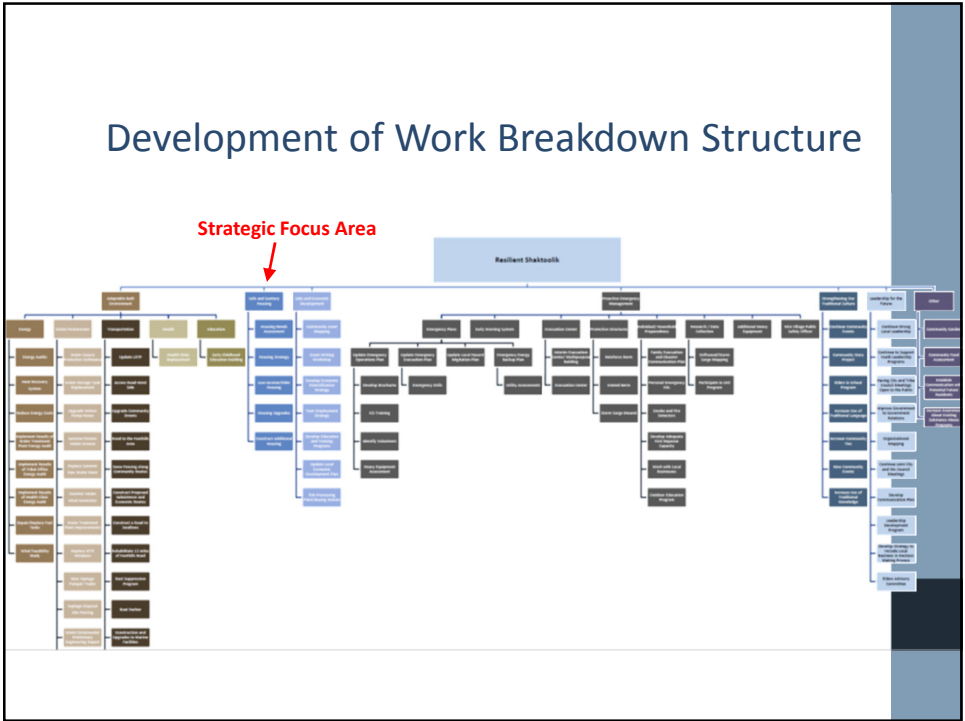
Formulation of action items from solutions

Identification of *Strategic Focus Areas*



Kivalina Strategic Management Plan – Preliminary Planning Schedule - DRAFT			
Strategic Focus Area	Short-Term Action Items (0-5 years)	Mid-Term Action Items (6-10 years)	Long-Term Action Items (11+ years)
Emergency Preparedness	Update emergency operations plan	Evacuation Center	Update emergency operations plan
	Practice emergency operations plan/emergency drills	Update emergency operations plan	Practice emergency operations plan/emergency drills
	Informational material regarding emergency preparedness	Practice emergency operations plan/emergency drills	Update local hazard mitigation plan
	Interim evacuation center	Update local hazard mitigation	Update evacuation plan
	Evacuation plan	Update evacuation plan	
	Establish early warning system		
	Increase first response capacity		
	Business continuity planning		
	Family evacuation and disaster communications plans		
	Install smoke and fire detectors		
	First aid training		
	Outdoor education programs		
	Emergency energy backup plan		
	Update local hazard mitigation plan		
	Village Public Safety Officer		
	Participate in Local Environmental Observer (LEO) program		
Relocation (If community decides to relocate)	Commitment to move	Develop access to new site	Develop remaining infrastructure
	Site Selection	Develop long range transportation plan	Develop remaining housing
	Acquire title to site	Build initial housing	Restoration of old village site
	Survey site	Develop initial infrastructure	
	Identify quarry site	Cultural resources plan	
	Identify and prioritize community needs	Well at new site	
	Develop community layout plan		
	Infrastructure feasibility studies		
	Identify water source		
	Inventory resources that can be used at new village site		
	Detailed construction and financing plan		
	Leadership agreement		
Establish relocation committee*			

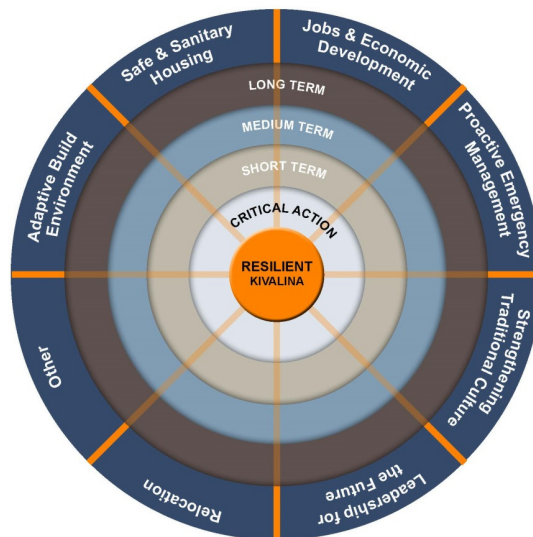
Meeting 2



Community Message



Action Plan



Critical Actions

- Identified at Interagency Working Group Meeting #3
- Critical projects that, if not completed in 5 years, will negatively impact community safety.
- Criteria:
 - Save lives
 - Save property
 - Can it be reused or re-purposed in another location
- Consider:
 - Does it address immediate priorities - Food, water, energy, shelter
 - How does it reflect community priorities – “Shelter in Place”
 - Is there funding available
 - Can it be fully implemented within 5 years

Critical Actions

- Emergency Plans/Drills
- Evacuation Center
- Family and Personal Emergency Kits
- Water/Wastewater Improvements

Emergency Plans/Drills

- **Key Issues:**
 - Update Emergency Plans
 - Operations Plan
 - Evacuation Plan
 - Conduct Drills
- **Responsible Party:** IRA, City
- **Potential Partners/Coordination:**

• DHS&EM	• ADEC
• DOT&PF	• Maniilaq Association
• DCCED	• EPA
• Denali Commission	• FEMA
• NANA Regional Corporation	• AVEC
• USACE	• VPSO
• USFWS	• School District
• Bureau of Indian Affairs	• Kivalina Native Corporation

Emergency Plans/Drills

- **Estimated Cost:** varies (typically under \$100,000)
- **Potential Funding Sources:**
 - State Legislative Grant - DCCED
 - Kivalina Native Corporation
 - City of Kivalina
 - Native Village of Kivalina
 - Denali Commission
 - BIA
 - DHS&EM (technical assistance)
 - FEMA

Evacuation Center

- **Key Issues:**
 - Safe place of refuge
- **Responsible Party:** IRA, City
- **Potential Partners/Coordination:**

<ul style="list-style-type: none"> • DCCED • Kawarek • DHS&EM • Denali Commission • NANA Regional Corporation • Village Safe Water • Bureau of Indian Affairs • ADEC • Maniilaq 	<ul style="list-style-type: none"> • Association • EPA • ANTHC • DOT&PF • Kivalina Native Corporation • School District • AVEC • USACE • DOT&PF • USFWS • ADF&G • Cold Climate 	<ul style="list-style-type: none"> • Housing Research Center • Relocate Kivalina • AEA • FAA • HUD • RurAL Cap • USDA • EDA
--	--	---

Evacuation Center

- **Estimated Cost:** \$20-50 million
- **Potential Funding Sources:**
 - State Legislative Grant
 - Kawerak Inc.
 - Kivalina Native Corporation
 - City of Kivalina
 - Native Village of Kivalina
 - Denali Commission
 - BIA
 - DOT&PF
 - Relocate Kivalina

Family and Personal Emergency Kits

- **Key Issues:**
 - To be prepared for emergencies and unforeseen events
- **Responsible Party:** IRA, City, Individuals
- **Potential Partners/Coordination:**

<ul style="list-style-type: none"> • DHS&EM • FEMA • DCCED • Denali Commission • NANA Regional Corporation • Bureau of Indian 	<ul style="list-style-type: none"> Affairs • ADEC • Maniilaq Association • EPA • ANTHC • DOT&PF • Kivalina Native 	<ul style="list-style-type: none"> Corporation • American Red Cross • School District
---	--	--

Family and Personal Emergency Kits

- **Estimated Cost:** varies
- **Potential Funding Sources:**
 - State Legislative Grant - DCCED
 - Kivalina Native Corporation
 - City of Kivalina
 - Native Village of Kivalina
 - Denali Commission
 - BIA
 - ANTHC
 - Private sources

Water/Wastewater Improvements

- **Key Issues:**

- Water source threatened by erosion
- Insufficient supply
- Running water/flush toilet

- **Responsible Party:** IRA, City

- **Potential Partners/Coordination:**

- | | | |
|-----------------|--------------------|-------------------|
| • DCCED | Water | • DOT&PF |
| • Kawarek | • Bureau of Indian | • Kivalina Native |
| • DHS&EM | Affairs | Corporation |
| • Denali | • ADEC | • Cold Climate |
| Commission | • Maniilaq | Housing |
| • NANA Regional | Association | Research Center |
| Corporation | • EPA | |
| • Village Safe | • ANTHC | |

Water/Wastewater Improvements

- **Estimated Cost:** varies

- **Potential Funding Sources:**

- State Legislative Grant - DCCED
- Kivalina Native Corporation
- City of Kivalina
- Native Village of Kivalina
- Denali Commission
- BIA
- ANTHC
- US Department of Agriculture – Rural Utilities Service Water and Environmental Programs
- Alaska Energy Authority
- EPA

Next Steps

- Community Meeting
- Draft SMP
- Optional SMP Workshop