

Strategic Management Plan Shaktoolik

Interagency Working Group
Meeting #4

Agenda

- Safety Moment and Introductions
- Agenda Review and Ground Rules
- Project Background
- Community Message
- Critical Projects Review
- Next Steps

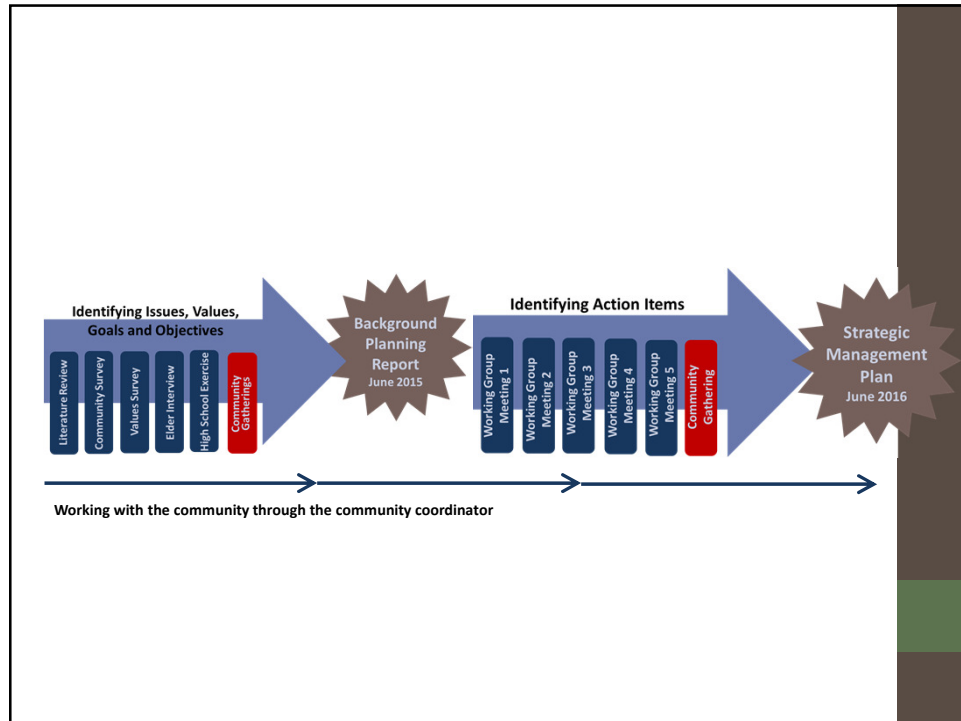
Ground Rules

- Keep the community's priorities first in mind
- Safety first! All projects are important, but focus on **Immediate Safety.**
 - Save lives
 - Save property
- Share the air
- Keep side conversations to a minimum

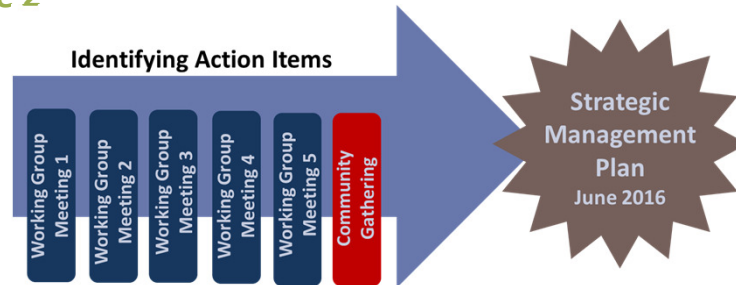
And please...silence your cell phone!

Alaska Community Coastal Protection Project

- Objective
 - To increase community sustainability and resilience to the impacts of natural hazards.
- Essential Components
 - Strong community leadership
 - Agency support and collaboration
 - Careful, effective planning

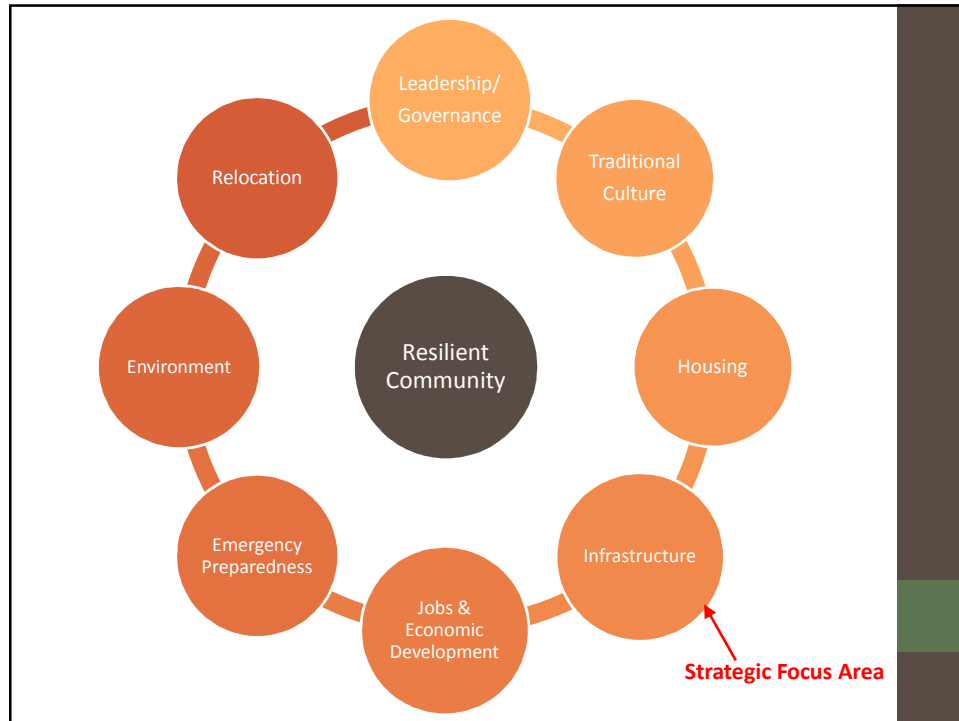


Phase 2



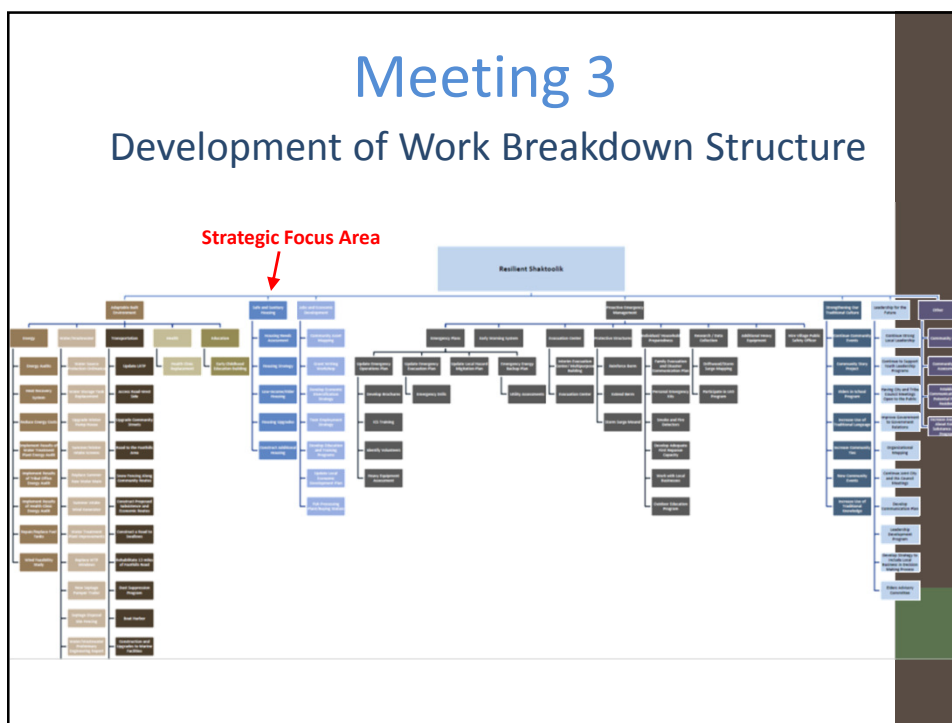
Meeting 1

- Distribution of *Draft Background Planning Report* (review & comment)
- Review of issues identified by community
- Identification of solutions to address community issues
- Formulation of action items from solutions
- Identification of *Strategic Focus Areas*



Kivalina Strategic Management Plan – Preliminary Planning Schedule - DRAFT			
Strategic Focus Area	Short-Term Action Items (0-5 years)	Mid-Term Action Items (6-10 years)	Long-Term Action Items (11+ years)
Emergency Preparedness	Update emergency operations plan	Evacuation Center	Update emergency operations plan
	Practice emergency operations plan/emergency drills	Update emergency operations plan	Practice emergency operations plan/emergency drills
	Informational material regarding emergency preparedness	Practice emergency operations plan/emergency drills	Update local hazard mitigation plan
	Interim evacuation center	Update local hazard mitigation	Update evacuation plan
	Evacuation plan	Update evacuation plan	
	Establish early warning system		
	Increase first response capacity		
	Business continuity planning		
	Family evacuation and disaster communications plans		
	Install smoke and fire detectors		
	First aid training		
	Outdoor education programs		
	Emergency energy backup plan		
	Update local hazard mitigation plan		
	Village Public Safety Officer		
	Participate in Local Environmental Observer (LEO) program		
Relocation (If community decides to relocate)	Commitment to move	Develop access to new site	Develop remaining infrastructure
	Site Selection	Develop long range transportation plan	Develop remaining housing
	Acquire title to site	Build initial housing	Restoration of old village site
	Survey site	Develop initial infrastructure	
	Identify quarry site	Cultural resources plan	
	Identify and prioritize community needs	Well at new site	
	Develop community layout plan		
	Infrastructure feasibility studies		
	Identify water source		
	Inventory resources that can be used at new village site		
	Detailed construction and financing plan		
	Leadership agreement		
	Establish relocation committee*		

Meeting 2



Community Message



Action Plan



Critical Actions

- Identified at Interagency Working Group Meeting #3
- Critical projects that, if not completed in 5 years, will negatively impact community safety.
- Criteria:
 - Save lives
 - Save property
 - Can it be reused or re-purposed in another location
- Consider:
 - Does it address immediate priorities - Food, water, energy, shelter
 - How does it reflect community priorities – “Shelter in Place”
 - Is there funding available
 - Can it be fully implemented within 5 years

Critical Actions

- Water and Sewer Upgrades
- Emergency Management
- Housing Upgrades
- Traditional Knowledge
- Leadership Development
- Government to Government Relations

Water and Sewer Upgrades

- **Key Issues:**

- Running water/flush toilets
- Additional water supply
- Protection of sewage lagoon

Responsible Party: IRA, City

Potential Partners/Coordination:

- | | | |
|-----------------|--------------------|--------------|
| • DCCED | Water | • ANTHC |
| • Kawarek | • Bureau of Indian | • DOT&PF |
| • DHS&EM | Affairs | • Shishmaref |
| • Denali | • ADEC | Native |
| Commission | • Norton Sound | Corporation |
| • NANA Regional | Health | |
| Corporation | Corporation | |
| • Village Safe | • EPA | |

Water and Sewer Upgrades

- **Estimated Cost:** varies

- **Potential Funding Sources:**

- State Legislative Grant
- Kawerak Inc.
- Shishmaref Native Corporation
- City of Shishmaref
- Native Village of Shishmaref
- Denali Commission
- BIA
- ANTHC
- US Department of Agriculture – Rural Utilities Service Water and Environmental Programs
- US Department of Agriculture Section 1603 grants
- US Department of Energy Tribal Energy Program
- Alaska Energy Authority

Emergency Management

- **Key Issues:**

- Response,
- Mitigation,
- Evacuation,
- Preparedness.

Responsible Party: IRA, City

Potential Partners/Coordination:

- | | | |
|-----------------------------|-----------------------------------|---------------------------------|
| • DHS&EM | • USFWS | • EPA |
| • DOT&PF | • Bureau of Indian Affairs | • FEMA |
| • DCCED | • ADEC | • AVEC |
| • Kawarek | • FAA | • VPSO |
| • Denali Commission | • Norton Sound Health Corporation | • School District |
| • NANA Regional Corporation | | • Shishmaref Native Corporation |
| • USACE | | |

Emergency Management

- **Estimated Cost:** varies (under \$100,000)

- **Potential Funding Sources:**

- State Legislative Grant
- Kawarek Inc.
- Shaktoolik Native Corporation
- City of Shishmaref
- Native Village of Shishmaref
- Denali Commission
- BIA
- DHS&EM (technical assistance)
- FEMA

Improved Housing

- **Key Issues:**

- Overcrowding/insufficient housing supply
- Poor condition (mold, poor ventilation, inefficient energy use, etc.)

- **Responsible Party:** IRA, City

- **Potential Partners/Coordination:**

- | | | |
|--|--------------------------------------|--|
| • DCCED | • Department of Agriculture | • EPA |
| • Kawarek | • Alaska Housing Finance Corporation | • Cold Climate Housing Research Center |
| • Denali Commission | • RuralCap | • Shishmaref Native Corporation |
| • Bering Straits Regional NANA Housing Authority | • HUD | |
| • Bureau of Indian Affairs | • Bering Straits Health Corporation | |

Improved Housing

- **Estimated Cost:** varies

- **Potential Funding Sources:**

- State Legislative Grant
- Kawerak Inc.
- Shaktoolik Native Council
- Denali Commission
- Bering Straits Regional Housing Authority Housing Preservation Grant
- US Department of Agriculture Single Family Housing Repair Loans and Grants
- Alaska Housing Finance Corporation Weatherization Program
- RuralCAP Weatherization Program
- HUD Section 184 funding
- HUD Indian Community Development Block Grant
- BIA

Traditional Knowledge

- **Key Issues:** Increase use of traditional knowledge
- **Responsible Party:** City, IRA
- **Potential Partners/Coordination:**
 - Shishmaref Native Corporation
 - IRA
 - DCCED
 - Denali Commission
 - First Alaskans Institute
 - ANTHC
 - Kawarek
 - Bering Sea Elders
 - School District
 - Alaska Native Science Commission
 - University of Alaska
 - Alaska Native Knowledge Network (UAF)
 - Researchers
 - ADF&G
 - USF&WS
 - NMFS

Traditional Knowledge

- **Estimated Cost:** varies
- **Potential Funding Sources:**
 - State Legislative Grant
 - Kawerak Inc.
 - Denali Commission
 - ANTHC
 - Shishmaref Native Corporation
 - Native Village of Shishmaref
 - City of Shishmaref
 - RuralCAP
 - Research projects
 - USF&WS

Leadership Development

- **Key Issues:** Developing future leaders
- **Responsible Party:** City, IRA
- **Potential Partners/Coordination:**
 - City Corporation
 - IRA
 - DCCED
 - Denali Commission
 - Kawarek
 - Bering Strait Development Corporation
 - Bering Strait Native Corporation
 - Norton Sound Economic Development Corporation
 - Bering Straits School District
 - University of Alaska
 - ANTHC
 - Shishmaref Native Corporation

Leadership Development

- **Estimated Cost:** varies
- **Potential Funding Sources:**
 - State Legislative Grant
 - Kawerak Inc.
 - Shishmaref Native Corporation
 - Native Village of Shishmaref
 - City of Shishmaref
 - BIA
 - Denali Commission
 - State of Alaska
 - DCCED
 - ANTHC
 - Alaska Conservation Fund

Government to Government Relations

- **Key Issues:** Improve coordination among different levels of government
- **Responsible Party:** City, IRA
- **Potential Partners/Coordination:**
 - City
 - IRA
 - DCCED
 - Denali Commission
 - Bering Strait Development Corporation
 - Bering Strait Native Corporation
 - Norton Sound Economic Development Corporation
 - Bering Straits School District
 - ANTHC
 - Kawarek
 - State of Alaska
 - Other State and Federal Agencies

Government to Government Relations

- **Estimated Cost:** under \$50,000
- **Potential Funding Sources:**
 - City of Shishmaref
 - Native Village of Shishmaref
 - Shishmaref Native Corporation

Next Steps

- Community Meeting
- Draft SMP
- Optional SMP Workshop