

Strategic Management Plan Shishmaref

Interagency Working Group

Meeting #1

Agenda

- Safety Moment, Introductions, Agenda Review
- Meeting Purpose, Role of Agency Coordination, Timeline
- Community Welcome and Our Story/Our Values
- Work to Date
- Other Area Projects
- Issues and Solution
- Next Steps

Ground Rules

- Keep the community's best interests first in mind
- Share the air—everyone will have an opportunity to speak
- Address issues, not personalities
- Look for the donut, not just the hole
- Every idea is a good idea
- Keep side conversations to a minimum

And please...silence your cell phone!

Alaska Community Coastal Protection Project



Alaska Community Coastal Protection Project

- Funded through grant DCRA applied for through the federal Coastal Impact Assistance Program in 2009.
- Inspired by work DCRA has done with the village of Newtok and the Newtok Planning Group

Objective

- Strong community leadership
- Agency support and collaboration
- Careful, effective planning

Essential Components

- To increase community sustainability and resilience to the impacts of natural hazards.

Strong Community Leadership

- Community grant for full-time Community Coordinator to:
 - Represent community at interagency working group meetings
 - Work with project staff, inter-agency group, and planning contractor on resiliency plan
 - Advocate for funding to carry out resiliency plan
- DCRA provides technical assistance and other support to Community Coordinator

Agency Support and Collaboration

- Organization of interagency working group (state/federal agencies and regional organizations):
- To coordinate resources and technical assistance to help community implement resiliency plan.

Careful, Effective Planning

Comprehensive Strategic Management Plan:

- Contractor hired to work with community and inter-agency working group to develop strategic management plan -- “blueprint” for how the community and agencies will proceed over the next 10 – 20 years to accomplish the community’s recommended actions.
- Plan is community-driven, with technical support provided by agencies:
 - Sequencing of activities and projects to implement plan
 - Potential funding sources; identification of critical funding cycles and opportunities
 - Identification of potential resource-leveraging opportunities among agencies
 - Identification of construction windows

Interagency Working Group

- Coordinated assistance to community to identify and achieve resilience actions, based on conventional funding channels of agencies
- Benefits include:
 - leveraging of resources
 - better coordination of work
 - reduced conflicts in project timelines and construction windows

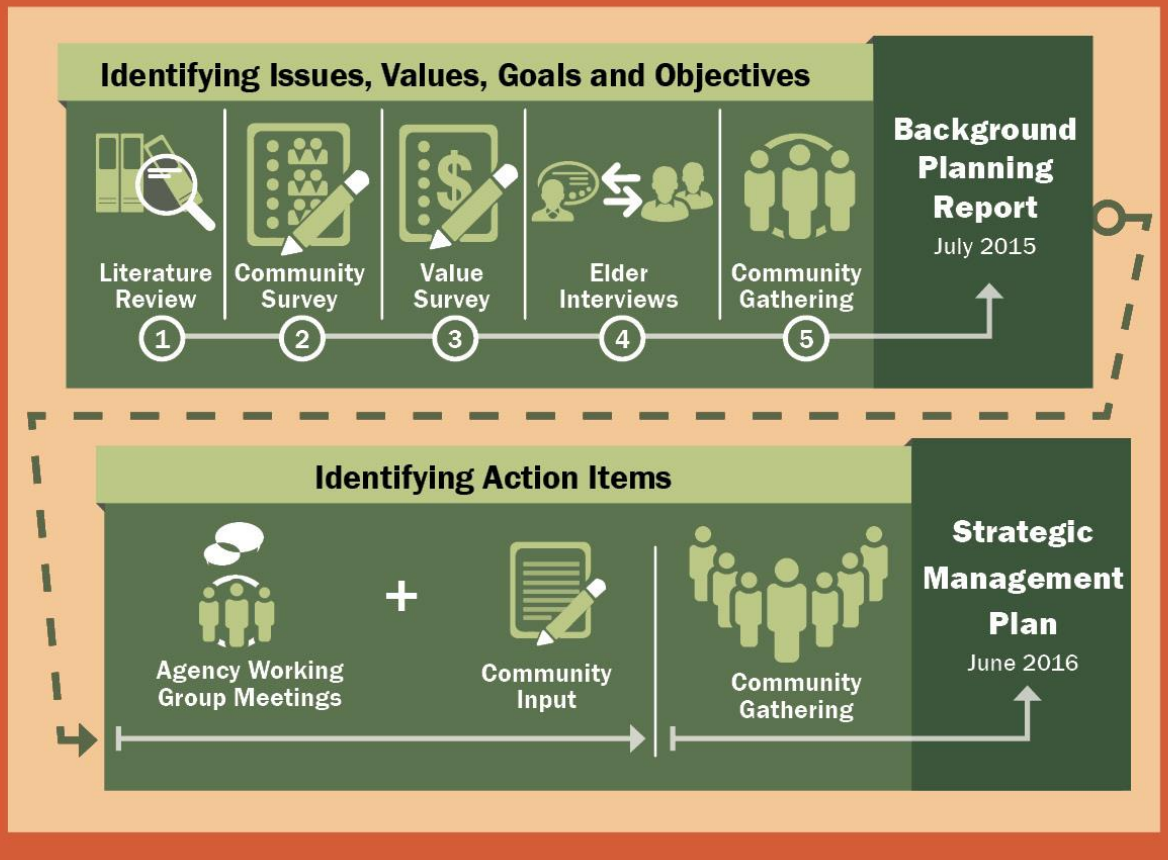


Community Welcome



Work to Date

Working with the community through the community coordinator



Draft Vision Statement

- Shishmaref is a safe and resilient community. We want to relocate to a new village that respects and honors our Inupiaq culture and traditional values. We will work together and with partners to develop projects and policies to protect our residents, infrastructure, natural environment, and subsistence resources. We will preserve and enhance our community for us and future generations.

Draft Guiding Principles

- Residents must be safe from natural hazards and growing threats of flooding and erosion
- Respect and honor each person's views and ideas
- Make decisions openly and as a community. Everyone's participation is valuable as each person brings a different insight, perspective, and knowledge
- Include local input in the process Protect the natural environment
- Respect our traditional culture
- Use funds wisely
- Develop in a manner that strengthens the community
- Encourage local hire

Other Area Projects

Issues and Solutions

- Lack of/Inadequate Community Infrastructure
- Inadequate Housing
- Jobs and Economic Development
- Extend and Maintain Seawall
- Lack of Evacuation Shelter/Place of Refuge
- Funding
- Other Issues

Next Steps

- What other agencies/organizations need to participate in the process?
- Other potential solutions?
- Potential funding sources?
- Next meeting – mid-October