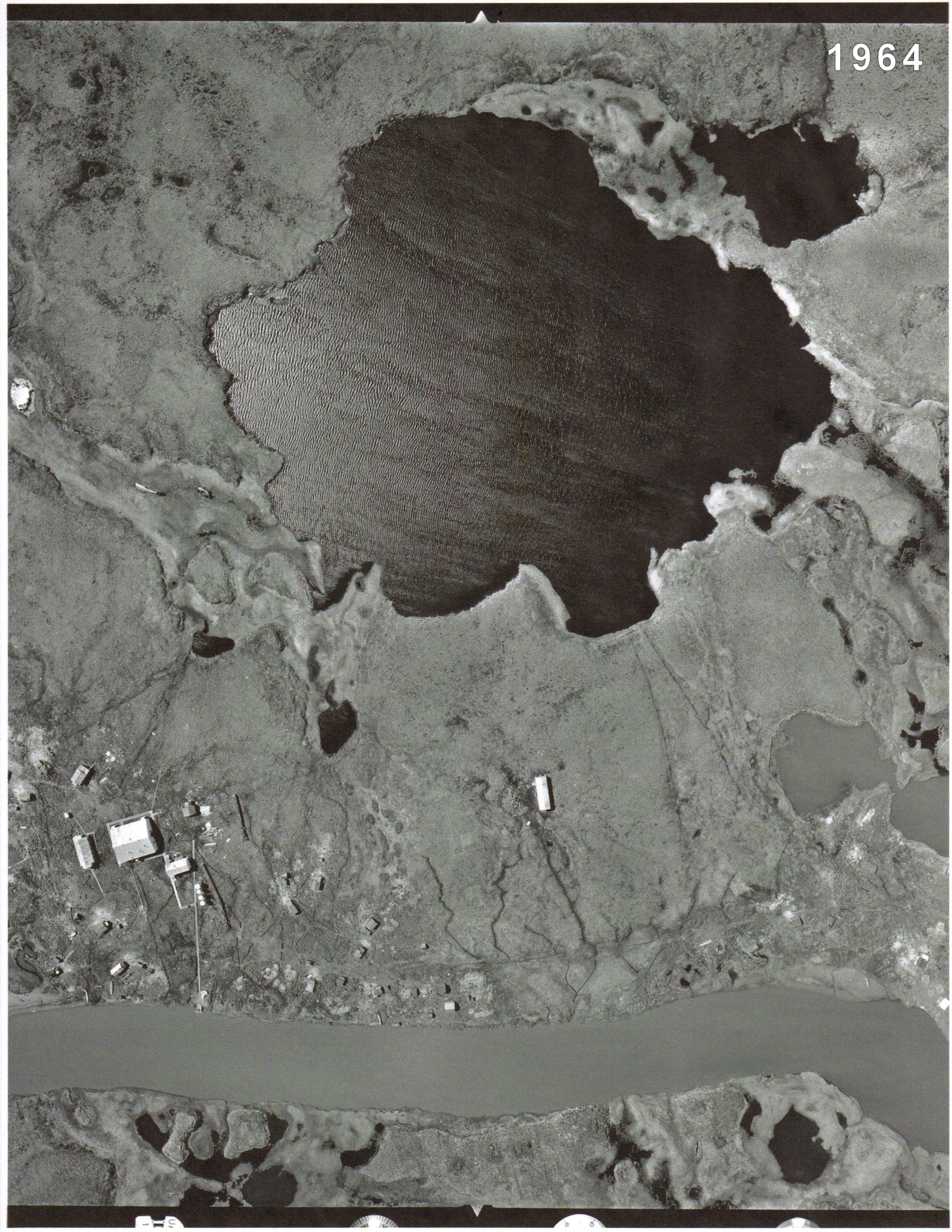
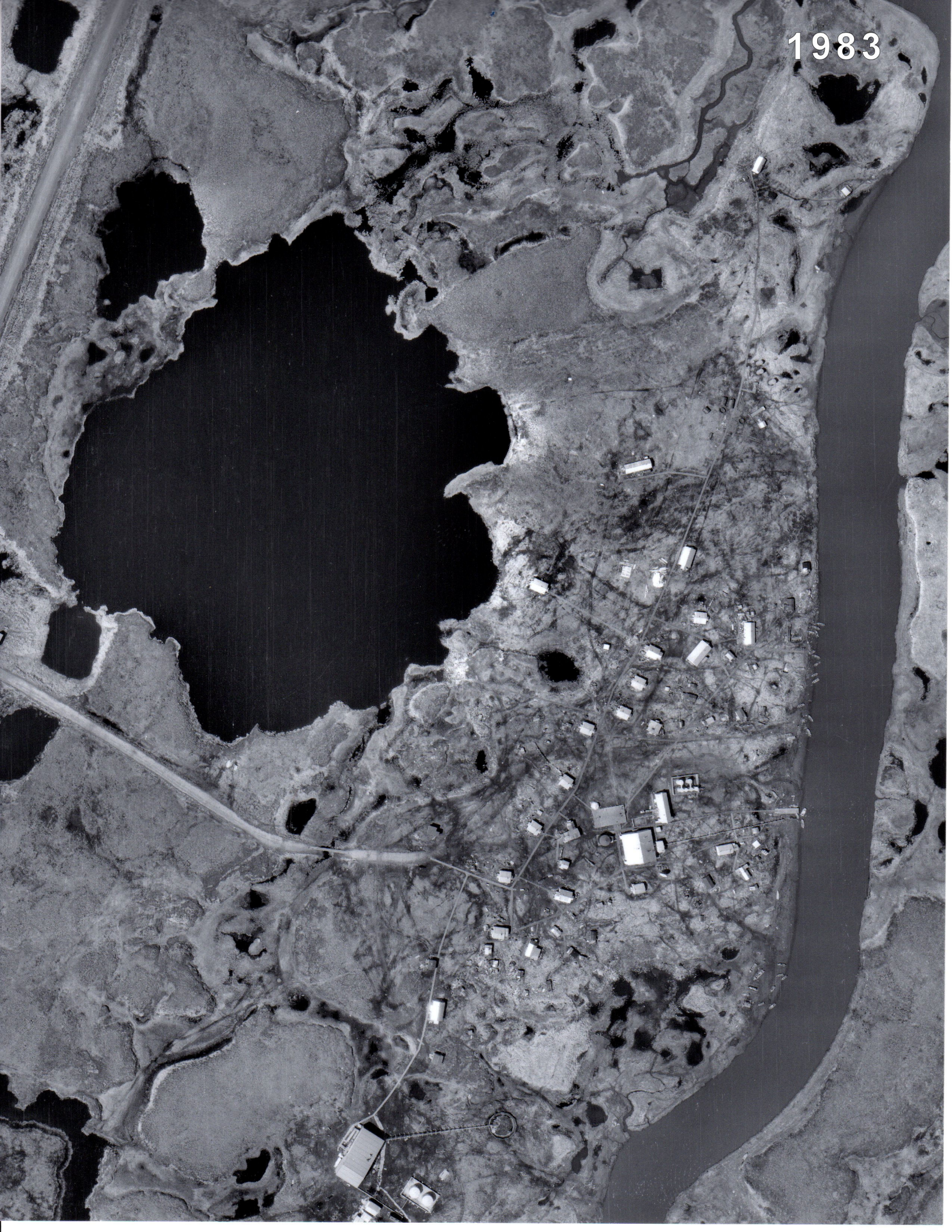


APPENDIX C
AERIAL PHOTOGRAPHS

1964



1983



1996



2005



APPENDIX D
SITE PHOTOGRAPHS

Site Reconnaissance Photographs

Landfill (#15 on Figure 1)



Photo 1: Looking east at landfill across Newtok River at low tide.



Photo 2: Boardwalk leading to landfill

Site Reconnaissance Photographs

Landfill (#15 on Figure 1)



Photo 3: Landfill contents



Photo 4: Landfill contents and burn box

Site Reconnaissance Photographs

Hazardous Materials Shed behind NTC Building (#5 on Figure 1)



Photo 5: Hazardous materials shed



Photo 6: Some material falling out of the shed

Site Reconnaissance Photographs

Appliance / Snow Machine Staging Area (#7 on Figure 1)



Photo 7: Looking south at staging area



Photo 8: Staging area contents, Old BIA School in the background

Site Reconnaissance Photographs

Bagged Waste Staging Area (#8 on Figure 1)



Photo 9: Bagged waste slated for transport across the river to landfill

Newtok School Tank Farm (#1 on Figure 1)



Photo 10: Tank farm, damaged fence, drum storage within containment area

Site Reconnaissance Photographs

Newtok School Tank Farm (#1 on Figure 1)



Photo 11: Hydrocarbon staining and stressed vegetation in SW corner.
Containment wall in disrepair.



Photo 12: Rust staining in SE corner

Site Reconnaissance Photographs

Newtok School Tanks (#1 on Figure 1)



Photo 13: 250 gallon tank with metal container box below.



Photo 14: Stressed vegetation near power generation conex 2000 gallon tank.

Site Reconnaissance Photographs

Old BIA School Tank Farm (#9 on Figure 1)



Photo 15: Fencing in disrepair, wood platforms subsiding

Newtok Village Council Tank Farm (#12 on Figure 1)



Photo 16: Vertical tank farms

Site Reconnaissance Photographs

Newtok Village Council Tank Farm (#12 on Figure 1)



Photo 17: Creosote treated wood platforms, containment wall in good condition



Photo 18: Horizontal tank farm

Site Reconnaissance Photographs

Ungusraq Power Company Tank Farm (#14 of Figure 1)



Photo 19: UPC tank farm



Photo 20: Inside tank farm, hydrocarbon staining below fill spouts.

Site Reconnaissance Photographs

Newtok Traditional Council Tanks (#13 on Figure 1)



Photo 21: 10,000 gallon, double walled tank, no longer being used.



Photo 22: 3000 gallon tank, in use, no secondary containment

Site Reconnaissance Photographs

Tom's Store Tanks (#10 on Figure 1)



Photo 23: 10,000 gallon, double walled tank, empty and out of service



Photo 24: 3000 gallon tank, no secondary containment, empty and out of service.

Site Reconnaissance Photographs

Sewage Lagoon (#6 on Figure 1)



Photo 25: View on sewage lagoon, Newtok River in background.



Photo 26: Piping from washeteria in the background. Piping from Newtok School in the foreground.

Site Reconnaissance Photographs

UPC Generator Building (#4 on Figure 1)



Photo 28: UPC generator building and washeteria water holding tank



Photo 27: Significant oil staining below building.

Site Reconnaissance Photographs

UPC Generator Building (#4 on Figure 1)



Photo 30: Oil stained soil near genset motor.

Old BIA School Building (#9 on Figure 1)



Photo 29: School built in the 1960s. Building is boarded up and no longer used.

Site Reconnaissance Photographs

BIA Built Home – Earliest Newtok Housing



Photo 32: Flooring a mix of old and new tiles with potential for ACM.



Photo 31: Peeling paint may be lead containing or lead based.

Newer Houses



Photo 33: Most homes have a heating oil tank.