

# Napakiak Community Meeting

Response to Erosion and Flood Hazards

# Napakiak Master Planning Wednesday November 6, 2019

## COMMUNITY MEETING

### ***Introduction***

**2:00–2:15 PM**

- Meeting initiation, introductions, agenda and purpose:
  1. Review information on projected erosion and flooding
  2. Review options and resolve general approach to erosion and flooding
  3. Approve/set stage for approval of required community resolutions
  4. Review and refine details of near-term subdivision plan
- Summary of Summit team responsibilities and schedule
  - Submit Community Development Block Grant for road: Nov 22, 2019
  - Complete erosion/flooding response master plan and schedule: Dec 20, 2019
  - Note: Napakiak Inter-Agency Working Group meeting: Nov 13th 1:30-3:30 (Anchorage)

### ***Brief Updates on Erosion and Flood Projections; Partner Work***

**2:15–2:45 PM**

- Erosion and flood projections
  - Brief background; data available today and hoped for in the future
  - Strengths and limitations of the Two Bears erosion projections
- Brief updates on partner work to date and plans for upcoming year:
  - LKSD
  - ADOT&PF
  - Napakiak Corporation

### ***BREAK***

**2:45–3:00 PM**

## **BREAK**

**2:45–3:00 PM**

## **Near and Longer-Term Strategies: Overview and Discussion**

**3:00–4:30 PM**

*Share results of leadership meeting as starting point for discussion*

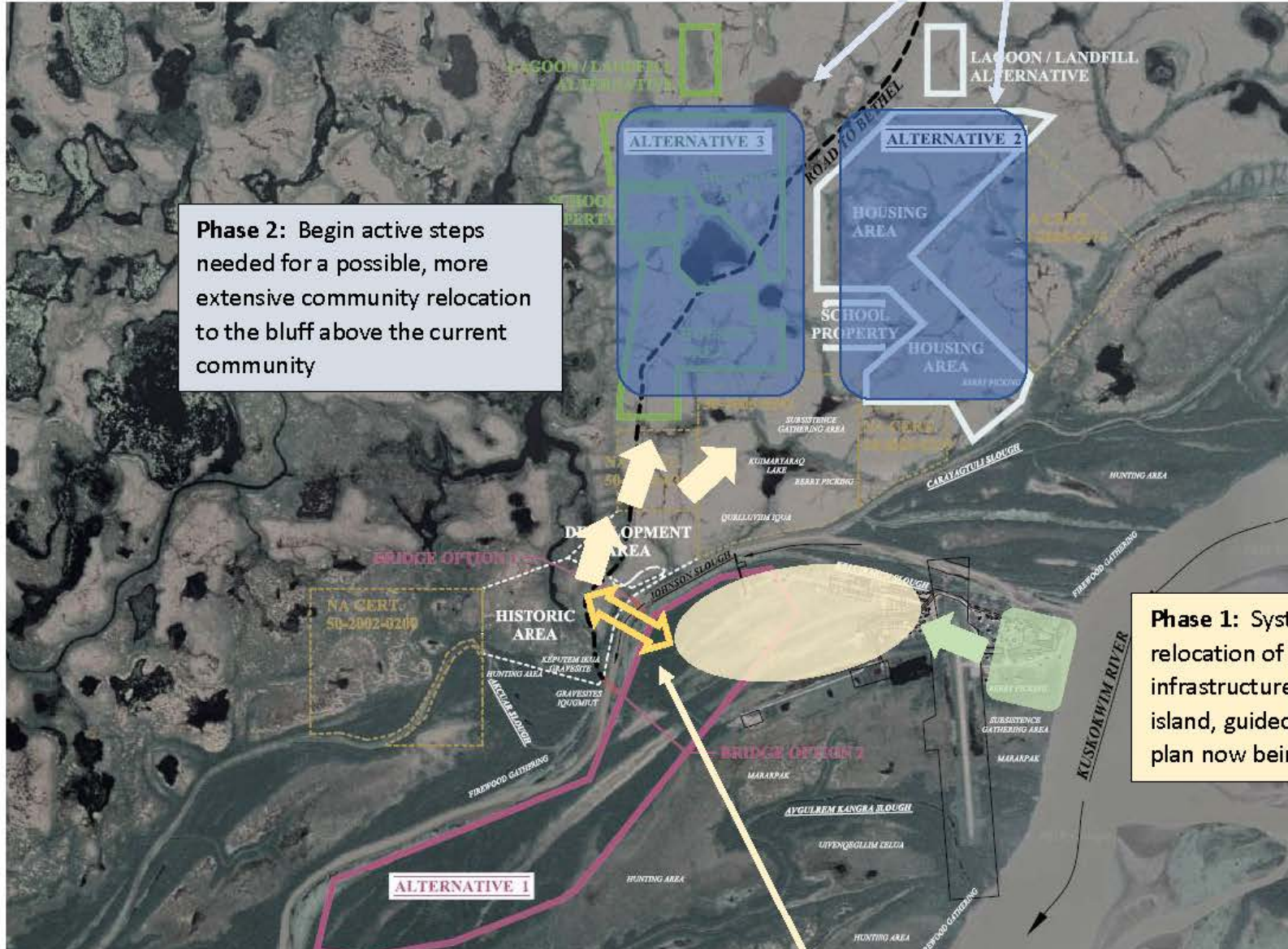
- Introduction to alternatives and needed community resolutions
  - Resolutions required; starting drafts (*see attached handout*)
  - Community goals/reference points for decisions (*see attached handout*)
- Alternatives discussion
  - Option 1A* – Phased, flexible retreat (first to back of island; reserve options for continuing to bluff)
  - Option 1B* – Phased retreat (first to back of island, then directly as possible to the bluff)
  - Option 2* – Remain in place, take incremental responses to erosion and flooding
- Subdivision plan discussion: characteristics, sizes and locations
  - school
  - washeteria/water treatment
  - store
  - cemetery
  - power plant
  - residences & lot sizes
  - roads
  - what else?

## **Summary of Conclusions**

**4:30–5:00 PM**

- Summarize leadership/community conclusions
- Formal resolutions to share with agency partners
- Other next steps?

Two options for Phase 2 re-location



Phase 2: Begin active steps needed for a possible, more extensive community relocation to the bluff above the current community

Phase 1: Systematic near-term relocation of structures and infrastructure to the rear of the island, guided by the subdivision plan now being completed.

CONCEPTUAL OVERVIEW – PHASED RELOCATION

Most practical location for bridge over Johnson Slough



# City of Napakiak

## RESOLUTION # \_\_\_\_\_

### **A RESOLUTION UPDATING THE IMMEDIATE NEEDS AND LONG TERM PLANNING PROCESS FOR THE NAPAKIAK MANAGED RETREAT EFFORT**

**WHEREAS**, the City of Napakiak is recognized as the local form of government for the community of Napakiak, Alaska, and

**WHEREAS**, the Kuskokwim River erosion and flooding have forced our community to retreat in the past, and although the rate and magnitude of future erosion and flooding cannot be fully known, there is no question these challenges are continuing and will likely accelerate.

**NOW THEREFORE BE IT RESOLVED**, that as a result, immediate action is needed to sustain our community. The City Council and Native Village of Napakiak therefore support and seek partner support for a two-part, master-planned response, driven by the realities of the changing river and under the premises that:

- The first phase is an immediate, systematic relocation of structures and infrastructure currently located east of the airstrip to the rear of the island, including the school and other buildings. This process will be guided by the subdivision plan now being completed.
- The second phase is to begin active planning for a possible, more extensive community relocation to the bluff above the current community. Decisions on the specific timing and steps of the community's retreat will respond to observed and projected changes in erosion and flood risks.
- The first phase relocation of buildings and infrastructure is a both a critical response to the near- term erosion issues, and necessary step towards the possible relocation to the bluff.

**PASSES and APPROVED** by a duly constituted quorum of the Napakiak City Council on the \_\_\_\_\_ of November, 2019.

Certified By:

ATTEST:

\_\_\_\_\_  
Mayor

\_\_\_\_\_  
City Clerk

# Next Steps (Based in Speed of Erosion and Requirement to Relocate the School – 1-2 years at most?)

1. Community Resolutions (Master Plan, funding applications) – **in progress**
2. Submit CDBG/ICDBG application **Nov 22, 2019** (ROAD TO FUTURE SCHOOL; EXCAVATION & DEWATERING OF LOCAL MATERIAL; IMPORT OF GRAVEL)
3. CAPSIS - State legislative appropriation **ASAP** or **AVCP/BIA-TPP** (HEAVY EQUIPMENT FOR ROAD CONST., ONGOING COMMUNITY USE)
4. LOWER KUSKOKWIM **SOON??** (EQUIPMENT TO FUTURE SCHOOL SITE FOR PILE INSTALLATION – overland after hard freeze, or barge and new road)
5. Submit FEMA grant application **Winter 2019-20** (FUNDING FOR HOUSE RELOCATIONS)
6. BIA Tribal Resilience Grant **Winter Spring 2020** (FLOOD AND EROSION STUDY PHASE 2 PROJECTED CHANGE) *Or FEMA-funded Risk Map? Or Silverjackets*
7. FEMA - JOHNSON SLOUGH BRIDGE – PLANNING & CONCEPT DESIGN, PERMITTING?
8. Outreach to elected officials **Winter Spring 2020 & Ongoing**