



FEMA

Ketchikan Gateway Borough Study

February 19, 2014

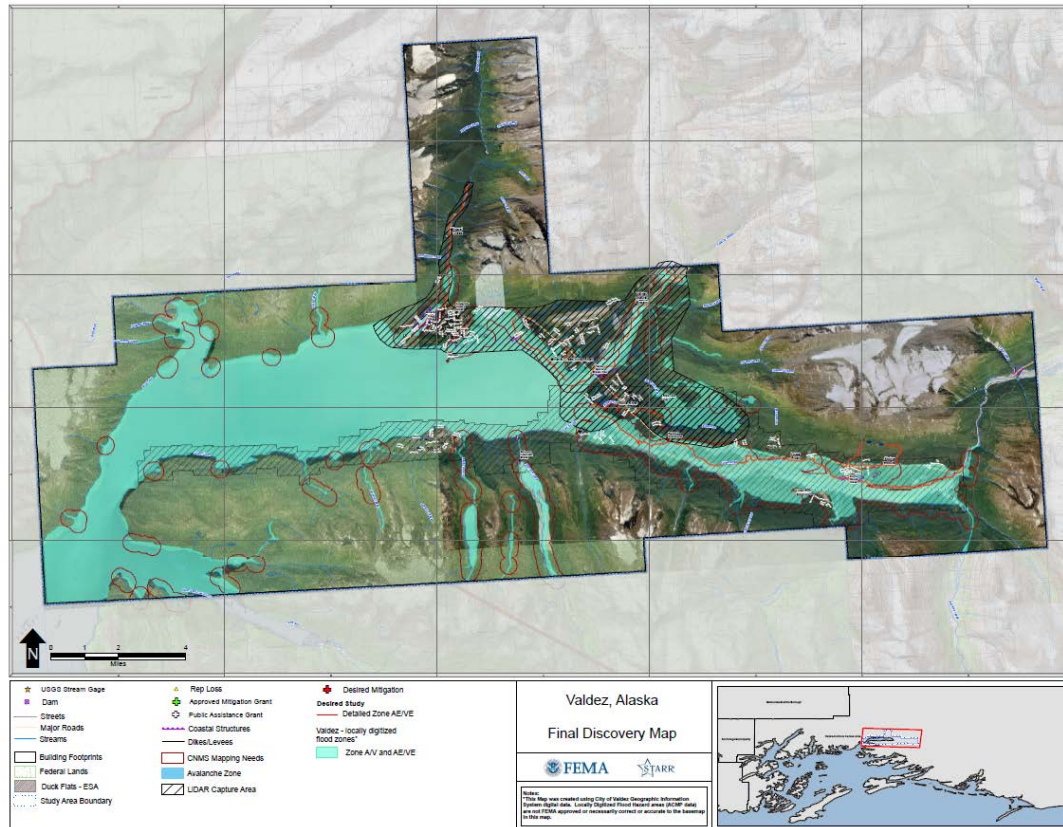
RiskMAP
Increasing Resilience Together



Today's Objective

- **Review finalized Study Scope**
- **Provide Overview of Risk Assessment Products**
- **Review Partnership Agreement**

Ketchikan Discovery



- Discovery Meetings held August 7, 2014
- Communities Identified Areas which required an updated study
- FEMA Discussed Risk Assessment Products
- Communities identified mitigation and training needs

Ketchikan LiDAR



Study Scope



Study Scope

- **Lidar and Aerial Imagery**
 - Collected late Spring/Early Summer

- **Coastal Study**
 - 34 miles of coastal analysis including 12 transects
 - Additional coastal areas will have a stillwater elevation

- **Updated Detailed Studies**
 - 0.99 miles of Hoadley Creek
 - 1.2 miles of Ketchikan Creek
 - 1 mile of Schoenbar Creek

- **Redelineation of Detailed Studies**
 - 0.08 mile of Carlanna Creek

Schedule Forward

- **Flood Study Review Meeting (Summer 2015)** – The input data, methodology, and draft flood maps will be presented to the communities
- **Preliminary Map Release (Summer 2015)**
- **Final CCO Meeting (Summer/Fall 2015)** – The preliminary flood insurance study is reviewed and discussed with community officials. A public meeting can then be held afterwards to present the maps to the public.
- **Resiliency Meeting (Fall 2015)** – The resiliency meeting reviews all of the risk assessment products and will focus on mitigation action



FEMA

Risk Assessment Products

RiskMAP
Increasing Resilience Together





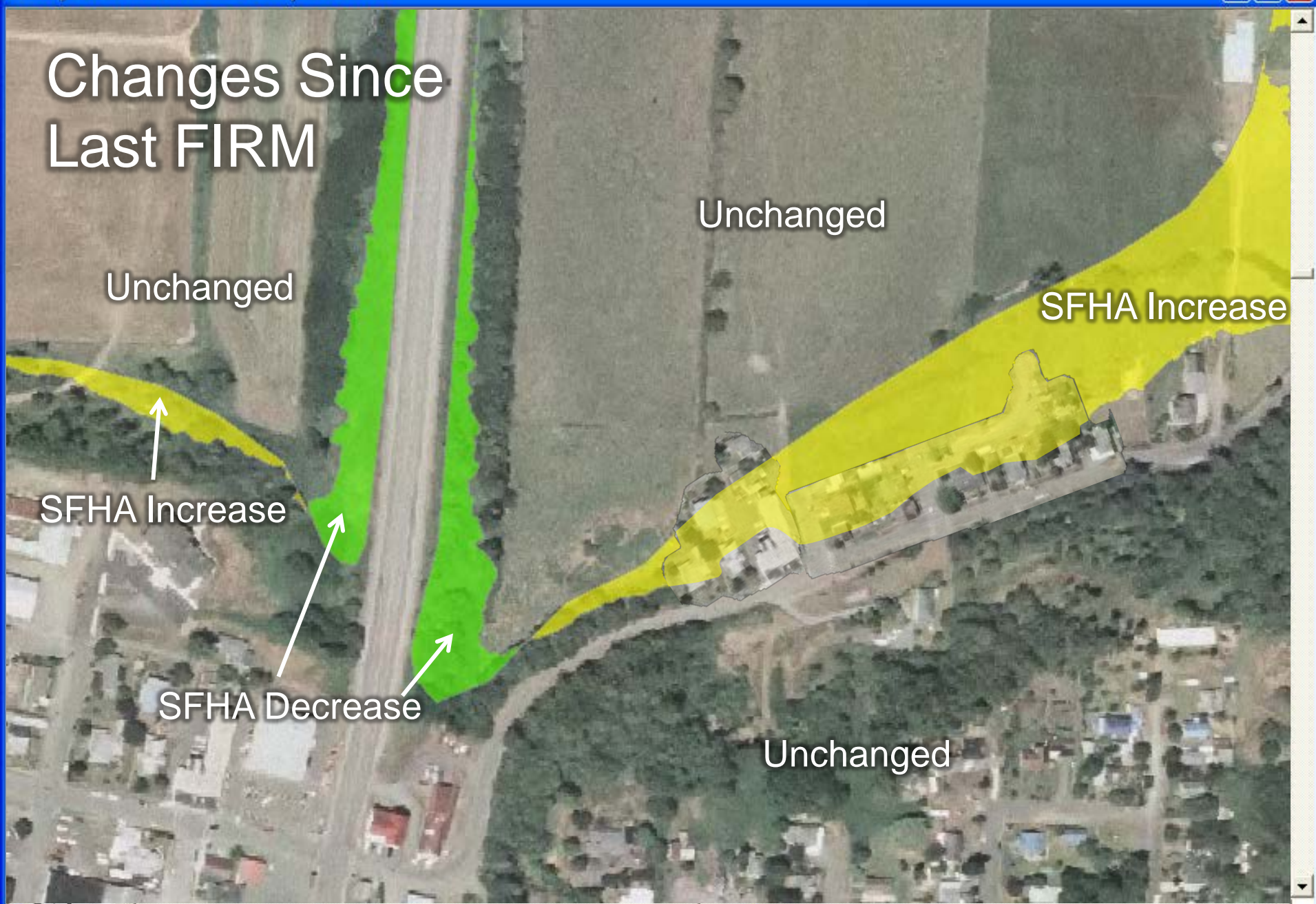
FEMA

Changes Since Last FIRM

RiskMAP
Increasing Resilience Together



Changes Since Last FIRM

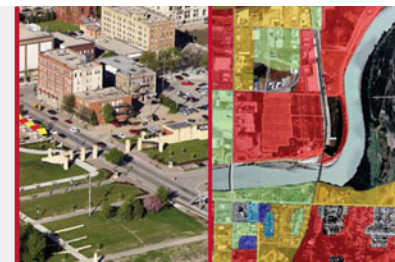




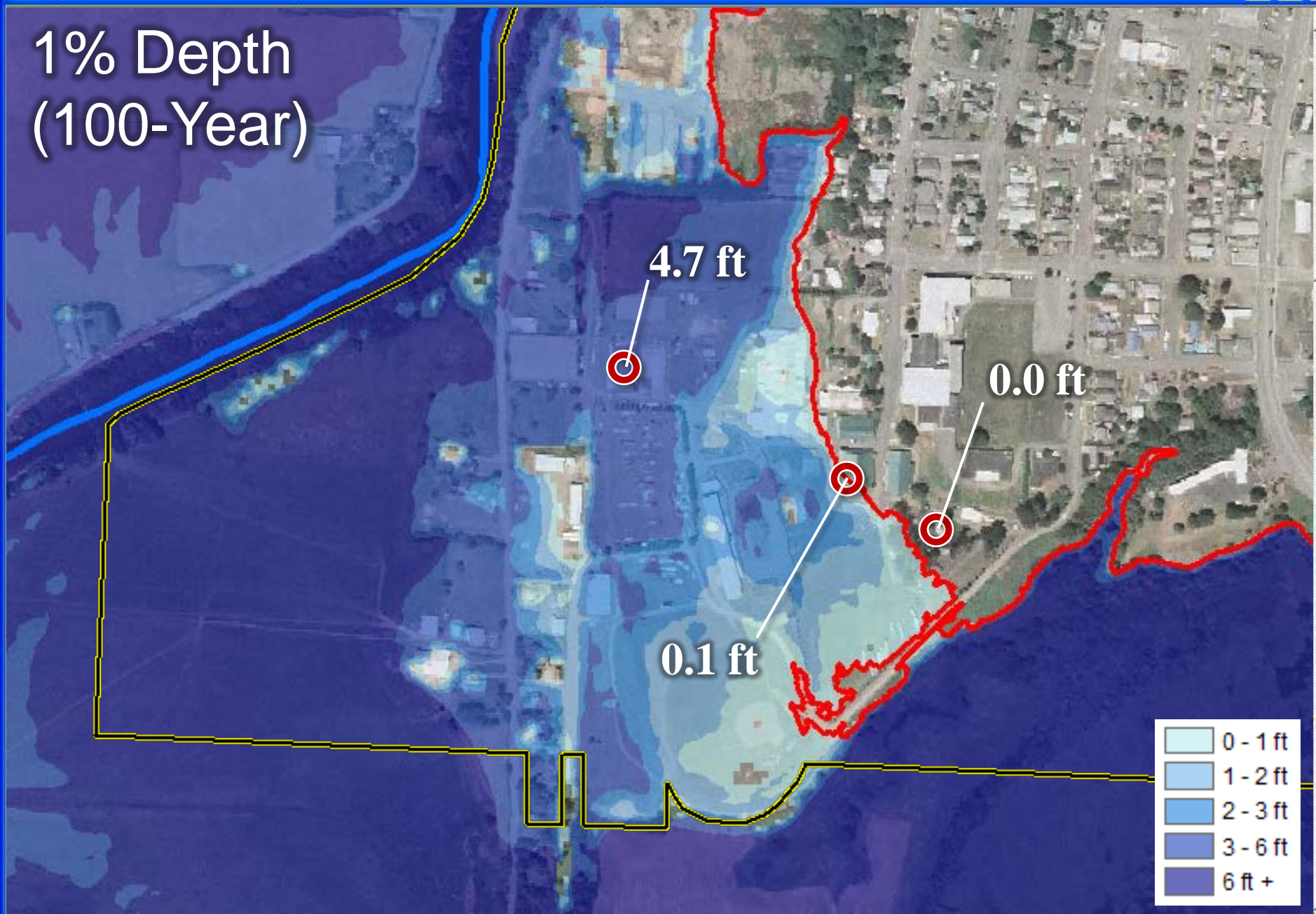
FEMA

Flood Depth Grids

RiskMAP
Increasing Resilience Together



1% Depth (100-Year)

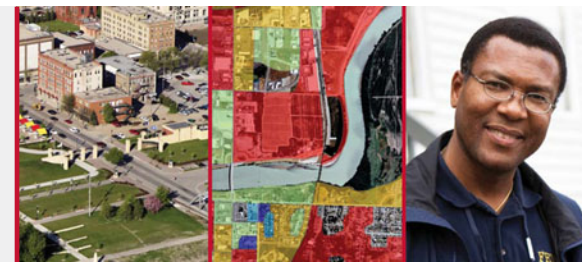




FEMA

Risk Report

RiskMAP
Increasing Resilience Together

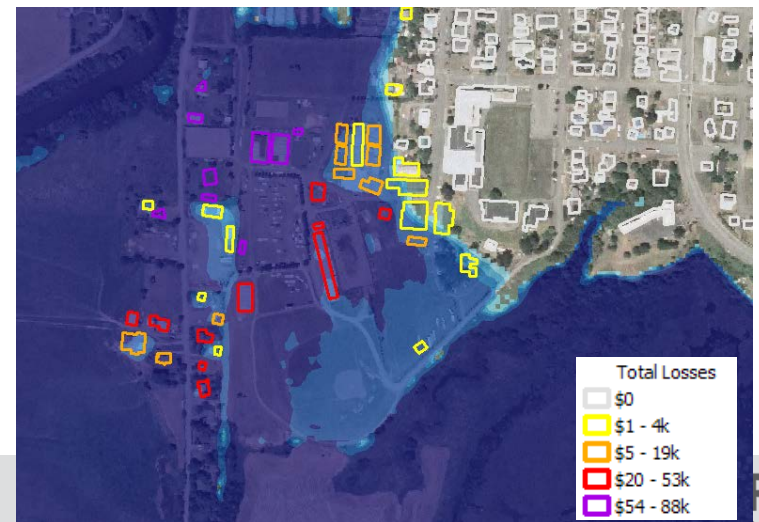
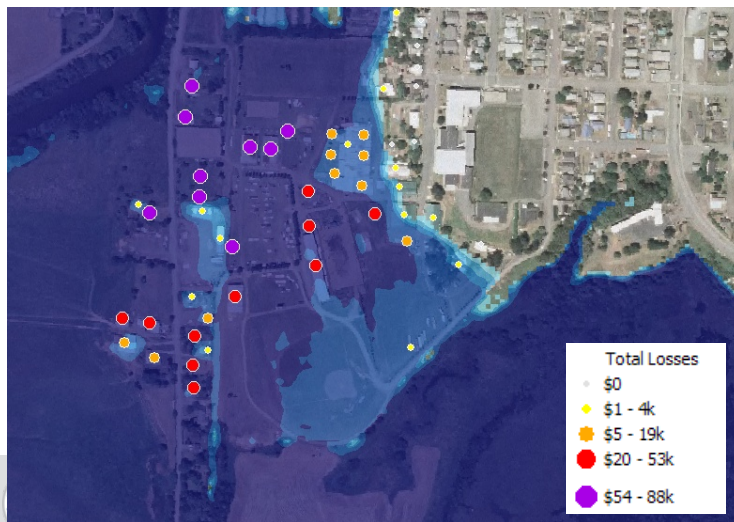


Purpose - Risk Report

- **Risk Assessments for flood, earthquake, and tsunami using Hazus**
- **Deliver Community and Project Level Results**
 - Project Results Summarized by:
 - Communities
- **Provide Information to Augment or Enhance Other Efforts**
 - Local Hazard Mitigation Planning
 - Local Emergency Management Planning
 - Local Master Planning and Building Development

Risk Assessment

- Risk assessments are completed using Hazus for earthquake and flood
- Will use local parcel/assessors data in assessment if available
- If data is available a building specific assessment may be completed





FEMA

Partnership Agreement

- Communication
- Products
- Signatures

RiskMAP
Increasing Resilience Together



Trainings

Available

- Overview of HAZUS Flood Loss Estimations
- Overview of HAZUS Earthquake Loss Estimations
- Preparing Data for HAZUS
- Overview of Hazard Mitigation Planning
- Letters of MAP Change
- Elevation Certificates
- Elevation Certificates in A Zones
- Regulating Development in Unnumbered A Zones
- Two-Year Preferred Risk Policy Eligibility Extension
- Why Hydrology Matters
- Post-Flood Recovery and Substantial Damage Assessments

In-Development

- Hazard Mitigation Planning “How to”
- Guide for collecting high water marks
- Floodplain Manager/CFM refresher course
- Inspecting developments in the SFHA
- Overview of FEMA Grants
- What is Risk MAP?
- How communities can promote flood risk awareness (community engagement strategies)
- Public Damage Assessments (PDAs)
- Community Rating System (CRS)

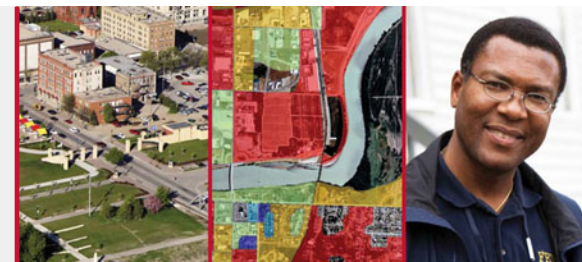


FEMA

Questions/Suggestions??

- Additional Enhanced data sets?
- Trainings?

RiskMAP
Increasing Resilience Together



Questions & Comments

FEMA Contacts

Flood Study Engineer:	Ted Perkins	(425) 487-4684
Risk Analyst/ GIS Specialist:	Kelly Stone	(425) 487-4636
Mitigation Planner:	Kristen Meyers	(425) 487-4543
NFIP Insurance Specialist:	Deb Farmer	(425) 487-2023
Floodplain Management Spec.:	Karen Wood-McGuinness	(425) 487-4675

State Contacts

Alaska RiskMAP Coordinator 4588	Sally Cox	(907) 269-
Alaska NFIP Specialist	Taunnie Boothby	(907) 269-4583
Alaska Hazard Mitigation Officer	Ann Gravier	(907) 425-7045