

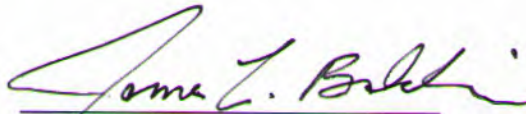
**LOCAL BOUNDARY COMMISSION  
STATE OF ALASKA**

IN THE MATTER OF THE CONSOLIDATED )  
LEGISLATIVE REVIEW PETITIONS OF )  
THE CITY OF DILLINGHAM FOR )  
ANNEXATION OF NUSHAGAK )  
COMMERCIAL SALMON DISTRICT WATERS )  
AND WOOD RIVER SOCKEYE SALMON )  
HARVEST AREA WATERS, TOGETHER )  
CONSISTING OF APPROXIMATELY 396 )  
SQUARE MILES OF WATER AND 3 )  
SQUARE MILES OF LAND )  
AND )  
OF THE CITY OF MANOKOTAK TO ANNEX )  
THE WEARY/SNAKE RIVER TRACT, THE )  
SNAKERIVER SECTION AND IGUSHIK )  
SECTION OF THE NUSHAGAK COMMERCIAL )  
SALMON DISTRICT, AND THE IGUSHIK )  
VILLAGE TRACT,ALTOGETHER CONSISTING )  
OF APPROXIMATELY 37 SQUARE MILES OF )  
LAND AND 118 SQUARE MILES OF WATER )

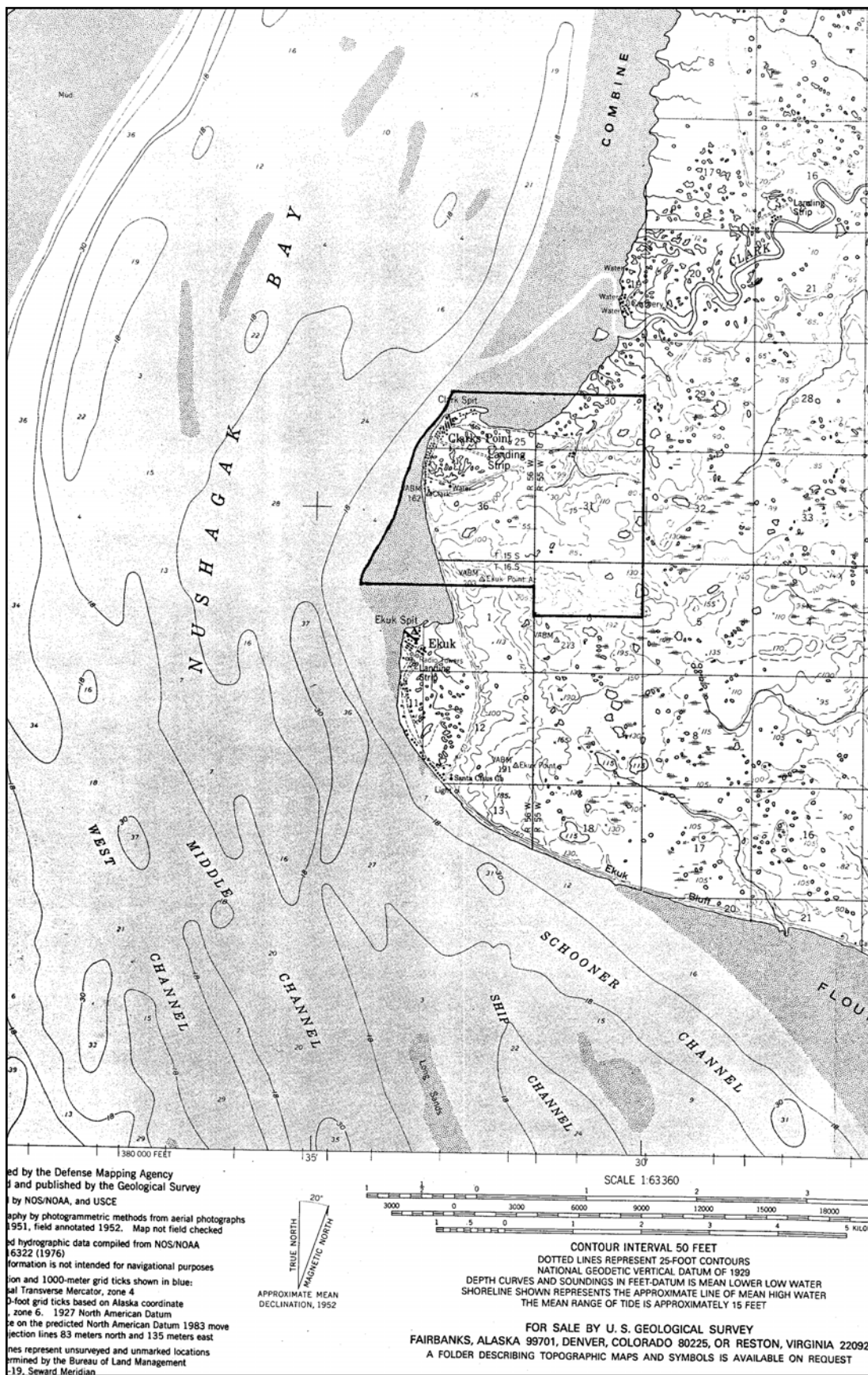
**Eastside Respondents Hearing Exhibits**

In compliance with instructions received from staff of the Local Boundary Commission attached are the hearing exhibits that respondents Native Village of Ekuk, Native Village of Clark's Point, Native Village of Portage Creek, and City of Clark's Point may use during the formal hearing in the above-captioned matter.

DATED November 23, 2016



James L. Baldwin  
Counsel for Eastside Respondents

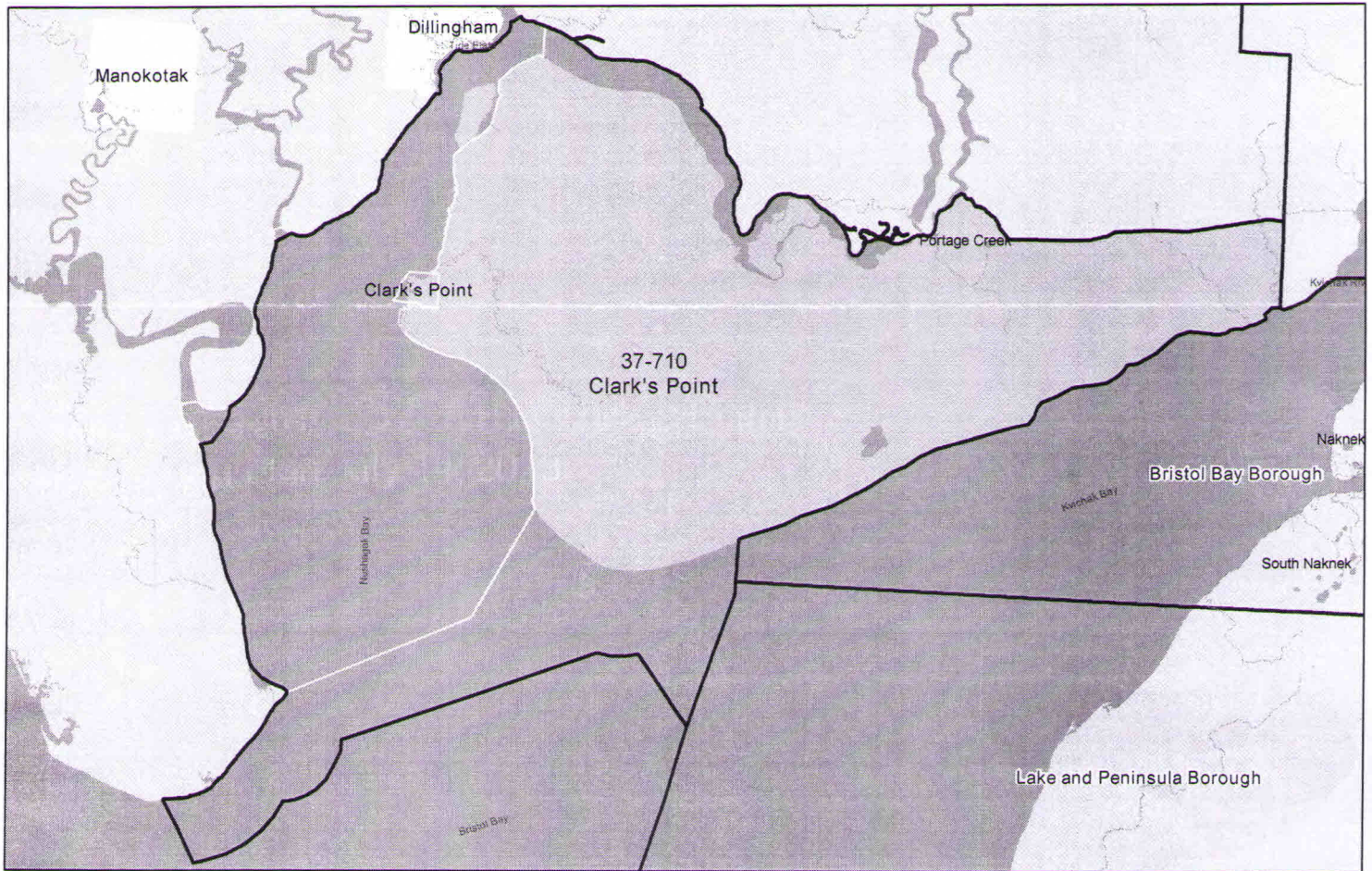






# Voting Precinct 37-710 Clark's Point

## Redistricting Plan July 14, 2013



































































































E-27











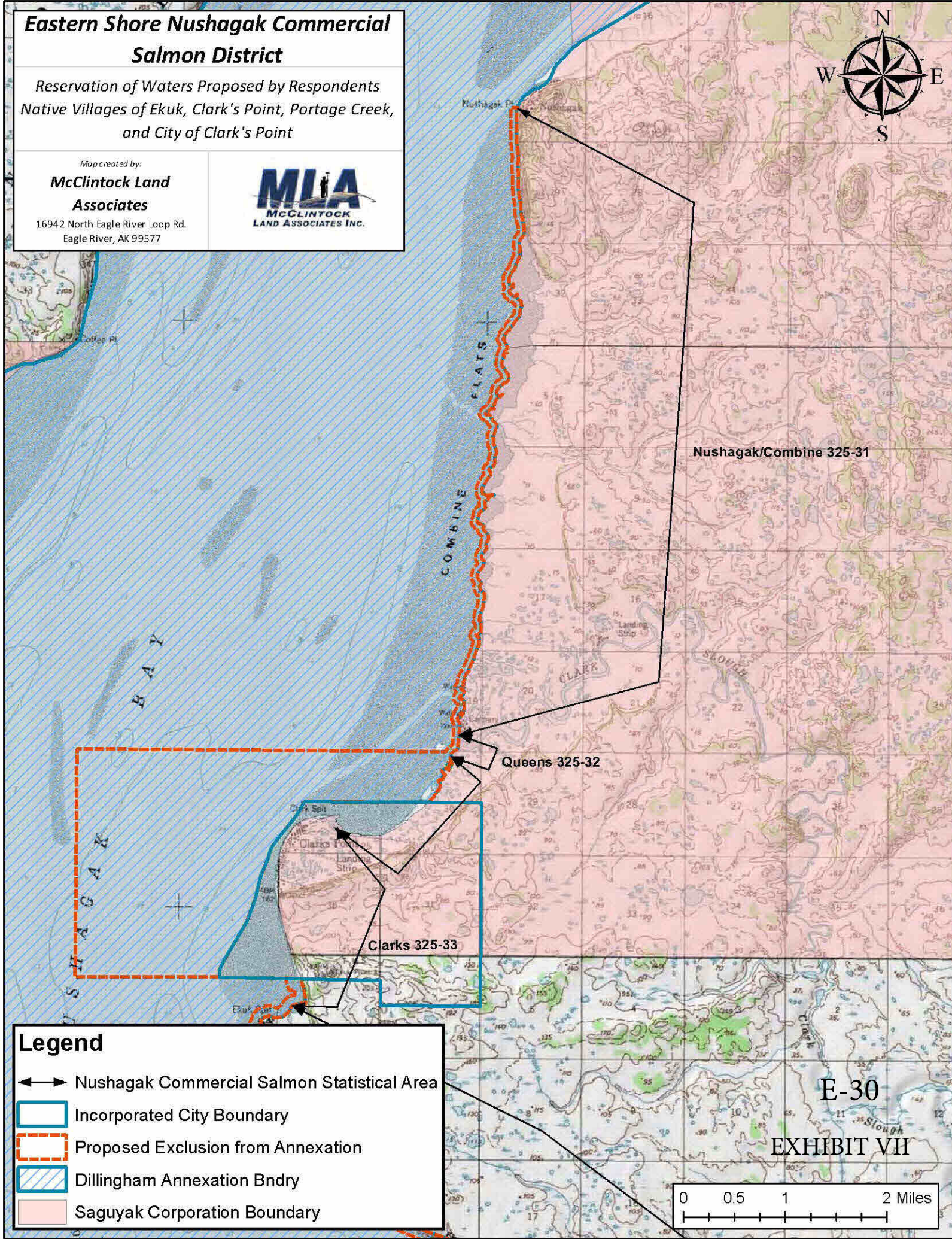
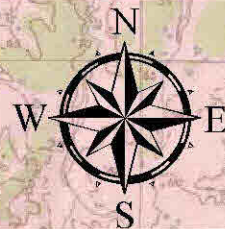
# Eastern Shore Nushagak Commercial Salmon District

Reservation of Waters Proposed by Respondents  
Native Villages of Ekuk, Clark's Point, Portage Creek,  
and City of Clark's Point

Map created by:

**McClintock Land  
Associates**

16942 North Eagle River Loop Rd.  
Eagle River, AK 99577

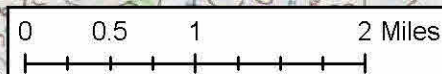


## Legend

- ↔ Nushagak Commercial Salmon Statistical Area
- ▭ Incorporated City Boundary
- - - Proposed Exclusion from Annexation
- ▨ Dillingham Annexation Bndry
- ▭ Saguyak Corporation Boundary

E-30

EXHIBIT VII







## Tract B

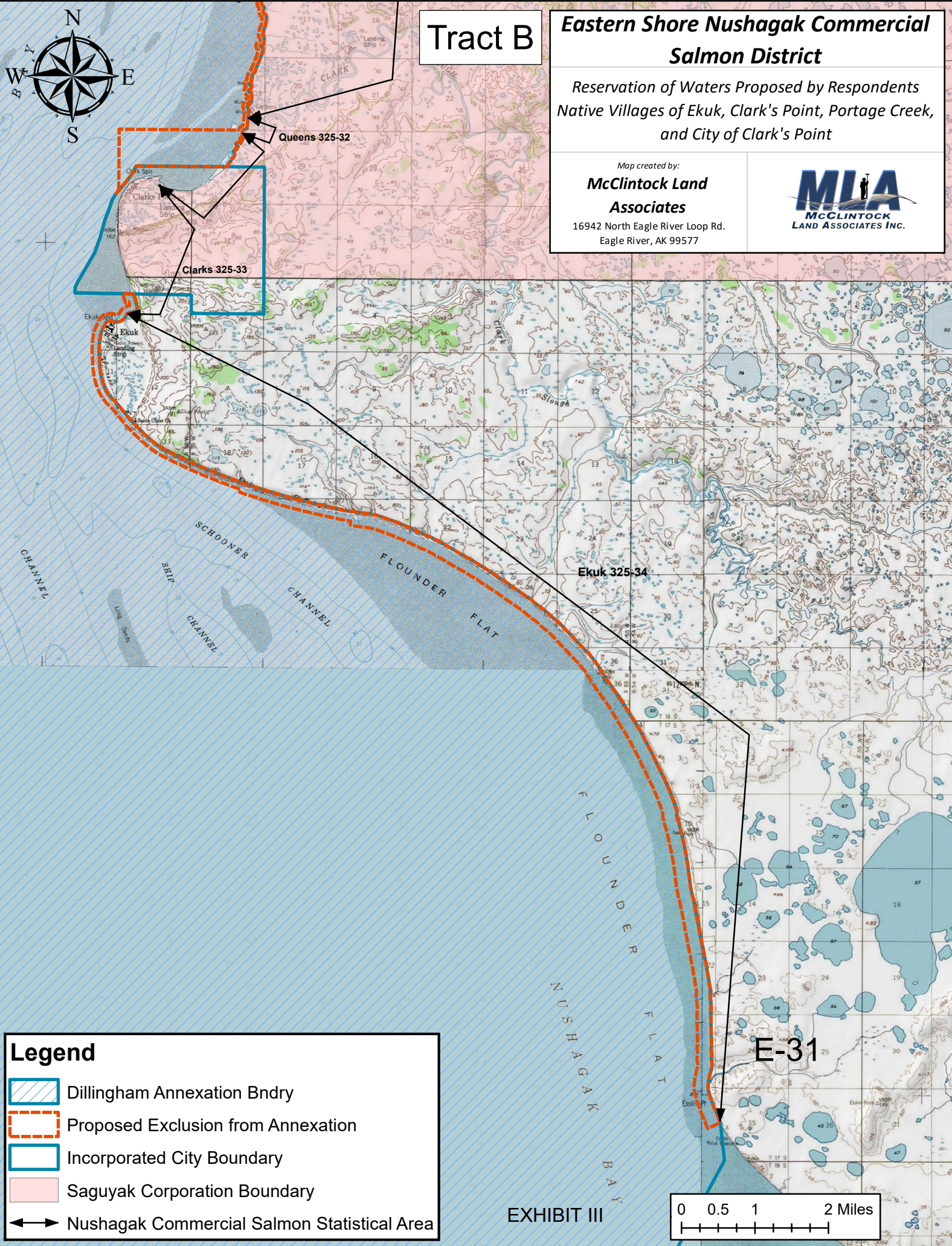
### Eastern Shore Nushagak Commercial Salmon District

Reservation of Waters Proposed by Respondents  
Native Villages of Ekuk, Clark's Point, Portage Creek,  
and City of Clark's Point

Map created by:

**McClintock Land  
Associates**

16942 North Eagle River Loop Rd.  
Eagle River, AK 99577



### Legend





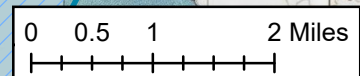
-  Dillingham Annexation Bndry
-  Proposed Exclusion from Annexation
-  Incorporated City Boundary
-  Saguyak Corporation Boundary
-  Nushagak Commercial Salmon Statistical Area

EXHIBIT III





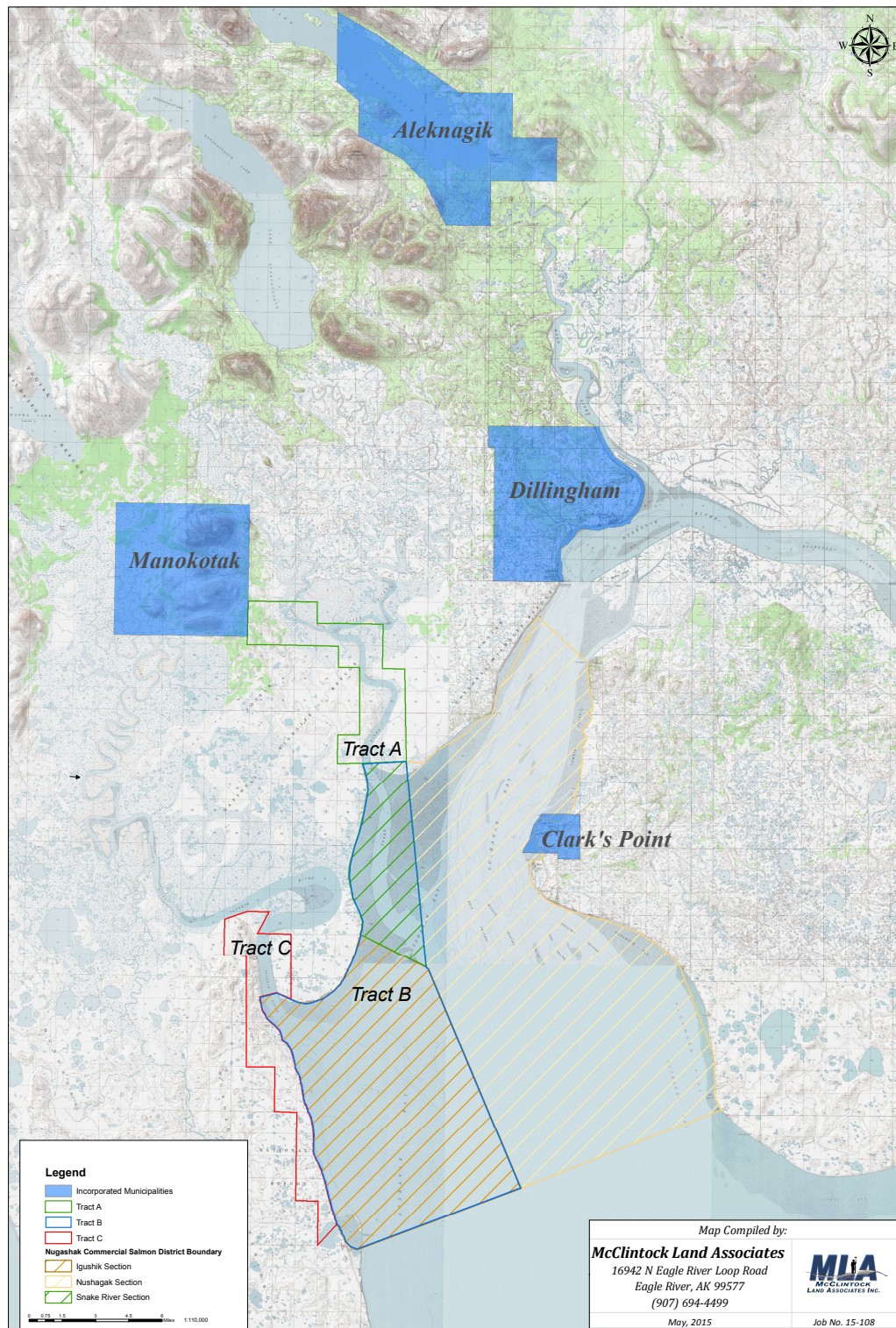
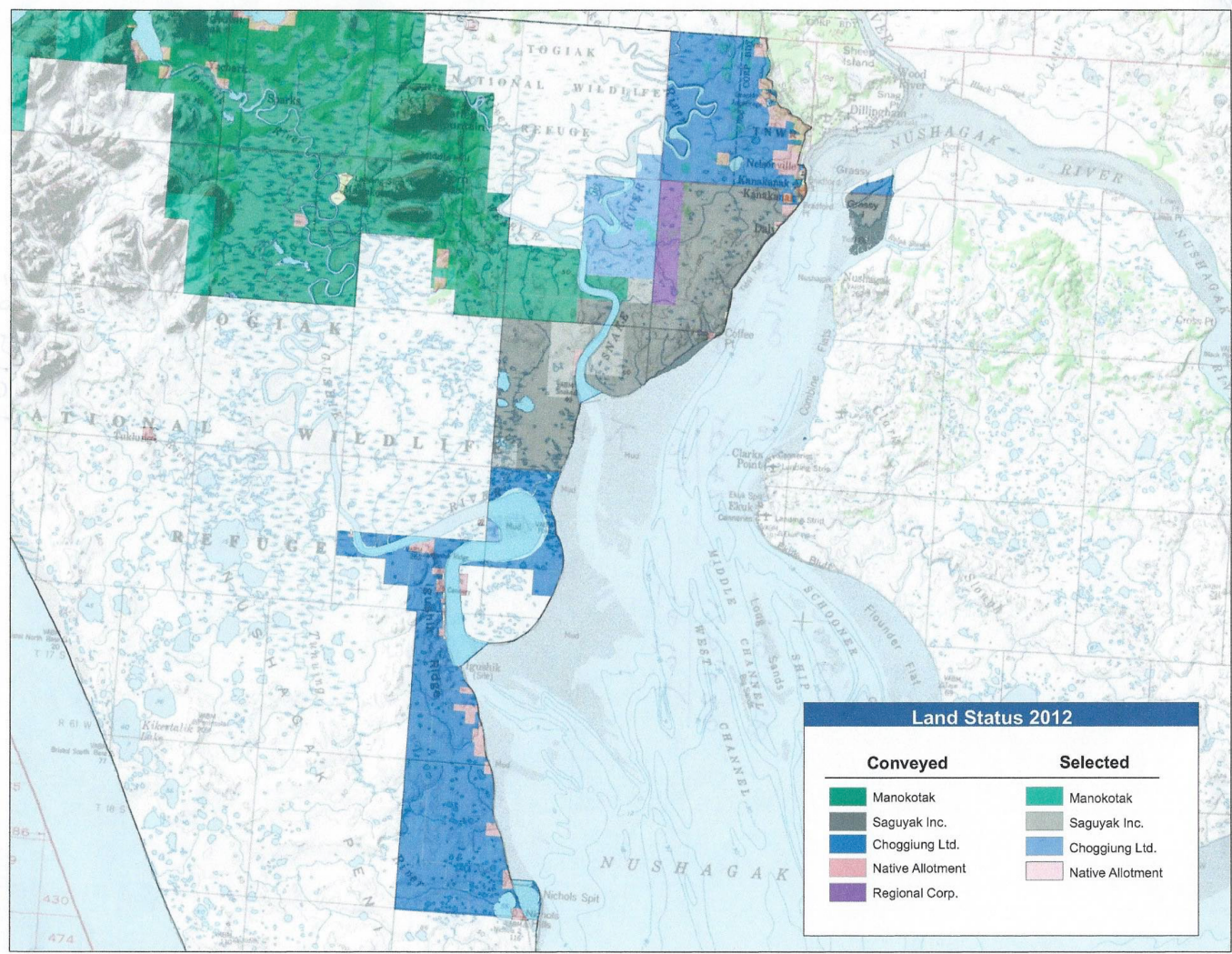
**Exhibit A-4.1. City of Manokotak and Territory Proposed for Annexation**



Figure 6. Land Status, City of Manokotak and Proposed Annexation Territory

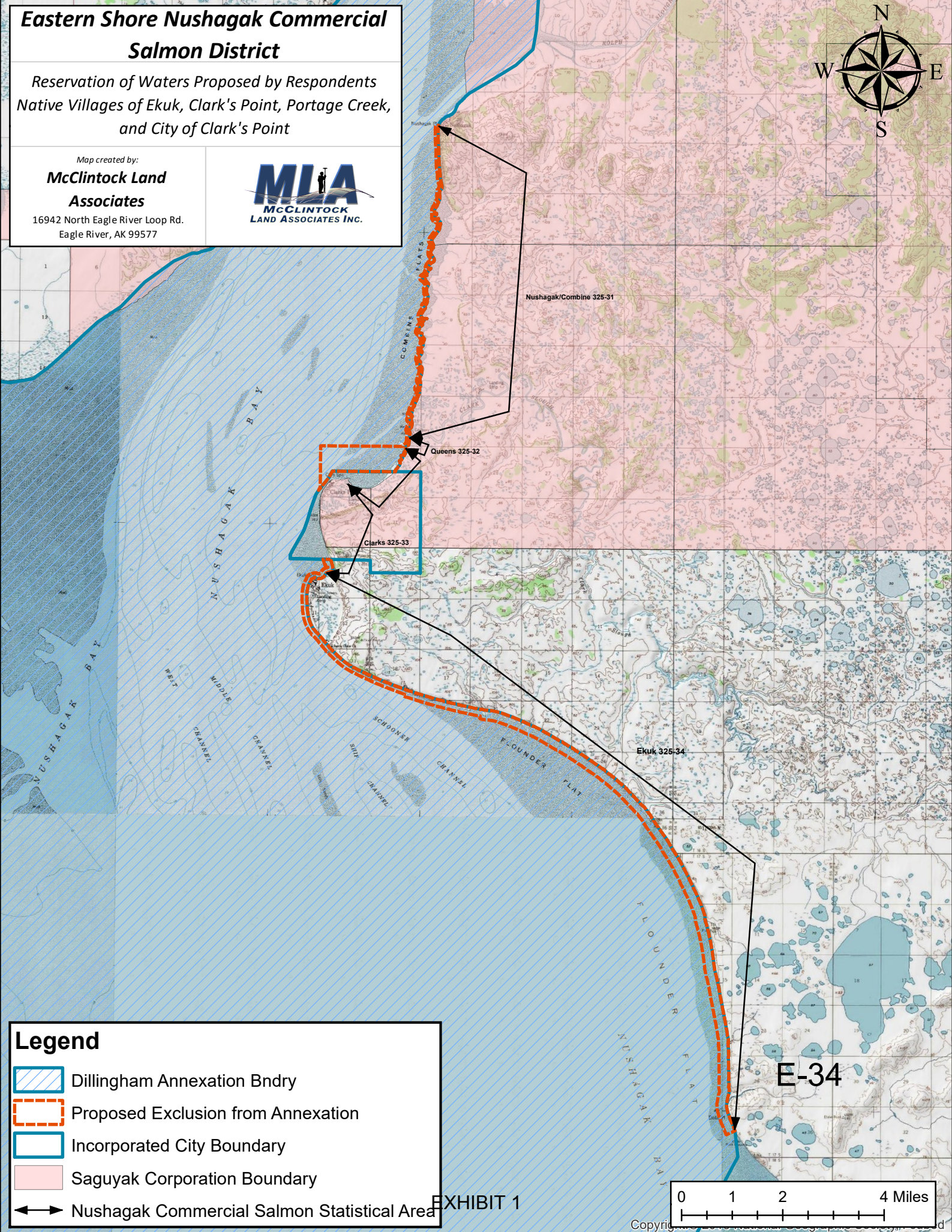




**Eastern Shore Nushagak Commercial  
Salmon District**

*Reservation of Waters Proposed by Respondents  
Native Villages of Ekuk, Clark's Point, Portage Creek,  
and City of Clark's Point*

Map created by:  
**McClintock Land  
Associates**  
16942 North Eagle River Loop Rd.  
Eagle River, AK 99577



**Legend**

- Dillingham Annexation Bndry
- Proposed Exclusion from Annexation
- Incorporated City Boundary
- Saguyak Corporation Boundary
- Nushagak Commercial Salmon Statistical Area

EXHIBIT 1

E-34

