

CAPE NOME

Serial No. 70-902

BOOK 258 PAGE 335

Cape Nome Recording District

RECORDED - [Stamp]

Cape Nome REC. DIST.

DATE 11-9 1970

TIME 9:45 A.M.

Requested: Local Affairs Agency

Address: Pouch AB

Juneau, Alaska 99801

W. W. [Signature]

STATE OF ALASKA
Lieutenant Governor
JUNEAU

RECEIVED
NOV 27 1970

LOCAL AFFAIRS AGENCY

CERTIFICATE

I, ROBERT W. WARD, LIEUTENANT GOVERNOR OF THE STATE OF ALASKA, DO HEREBY CERTIFY THAT, in accordance with the provisions of AS 29.10.022, an election for the incorporation of a fourth class city known as Elim, Alaska, was held on October 6, 1970, within the boundaries of said proposed area for incorporation and that a majority of votes were cast for incorporation. The vote was 41 for and 13 against.

AND THAT a majority of the votes were cast for enactment of a 2% sales tax. The vote was 40 for and 14 against.

I DO FURTHER CERTIFY THAT the city of Elim is incorporated as a fourth class city;

THAT it possesses all the powers and privileges prescribed for cities of the fourth class by Title 29 of the ALASKA STATUTES:

THAT the boundaries of the said city are:

Beginning at the point where the North boundary of Section 14, T10S, R18W, projected, Kateel River Meridian, Alaska, intersects the mean high water line of Norton Bay; thence West to the NW corner of Section 16, T10S, R18W; thence South to the NE corner of Section 20, T10S, R18W; thence West to the NW corner of the NE 1/4 of Section 20, T10S, R18W; thence South along the 1/4 section line to the point where this line intersects the mean high water line of Norton Bay; thence in easterly and northerly direction along the mean high water line of Norton Bay to the point of beginning, containing 3.0 square miles, more or less.

AND THAT on October 6, 1970, the following were elected as councilmen on the initial city council:

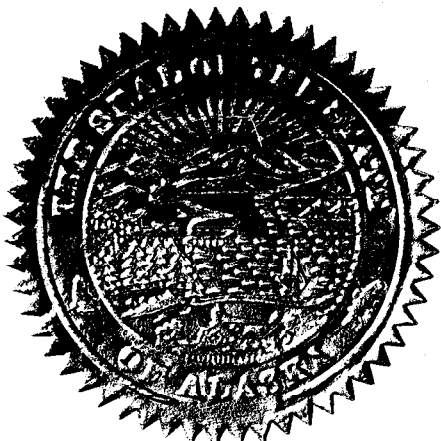
- Daniels, Harry L.
- Jamewouk, Hans
- Nagaruk, Luther
- Nylin, Ernest
- Saccheus, David E.

AND THAT the term of this office is to be one year unless determined otherwise by the city council.

IN TESTIMONY WHEREOF, I have hereunto set my hand and affixed hereto the Seal of the State of Alaska, at Juneau, the Capital,

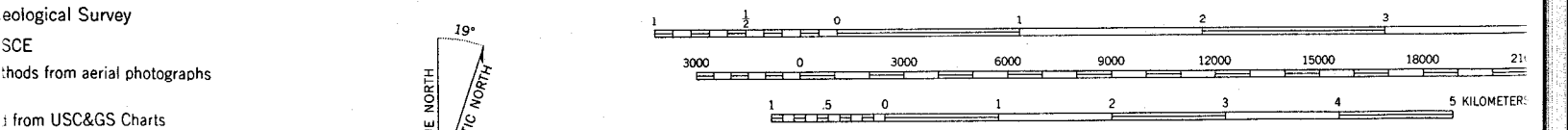
This 19th day of October, A.D. 1970.

[Signature]
ROBERT W. WARD
Lieutenant Governor





0 FEET | 20' | SCALE 1:63360



CONTOUR INTERVAL 50 FEET
 DASHED LINES REPRESENT 25-FOOT CONTOURS
 NATIONAL GEODETIC VERTICAL DATUM OF 1929
 DEPTH CURVES AND SOUNDINGS IN FEET—DATUM IS MEAN LOWER LOW WATER
 SHORELINE SHOWN REPRESENTS THE APPROXIMATE LINE OF MEAN HIGH WATER
 THE AVERAGE RANGE OF TIDE IS APPROXIMATELY 2 FEET

FOR SALE BY U. S. GEOLOGICAL SURVEY
FAIRBANKS, ALASKA 99701, DENVER, COLORADO 80225, OR RESTON, VIRGINIA 22092
 A FOLDER DESCRIBING TOPOGRAPHIC MAPS AND SYMBOLS IS AVAILABLE ON REQUEST

ce
 eological Survey
 SCE
 hods from aerial photographs
 from USC&GS Charts
 navigational purposes
 tion: 1927 North American datum
 ordinate system, zone 7
 arcator grid ticks,
 unmarked locations
 d Management
 eridian
 n the boundaries of
 wn on this map

Swamps, as portrayed, indicate only the wetter areas, usually of low relief, as interpreted from aerial photographs

