



**Figure 1**  
**Newtok Airport Relocation**  
**Material Site Access Road**

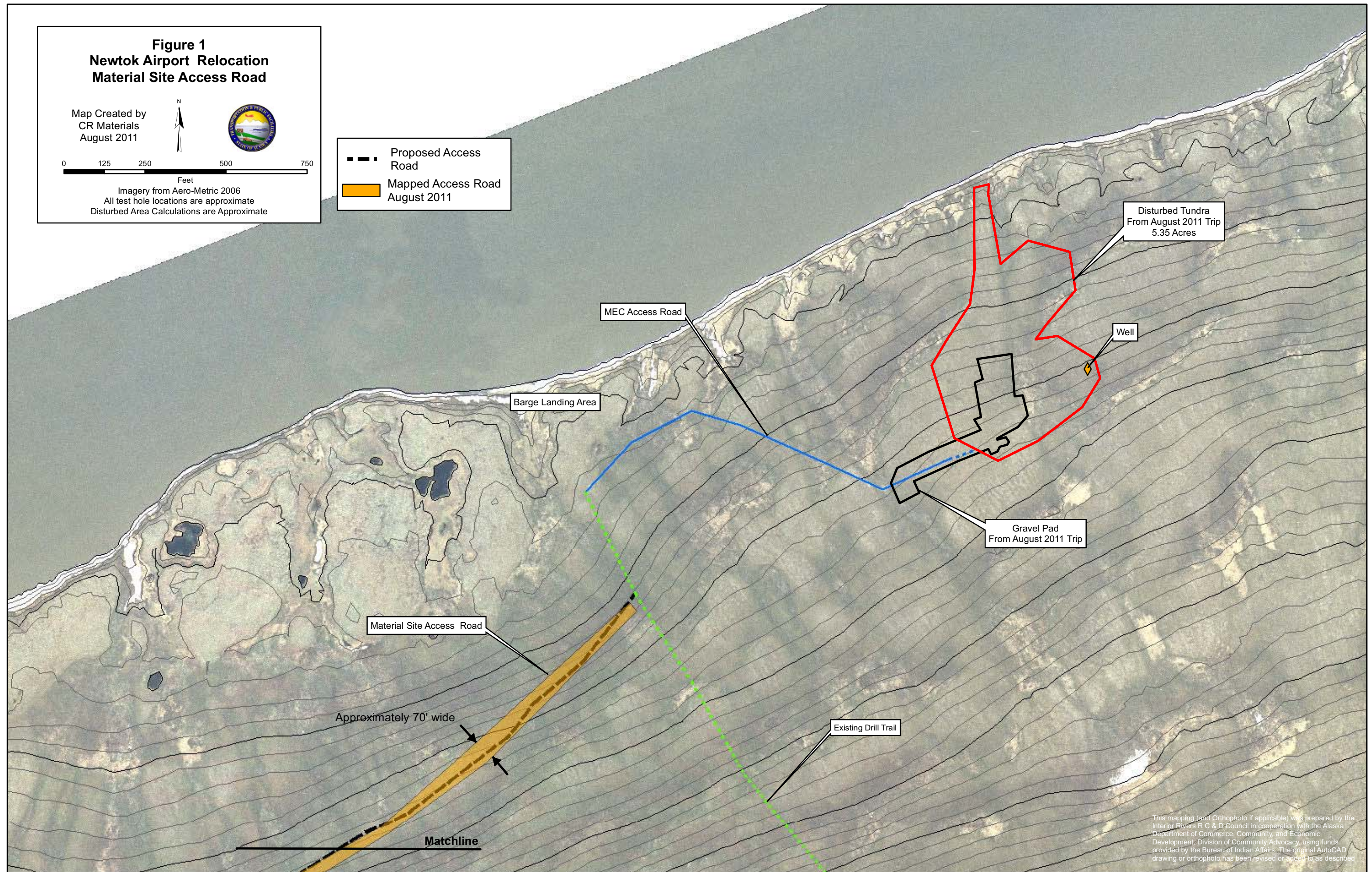
Map Created by  
CR Materials  
August 2011



0 125 250 500 750  
Feet

Imagery from Aero-Metric 2006  
All test hole locations are approximate  
Disturbed Area Calculations are Approximate

- Proposed Access Road
- Mapped Access Road August 2011



This mapping (and Orthophoto if applicable) was prepared by the Interior Rivers R C & D Council in cooperation with the Alaska Department of Commerce, Community, and Economic Development, Division of Community Advocacy, using funds provided by the Bureau of Indian Affairs. The original AutoCAD drawing or orthophoto has been revised or added to as described.



**Figure 2**  
**Newtok Airport Relocation**  
**Material Site Access Road**

Map Created by  
CR Materials  
August 2011



0 125 250 500 750

Feet

Imagery from Aero-Metric 2006  
All test hole locations are approximate  
Disturbed Area Calculations are Approximate

- Proposed Access Road
- Mapped Access Road August 2011

Material Site Access Road

Approximately 50' wide

Matchline

Well

Water Well Service Road

Matchline

This mapping (and Orthophoto if applicable) was prepared by the Interior Rivers R C & D Council in cooperation with the Alaska Department of Commerce, Community, and Economic Development, Division of Community Advocacy, using funds provided by the Bureau of Indian Affairs. The original AutoCAD drawing or orthophoto has been revised or added to as described.



**Figure 3**  
**Newtok Airport Relocation**  
**Material Site Access Road**

Map Created by  
CR Materials  
August 2011



0 125 250 500 750  
Feet

Imagery from Aero-Metric 2006  
All test hole locations are approximate  
Disturbed Area Calculations are Approximate

--- Proposed Access Road  
Mapped Access Road August 2011

Material Site Access Road

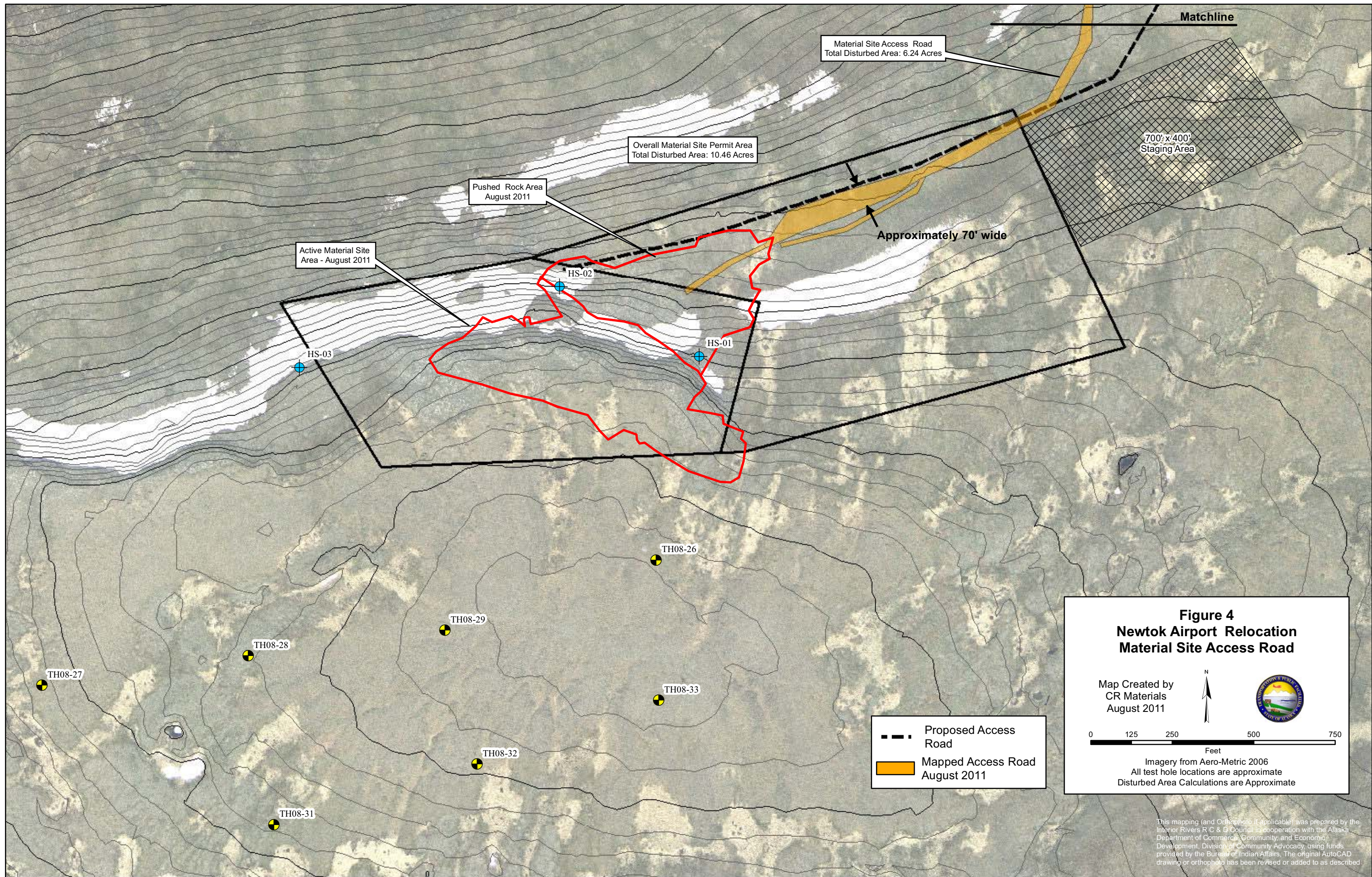
Matchline

Matchline

Material Site Access Road  
Total Disturbed Area: 6.24 Acres

This mapping (and Orthophoto if applicable) was prepared by the Interior Rivers R.C. & D. Council in cooperation with the Alaska Department of Commerce, Community, and Economic Development, Division of Community Advocacy, using funds provided by the Bureau of Indian Affairs. The original AutoCAD drawing or orthophoto has been revised or added to as described.





**Figure 4**  
**Newtok Airport Relocation**  
**Material Site Access Road**

Map Created by  
CR Materials  
August 2011

0 125 250 500 750  
Feet

Imagery from Aero-Metric 2006  
All test hole locations are approximate  
Disturbed Area Calculations are Approximate

This mapping (and Orthophoto if applicable) was prepared by the Interior Rivers R & D Council in cooperation with the Alaska Department of Commerce, Community, and Economic Development, Division of Community Advocacy, using funds provided by the Bureau of Indian Affairs. The original AutoCAD drawing or orthophoto has been revised or added to as described.