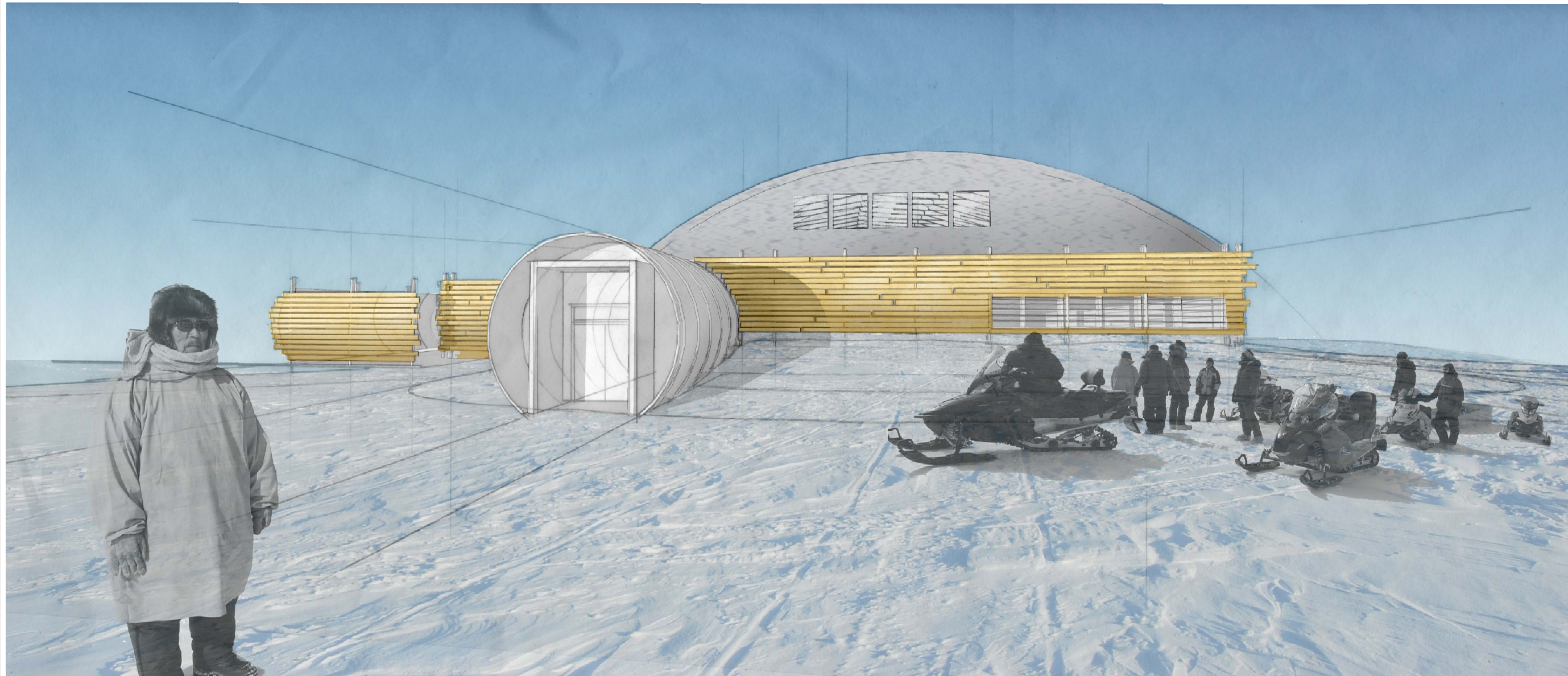


MERTARVIK EVACUATION CENTER



DRAWING INDEX

PAGE 1 C1.0 SITE PLAN
 PAGE 2 A1.0 FOUNDATION PLAN
 PAGE 3 A1.1 LOWER LEVEL FLOOR PLAN
 PAGE 4 A1.2 MAIN LEVEL FRAMING PLAN

PAGE 5 A1.3 MAIN LEVEL FLOOR PLAN
 PAGE 6 A1.4 MEZZANINE FRAMING PLAN
 PAGE 7 A1.5 MEZZANINE FLOOR PLAN
 PAGE 8 A1.6 ROOF PLAN

PAGE 9 A2.1 ELEVATIONS- NORTH/SOUTH
 PAGE 10 A2.2 ELEVATIONS- EAST/WEST
 PAGE 11 A3.1 SECTIONS

General Notes

DESIGNED BY: AC
 DRAWN BY: AC, JG, KS

No.	Rev./Issue	Date

COLD CLIMATE HOUSING RESEARCH CENTER
 1000 FAIRBANKS STREET
 P.O. BOX 82489
 FAIRBANKS, AK 99708-2489
 (907) 457-3454
 www.cchrc.org

CCHRC

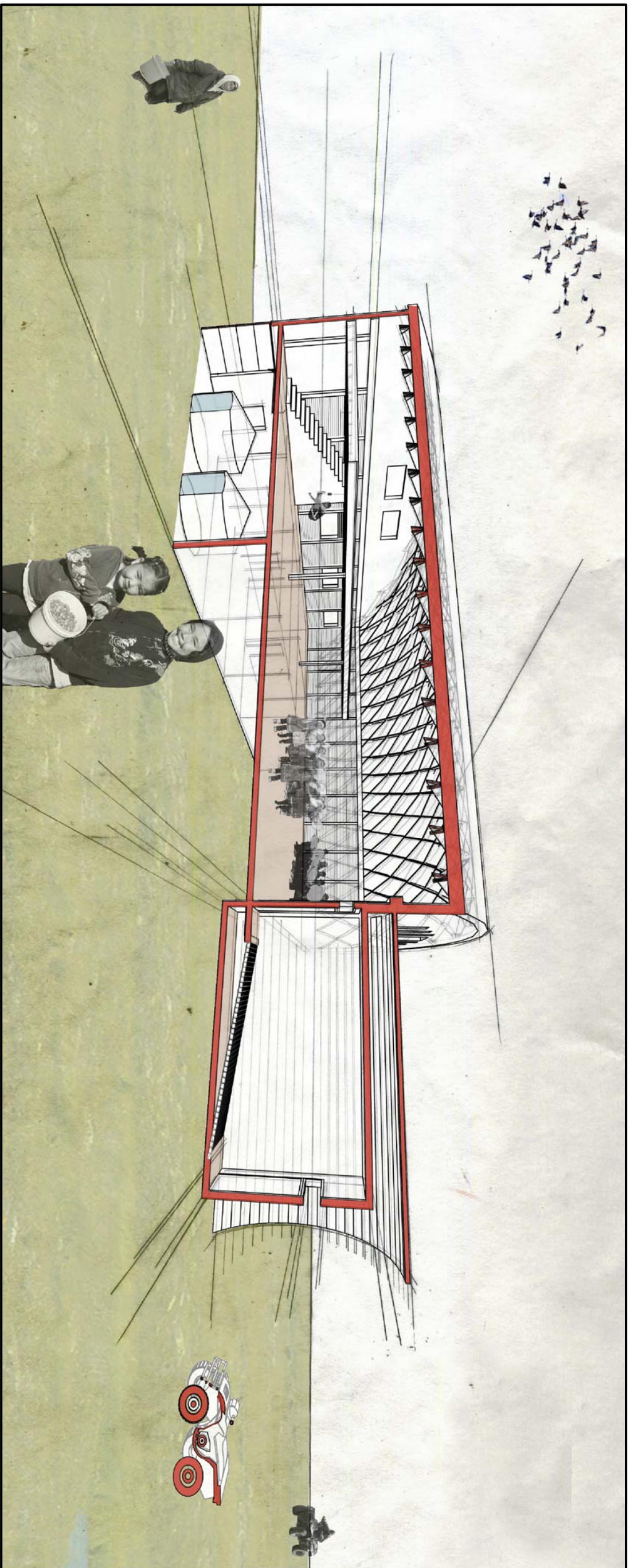


PROJECT
**MERTARVIK
 EVACUATION CENTER**
 FOR THE COMMUNITY OF NEWTOK
 MERTARVIK, ALASKA
 DRAWN
 9 OCTOBER 2009
 DESIGN DEVELOPMENT PROGRESS SET

WINTER
 RENDERING

A0.1

MERTARVIK EVACUATION CENTER



General Notes

DESIGNED BY:	AC
DRAWN BY:	AC, JG, KS
No.	Rev./Issue
Date	

COLD CLIMATE HOUSING RESEARCH CENTER

CCHRC

1000 FAIRBANKS STREET
P.O. BOX 82489
FAIRBANKS, AK 99708-2489
(907) 457-3454
www.cchrc.org



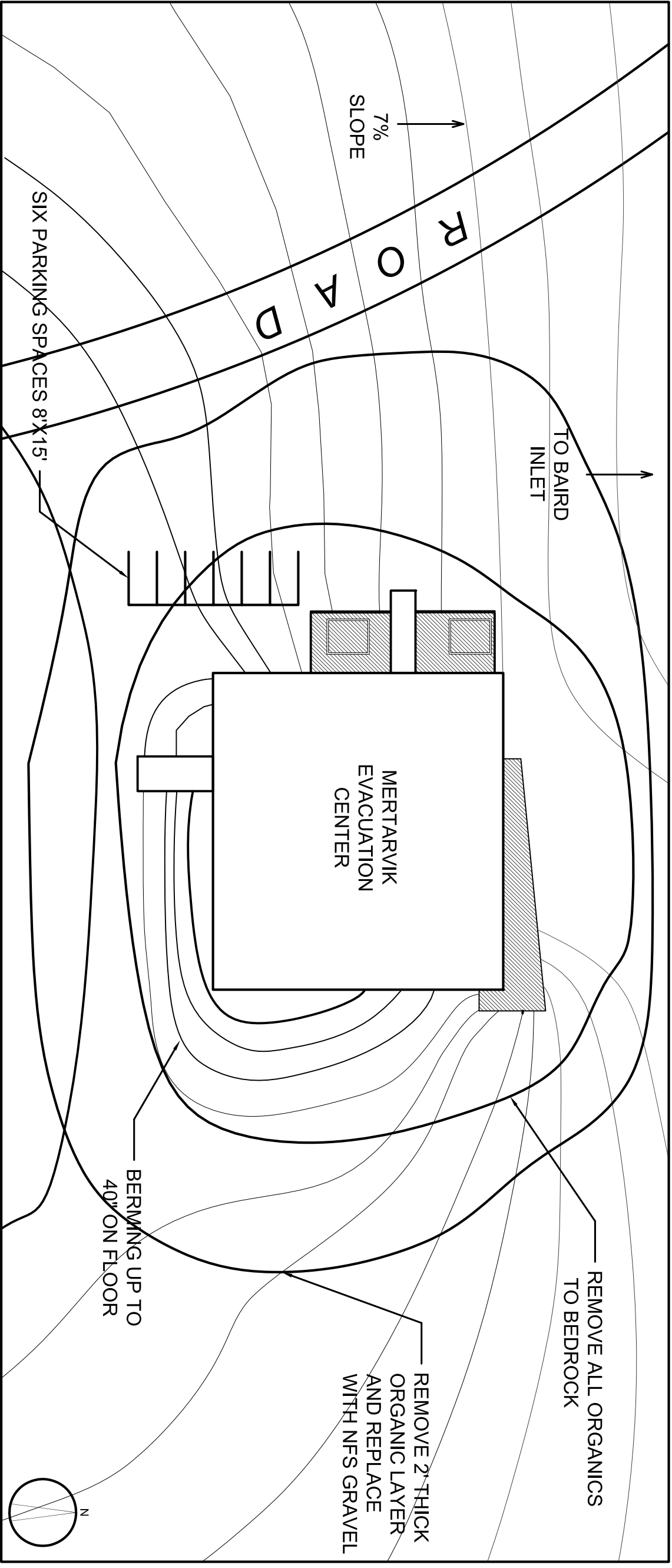
PROJECT
**MERTARVIK
EVACUATION CENTER**
FOR THE COMMUNITY OF NEWTOK
MERTARVIK, ALASKA
ISSUED
9 OCTOBER 2009
DESIGN DEVELOPMENT PROGRESS SET

SECTIONAL
PROSPECTIVE
RENDERING

A0.2

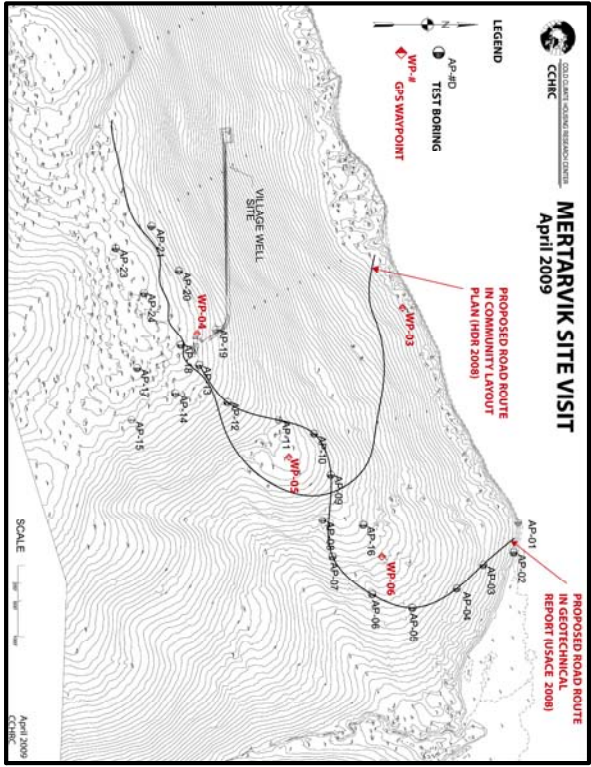
SHEET 0 OF 11

NOT FOR CONSTRUCTION



1 SITE PLAN

SCALE: 1"=1/32'



SITING HAS NOT BEEN DETERMINED. THE DESIGN TEAM RECOMMENDS AN ARRAY OF BORINGS TO ENSURE PROPER SITE CONDITIONS. SET AT 20' INTERVALS. SEE SECTIONS 6-9 OF DAR FOR DETAILED INFORMATION ON RECOMMENDED LOCATION FOR ARRAY

General Notes

DESIGNED BY:	AC	
DRAWN BY:	AC, JG, KS	
No.	Rev./Issue	Date

1000 FAIRBANKS STREET
P.O. BOX 82489
FAIRBANKS, AK 99708-2489
(907) 457-3454
www.cchrc.org

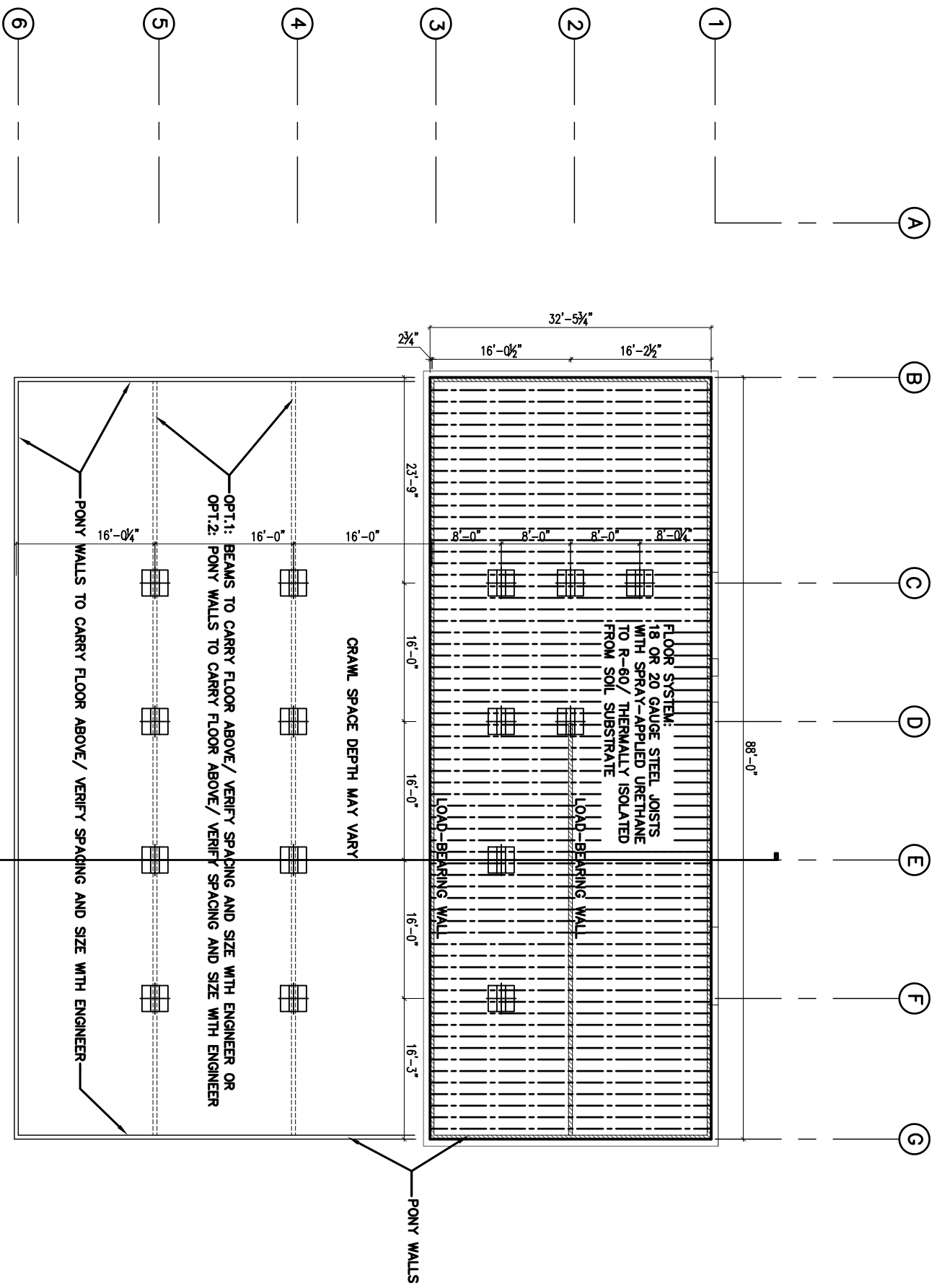
COLD CLIMATE HOUSING RESEARCH CENTER
CCHRC



PROJECT
MERTARVIK EVACUATION CENTER
FOR THE COMMUNITY OF NEWTOK
MERTARVIK, ALASKA
ISSUED
9 OCTOBER 2009
DESIGN DEVELOPMENT PROGRESS SET

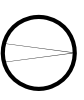
SITE PLAN
C1.0
SHEET 1 OF 11

NOT FOR CONSTRUCTION



1 FOUNDATION PLAN

Scale: 1"=1/16"



General Notes

DESIGNED BY:	AC
DRAWN BY:	AC, JG, KS
No.	Rev./Issue
	Date

COLD CLIMATE HOUSING RESEARCH CENTER
CCHRC
 1000 FAIRBANKS STREET
 P.O. BOX 82489
 FAIRBANKS, AK 99708-2489
 (907) 457-3454
 www.cchrc.org

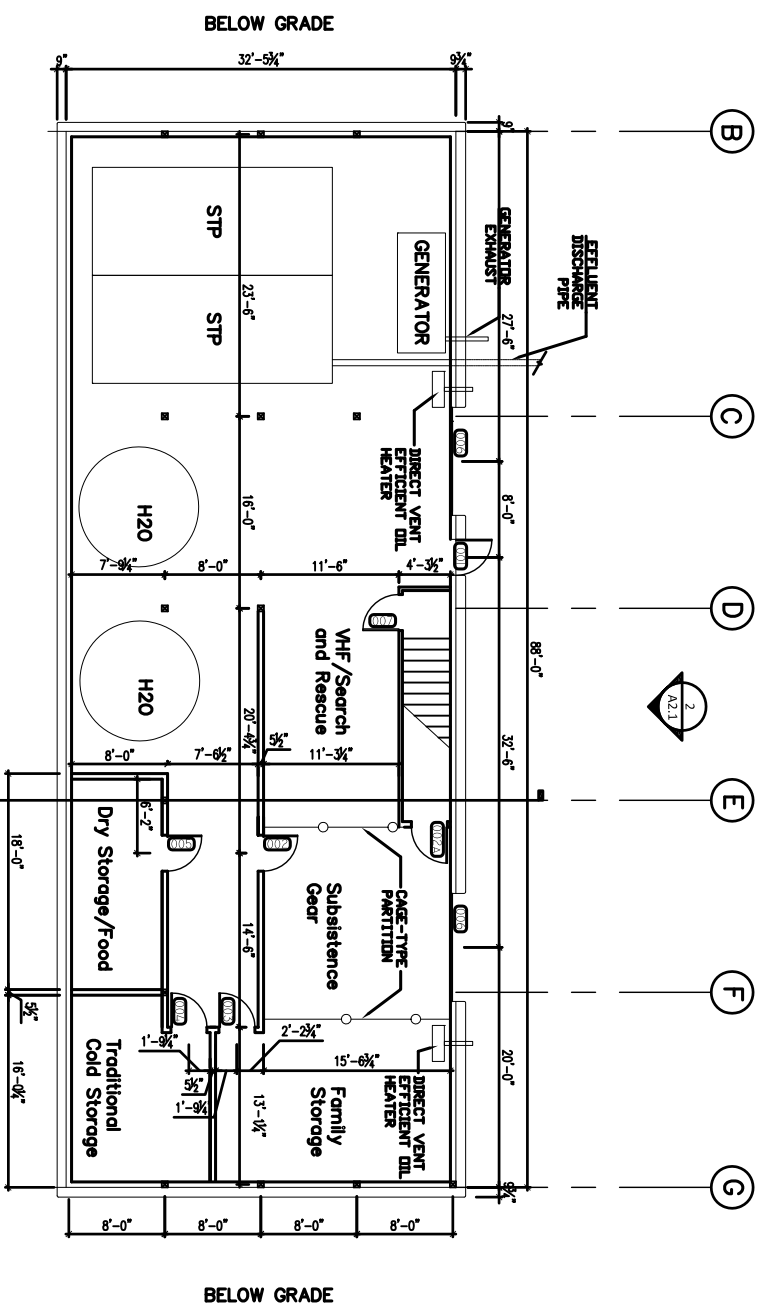


PROJECT
MERTARVIK
EVACUATION CENTER
 FOR THE COMMUNITY OF NEWTOK
 MERTARVIK, ALASKA
 9 OCTOBER 2009
 DESIGN DEVELOPMENT PROGRESS SET

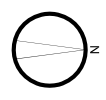
FOUNDATION PLAN
A1.0
 SHEET 2 OF 11

NOT FOR CONSTRUCTION

1 LOWER LEVEL FLOOR PLAN



NOTE: TRADITIONAL COLD STORAGE - UNINSULATED FLOOR, INSULATED INTERIOR WALLS AND CEILING



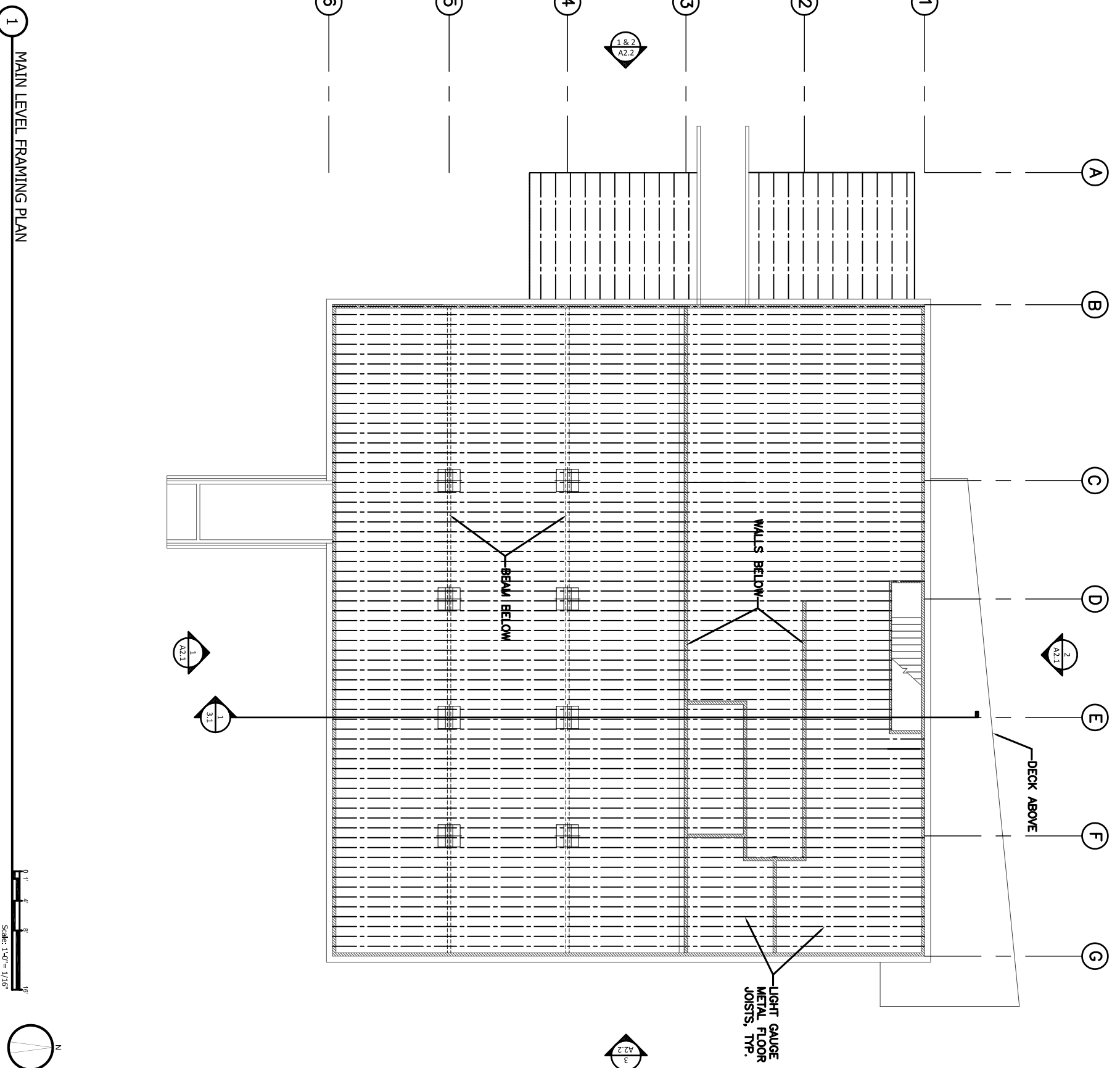
PROJECT
MERTARVIK EVACUATION CENTER
 FOR THE COMMUNITY OF NEWTOK
 MERTARVIK, ALASKA
 ISSUED
 9 OCTOBER 2009
 DESIGN DEVELOPMENT PROGRESS SET



COLD CLIMATE HOUSING RESEARCH CENTER
CCHRC
 1000 FAIRBANKS STREET
 P.O. BOX 82489
 FAIRBANKS, AK 99708-2489
 (907) 457-3454
 www.cchrc.org

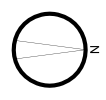
General Notes		
DESIGNED BY:	AC	
DRAWN BY:	AC, JG, KS	
No.	Rev./Issue	Date

NOT FOR CONSTRUCTION



1 MAIN LEVEL FRAMING PLAN

Scale: 1/4" = 1'-0"
1/8" = 1'-6"



SHEET **A1.2** OF 11

PROJECT
**MERTARVIK
 EVACUATION CENTER**
 FOR THE COMMUNITY OF NEWTOK
 MERTARVIK, ALASKA
 ISSUED
 9 OCTOBER 2009
 DESIGN DEVELOPMENT PROGRESS SET



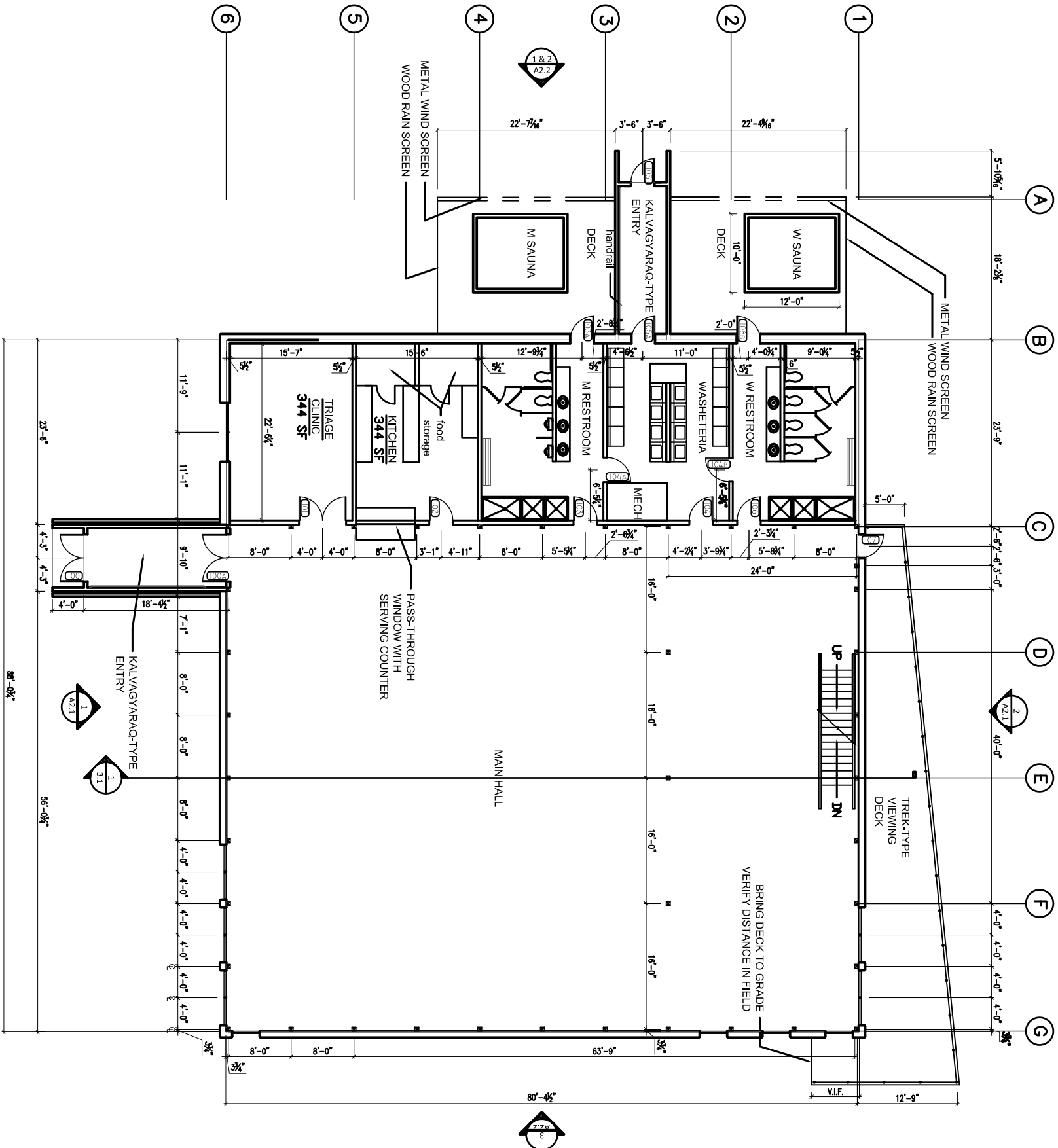
COLD CLIMATE HOUSING RESEARCH CENTER
CCHRC

1000 FAIRBANKS STREET
 P.O. BOX 82489
 FAIRBANKS, AK 99708-2489
 (907) 457-3454
 www.cchrc.org

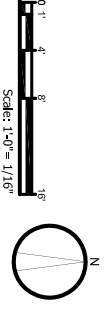
General Notes		
DESIGNED BY:	AC	
DRAWN BY:	AC, JG, KS	
No.	Rev./Issue	Date

NOT FOR CONSTRUCTION

DOOR SCHEDULE							
NO.	TYPE	WIDTH	HEIGHT	FRAME TYPE	HINGE	FINISH	REMARKS
001	STEEL	3'-0"	6'-8"	METAL	LH	FACTORY COLOR FINISH OR PAINTED	INSULATED WITH LOW-E TRIPLE PANE GLASS IN DOOR LIGHT AND TRANSOM
002	STEEL	3'-0"	6'-8"	METAL	LH	FACTORY COLOR FINISH OR PAINTED	
002A	STEEL	3'-0"	6'-8"	METAL	LH	FACTORY COLOR FINISH OR PAINTED	
003	STEEL	3'-0"	6'-8"	METAL	LH	FACTORY COLOR FINISH OR PAINTED	
004	STEEL	3'-0"	6'-8"	METAL	LH	FACTORY COLOR FINISH OR PAINTED	
005	STEEL	3'-0"	6'-8"	METAL	LH	FACTORY COLOR FINISH OR PAINTED	
006	STEEL	9'-0"	8'-0"	Overhead	N/A	FACTORY COLOR FINISH OR PAINTED	w/ Insulating Blanket R-46.3
007	STEEL	3'-0"	6'-8"	METAL		FACTORY COLOR FINISH OR PAINTED	
100	STEEL	6'-0"	6'-8"	METAL DOUBLE DOOR	BOTH	FACTORY COLOR FINISH OR PAINTED	INSULATED WITH LOW-E TRIPLE PANE GLASS IN TRANSOM, EMERGENCY EXIT WITH PANIC HARDWARE
100A	STEEL	6'-0"	6'-8"	METAL DOUBLE DOOR	BOTH	FACTORY COLOR FINISH OR PAINTED	EMERGENCY EXIT WITH PANIC HARDWARE AND TRANSOM
101	STEEL	6'-0"	6'-8"	METAL DOUBLE DOOR	BOTH	FACTORY COLOR FINISH OR PAINTED	INCLUDE WINDOW IN DOOR FOR VIEWING SAFETY
102	STEEL	3'-0"	6'-8"	METAL	LH	FACTORY COLOR FINISH OR PAINTED	INCLUDE WINDOW IN DOOR FOR VIEWING SAFETY
103	STEEL	3'-0"	6'-8"	METAL	LH	FACTORY COLOR FINISH OR PAINTED	
103A	STEEL	3'-0"	6'-8"	METAL	RH	FACTORY COLOR FINISH OR PAINTED	INSULATED WITH LOW-E TRIPLE PANE GLASS IN TRANSOM
104	STEEL	3'-0"	6'-8"	METAL	RH	FACTORY COLOR FINISH OR PAINTED	INCLUDE WINDOW IN DOOR FOR VIEWING SAFETY
104A	STEEL	3'-0"	6'-8"	METAL	RH	FACTORY COLOR FINISH OR PAINTED	
104B	STEEL	3'-0"	6'-8"	METAL	RH	FACTORY COLOR FINISH OR PAINTED	
105	STEEL	3'-0"	6'-8"	METAL	RH	FACTORY COLOR FINISH OR PAINTED	INSULATED WITH LOW-E TRIPLE PANE GLASS IN TRANSOM, EMERGENCY EXIT WITH PANIC HARDWARE
105A	STEEL	3'-0"	6'-8"	METAL	RH	FACTORY COLOR FINISH OR PAINTED	EMERGENCY EXIT WITH PANIC HARDWARE
106	STEEL	3'-0"	6'-8"	METAL	RH	FACTORY COLOR FINISH OR PAINTED	
106A	STEEL	3'-0"	6'-8"	METAL	LH	FACTORY COLOR FINISH OR PAINTED	INSULATED WITH LOW-E TRIPLE PANE GLASS IN TRANSOM
107	STEEL	3'-0"	6'-8"	METAL	LH	FACTORY COLOR FINISH OR PAINTED	INSULATED WITH LOW-E TRIPLE PANE GLASS IN DOOR LIGHT, EMERGENCY EXIT WITH PANIC HARDWARE



1 MAIN LEVEL FLOOR PLAN

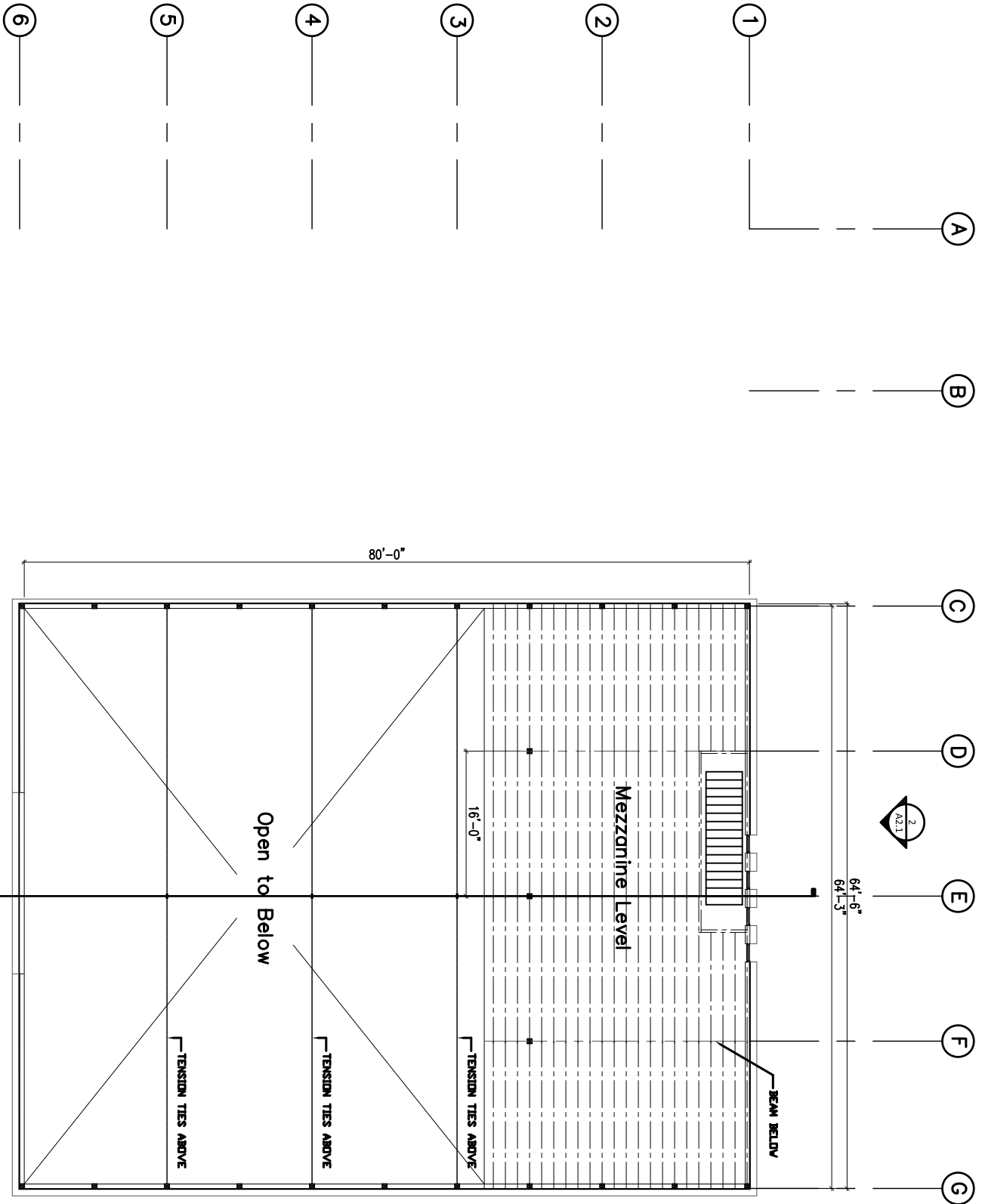


<p>PROJECT MERTARVIK EVACUATION CENTER FOR THE COMMUNITY OF NEWTOK MERTARVIK, ALASKA ISSUED 9 OCTOBER 2009 DESIGN DEVELOPMENT PROGRESS SET</p>	 CCHRC	<p>1000 FAIRBANKS STREET P.O. BOX 82489 FAIRBANKS, AK 99708-2489 (907) 457-3454 www.cchrc.org</p>	<p>General Notes</p> <table border="1" style="width: 100%;"> <tr> <td>DESIGNED BY:</td> <td>AC</td> </tr> <tr> <td>DRAWN BY:</td> <td>AC, JG, KS</td> </tr> <tr> <td>No.</td> <td>Rev./Issue</td> </tr> <tr> <td>Date</td> <td></td> </tr> </table>	DESIGNED BY:	AC	DRAWN BY:	AC, JG, KS	No.	Rev./Issue	Date	
DESIGNED BY:	AC										
DRAWN BY:	AC, JG, KS										
No.	Rev./Issue										
Date											

A1.3

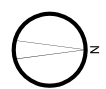
FIRST FLOOR PLAN

NOT FOR CONSTRUCTION



1 MEZZANINE FRAMING PLAN

Scale: 1/4" = 1'-0"



PROJECT
**MERTARVIK
 EVACUATION CENTER**
 FOR THE COMMUNITY OF NEWTOK
 MERTARVIK, ALASKA
 ISSUED
 9 OCTOBER 2009
 DESIGN DEVELOPMENT PROGRESS SET

MEZZANINE
 FRAMING PLAN

A1.4
 SHEET 11 OF 11



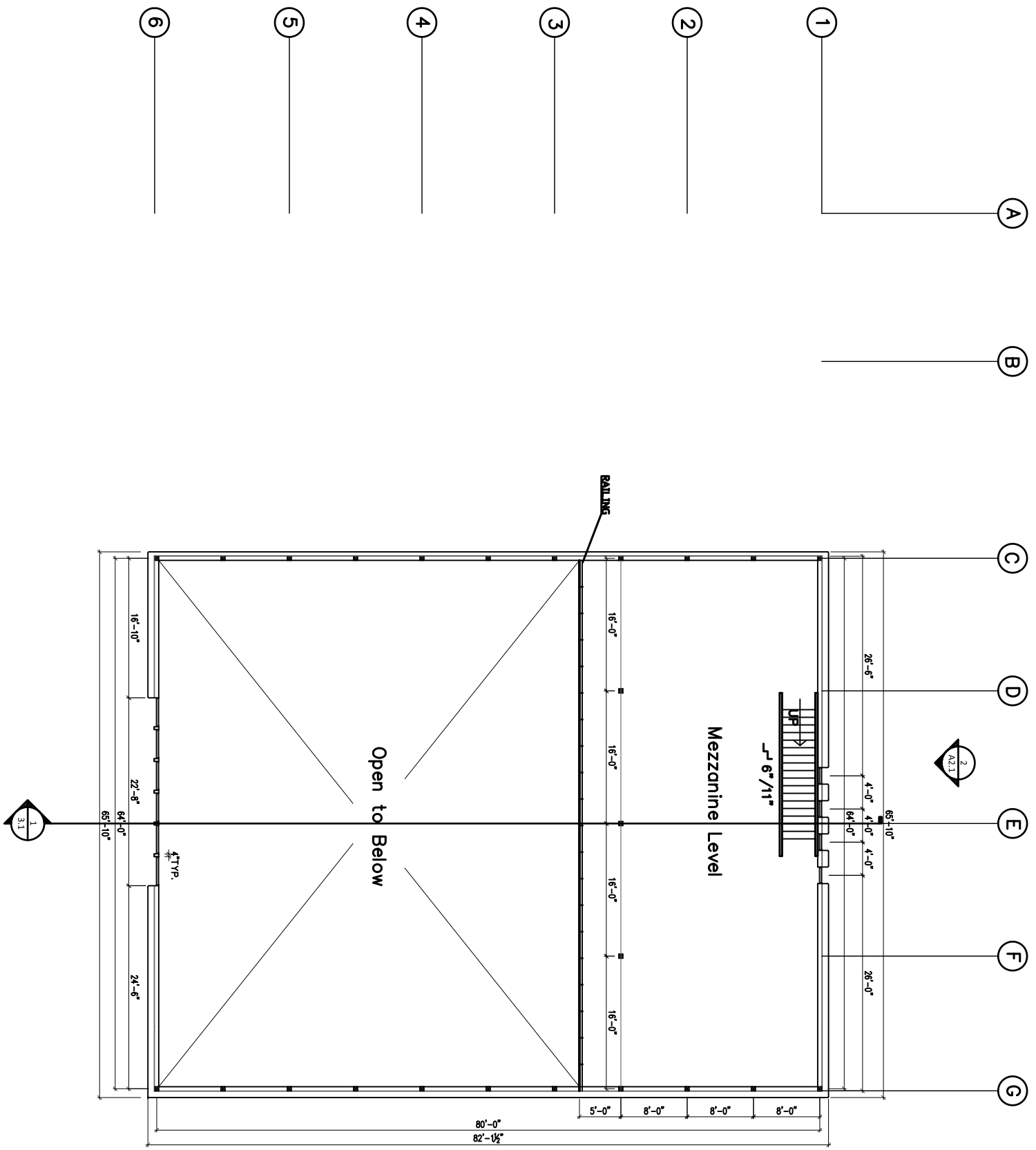
COLD CLIMATE HOUSING RESEARCH CENTER

CCHRC

1000 FAIRBANKS STREET
 P.O. BOX 82489
 FAIRBANKS, AK 99708-2489
 (907) 457-3454
 www.cchrc.org

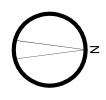
General Notes		
DESIGNED BY:	AC	
DRAWN BY:	AC, JG, KS	
No.	Rev./Issue	Date

NOT FOR CONSTRUCTION



1 MEZZANINE FLOOR PLAN

Scale: 1/16" = 1'-0"



A1.5
MEZZANINE FLOOR PLAN
SHEET 2 OF 11

PROJECT
MERTARVIK EVACUATION CENTER
FOR THE COMMUNITY OF NEWTOK
MERTARVIK, ALASKA
ISSUED
9 OCTOBER 2009
DESIGN DEVELOPMENT PROGRESS SET



COLD CLIMATE HOUSING RESEARCH CENTER
CCHRC

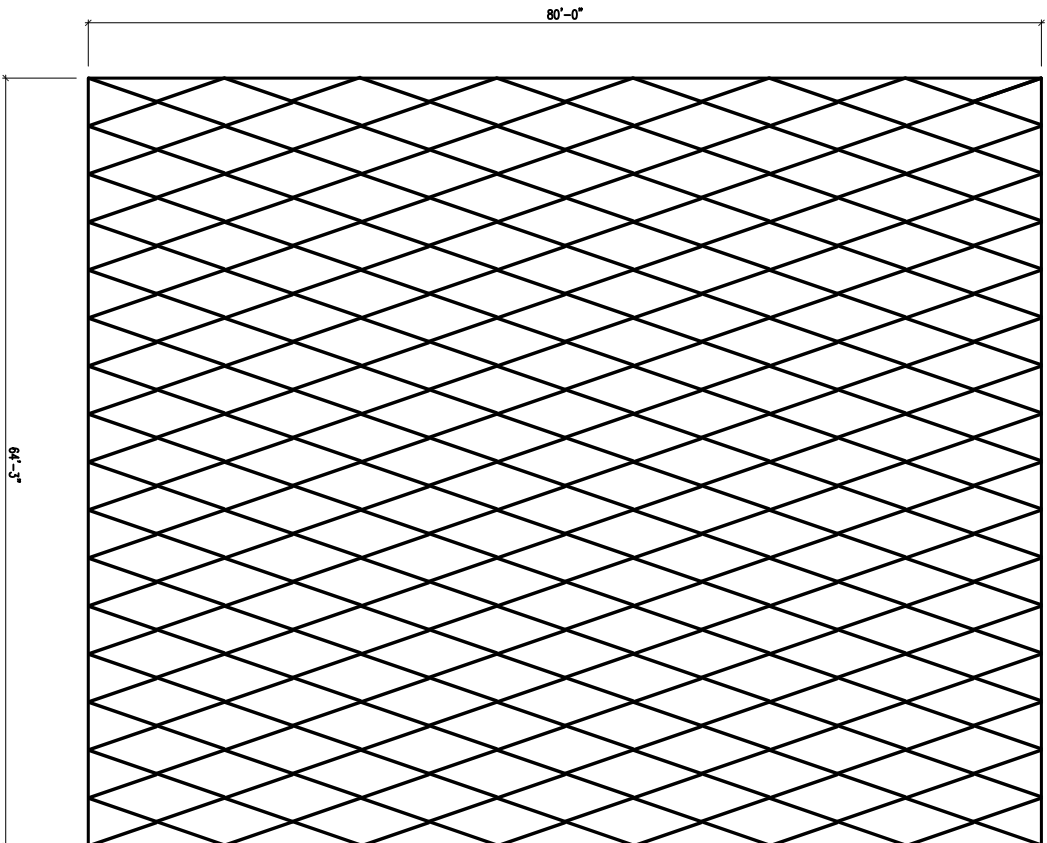
1000 FAIRBANKS STREET
P.O. BOX 82489
FAIRBANKS, AK 99708-2489
(907) 457-3454
www.cchrc.org

DESIGNED BY:	AC
DRAWN BY:	AC, JG, KS
No.	Rev./Issue
	Date

General Notes

NOT FOR CONSTRUCTION

1 ROOF FRAMING PLAN



DEPICTION OF LAMELLA STYLE ROOF SYSTEM.
PLEASE SEE DAR FOR MORE DETAILED
DESCRIPTION. ENGINEERING WILL BE
REQUIRED.

0' 1" 4" 8" 16"
Scale: 1/4" = 1/16"



General Notes

DESIGNED BY:	AC
DRAWN BY:	AC, JG, KS
No.	
Rev./Issue	
Date	

1000 FAIRBANKS STREET
P.O. BOX 82489
FAIRBANKS, AK 99708-2489
(907) 457-3454
www.cchrc.org

COLD CLIMATE HOUSING RESEARCH CENTER

CCHRC



PROJECT
MERTARVIK
EVACUATION CENTER
FOR THE COMMUNITY OF NEWTOK
MERTARVIK, ALASKA
ISSUED
9 OCTOBER 2009
DESIGN DEVELOPMENT PROGRESS SET

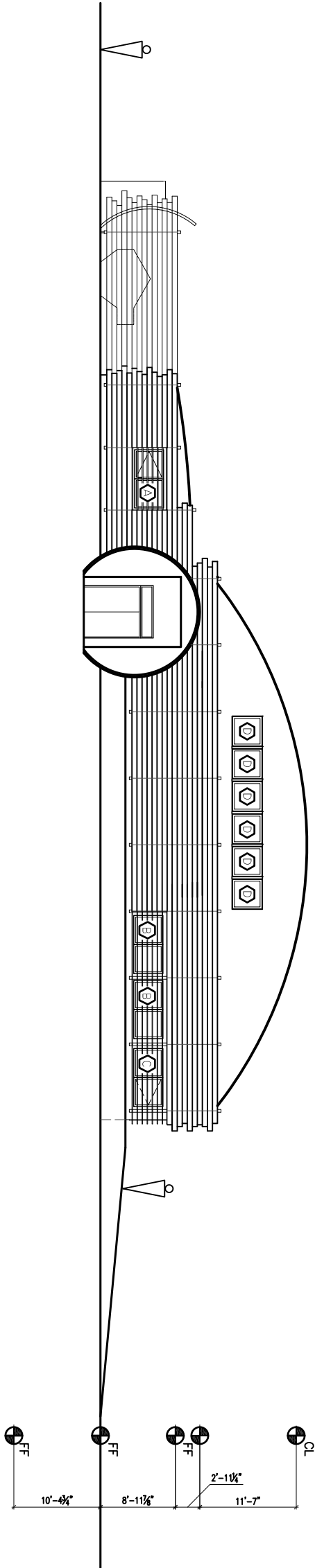
ROOF FRAMING PLAN

A1.6
SHEET 1 OF 11

NOT FOR CONSTRUCTION

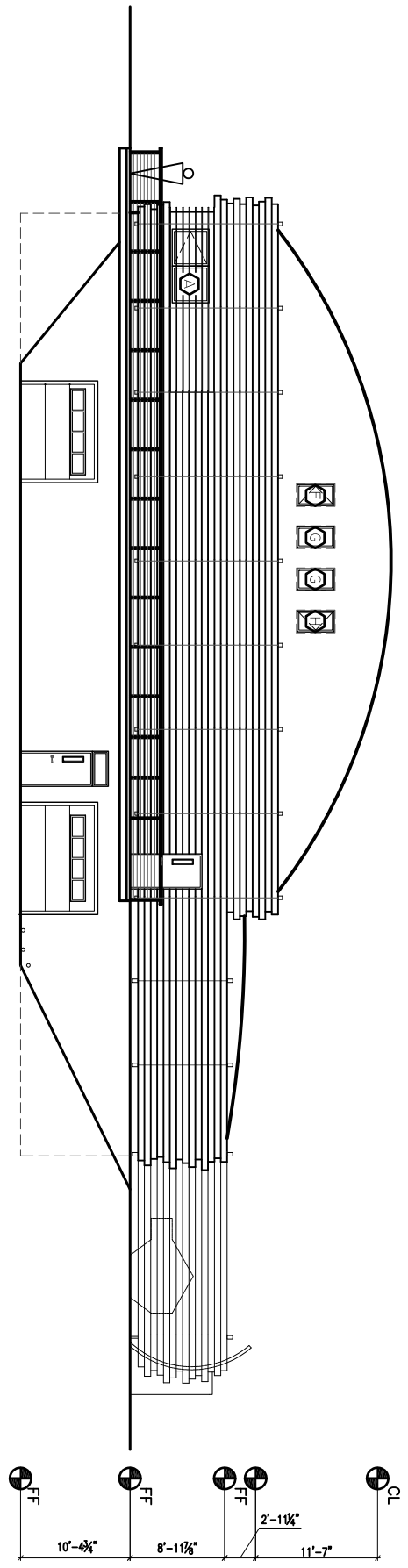
1 SOUTH ELEVATION

Scale: 1/4" = 1/16"



2 NORTH ELEVATION

Scale: 1/4" = 1/16"



SHEET **A2.1** OF 11

PROJECT
**MERTARVIK
 EVACUATION CENTER**
 FOR THE COMMUNITY OF NEWTOK
 MERTARVIK, ALASKA
 ISSUED
 9 OCTOBER 2009
 DESIGN DEVELOPMENT PROGRESS SET



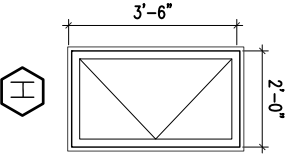
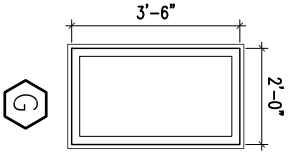
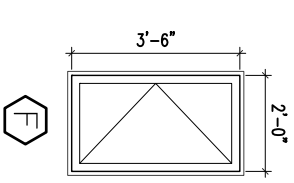
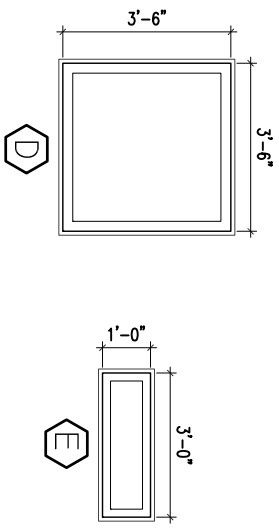
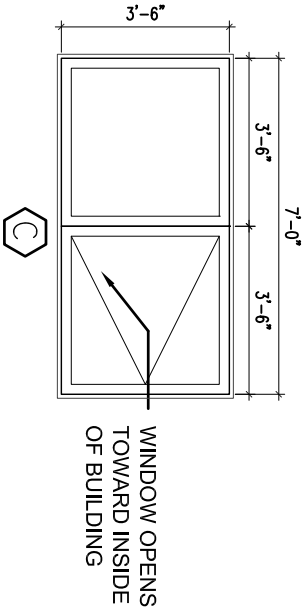
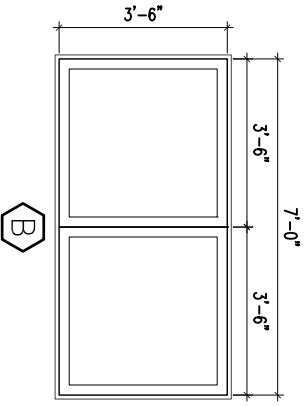
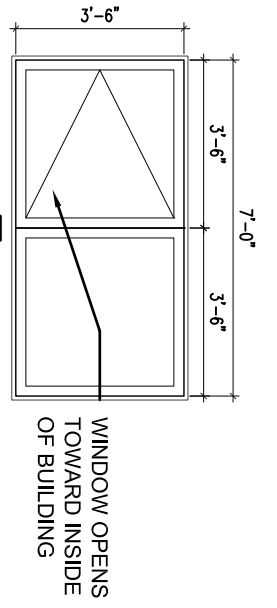
COLD CLIMATE HOUSING RESEARCH CENTER
CCHRC

1000 FAIRBANKS STREET
 P.O. BOX 82489
 FAIRBANKS, AK 99708-2489
 (907) 457-3454
 www.cchrc.org

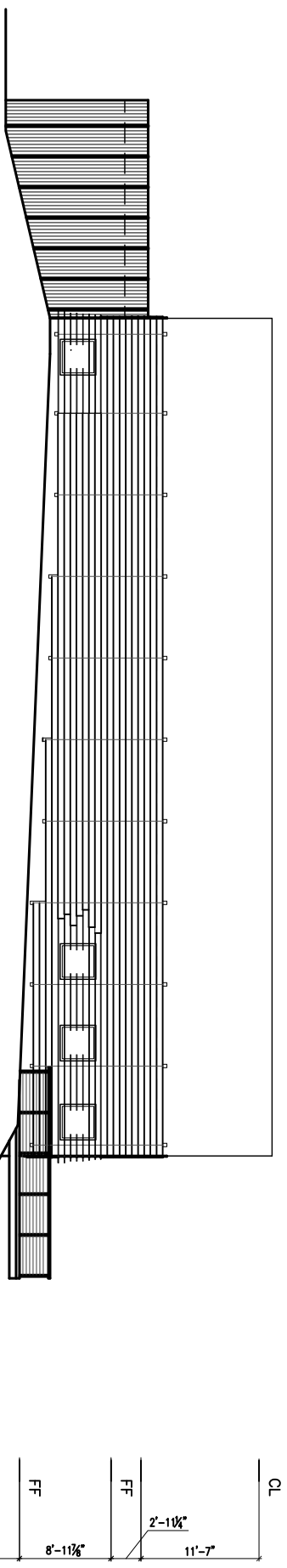
DESIGNED BY:	AC
DRAWN BY:	AC, JG, KS
No.	
Rev./Issue	
Date	

General Notes

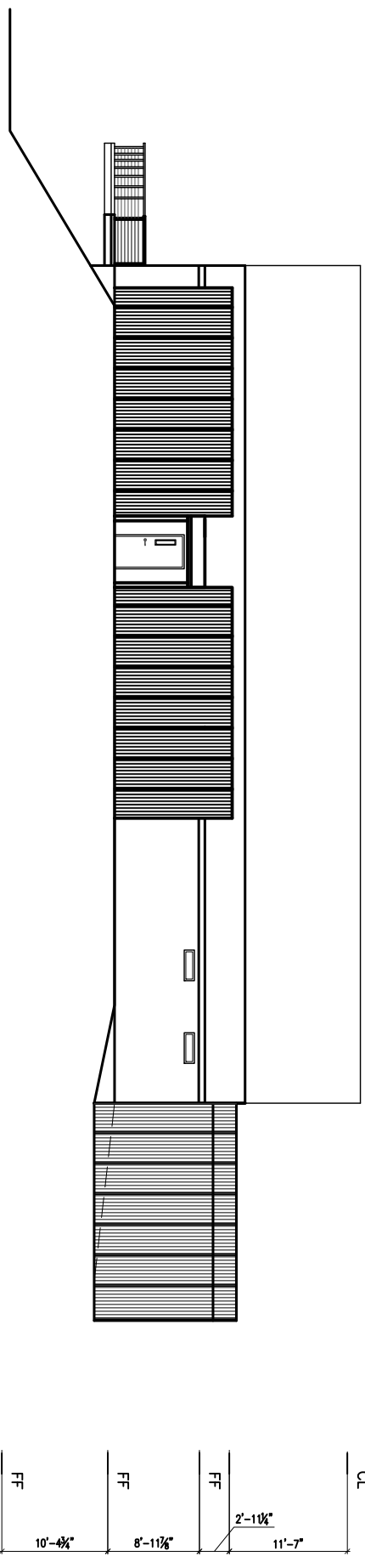
NOT FOR CONSTRUCTION



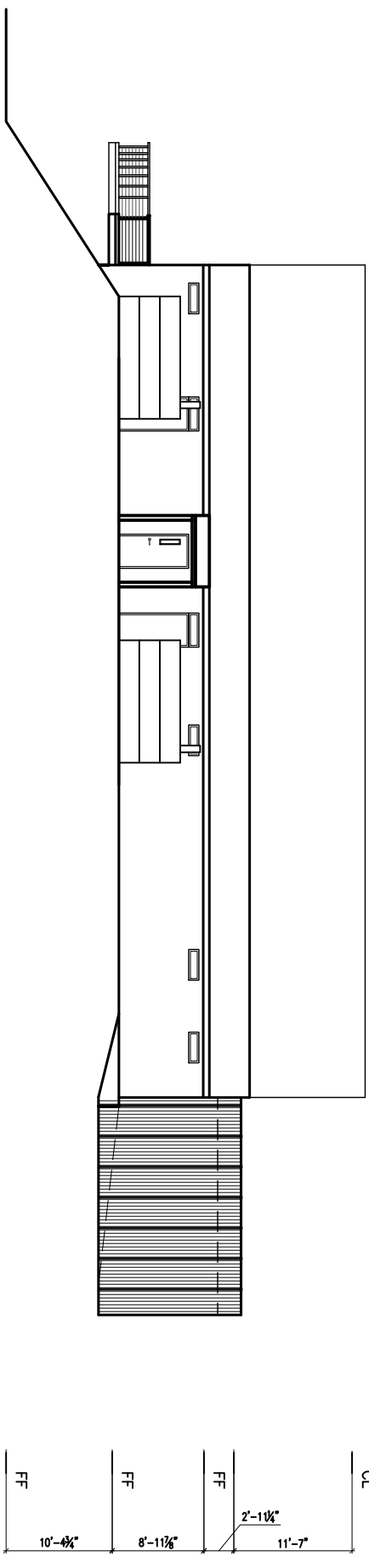
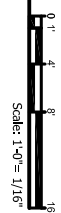
4 WINDOW TYPES



3 EAST ELEVATION



2 WEST ELEVATION



1 WEST ELEVATION (WITHOUT SCREEN)



General Notes

DESIGNED BY:	AC
DRAWN BY:	AC, JG, KS
No.	Rev./Issue
Date	

COLD CLIMATE HOUSING RESEARCH CENTER

CCHRC

1000 FAIRBANKS STREET
P.O. BOX 82489
FAIRBANKS, AK 99708-2489
(907) 457-3454
www.cchrc.org

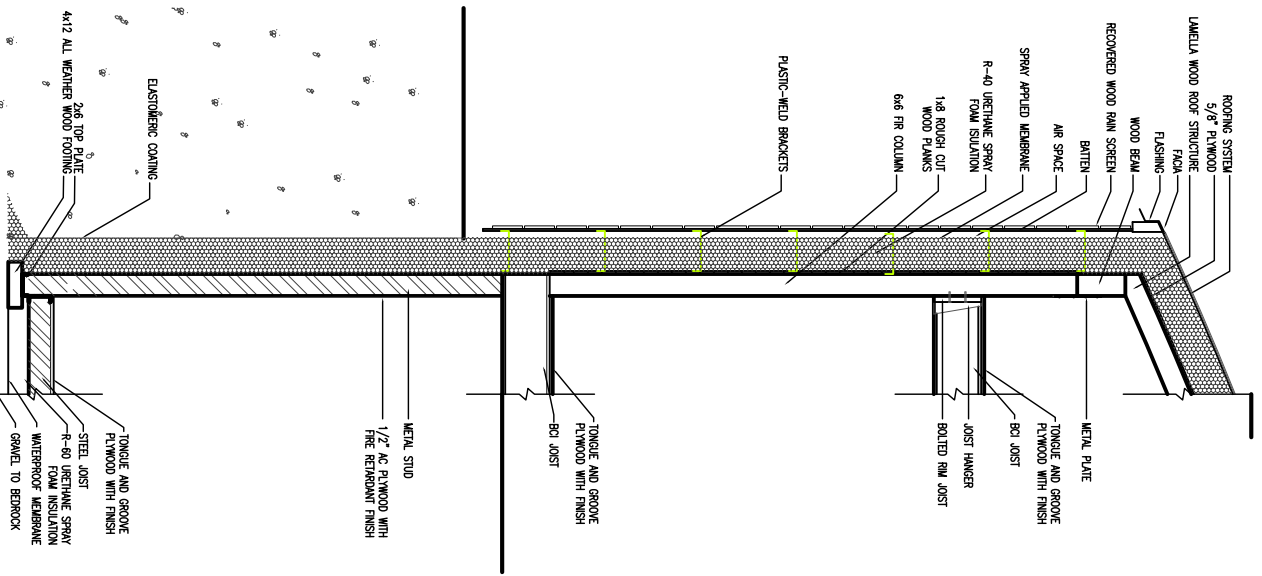


PROJECT
**MERTARVIK
EVACUATION CENTER**
FOR THE COMMUNITY OF NEWTOK
MERTARVIK, ALASKA
ISSUED
9 OCTOBER 2009
DESIGN DEVELOPMENT PROGRESS SET

EAST AND WEST
ELEVATIONS

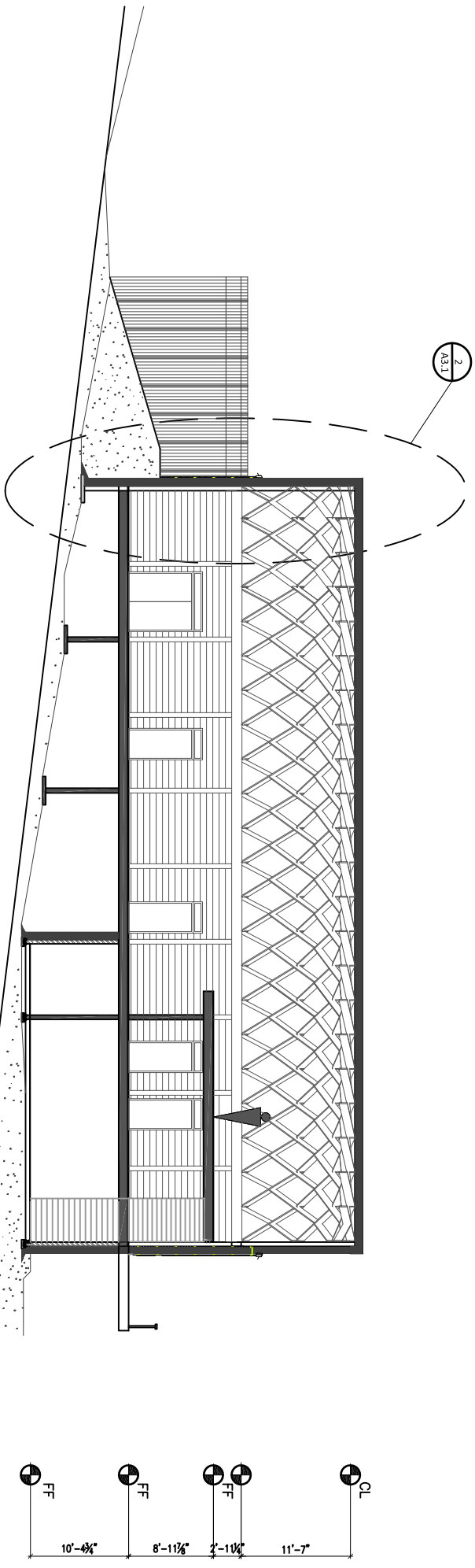
A2.2
SHEET 10 OF 11

NOT FOR CONSTRUCTION



2 WALL SECTION SOUTH
Scale: 1'-0" = 1/4"

1 LONGITUDINAL SECTION



Scale: 1'-0" = 1/16"

PROJECT
**MERTARVIK
EVACUATION CENTER**
FOR THE COMMUNITY OF NEWTOK
MERTARVIK, ALASKA
ISSUED
9 OCTOBER 2009
DESIGN DEVELOPMENT PROGRESS SET



COLD CLIMATE HOUSING RESEARCH CENTER
CCHRC

1000 FAIRBANKS STREET
P.O. BOX 82489
FAIRBANKS, AK 99708-2489
(907) 457-3454
www.cchrc.org

General Notes		
DESIGNED BY:	AC	
DRAWN BY:	AC, JG, KS	
No.	Rev./Issue	Date

SHEET **A3.1** OF 11