

Newtok Planning Group Meeting

Thursday, April 13, 2017, 1:30 – 3:30 pm.

Meeting Notes

In Attendance:

- **Newtok Village Council (NVC):** Frieda Carl, George Carl, Phillip Carl, Katherine Charles, Paul Charles, Bernice John, Teddy Tom
 - **Newtok Native Corporation (NNC):** Jimmy Charles, Lisa Charles, Marla Fairbanks, Simeon Fairbanks,
 - **Alaska Department of Commerce, Community, and Economic Development, Division of Community and Regional Affairs (AKDCCED/DCRA):** Sally Russell Cox
 - **Alaska Department of Environmental Conservation, Village Safe Water Program (AKDEC/VSW):** Sean Lee
 - **Alaska Department of Military and Veterans Affairs, Division of Homeland Security and Emergency Management (AKDMVA/DHSEM):** Brent Nichols
 - **Alaska Department of Transportation and Public Facilities (AKDOT/PF):** Morgan Merritt
 - **Alaska Energy Authority (AEA):** David Lockard
 - **Alaska Native Tribal Health Consortium (ANTHC):** Gavin Dixon, Joe Hess
 - **Association of Regional Housing Authorities Regional Housing Authority (AVCP/RHA):** Allen Joseph
 - **Bureau of Indian Affairs (BIA):** Dewayne Cooper, Stu Hartford, Jolene John, Lynn A. Polacca, Julie Stoneking-Radford
 - **Cold Climate Housing Research Center (CCHRC):** Jack Hébert
 - **Denali Commission:** Chris Allard, Don Antrobus
 - **DOWL:** Adison Smith, Randy Romenesko
 - **Environmental Protection Agency (EPA):** Tami Fordham, Molly Vaughan
 - **Federal Aviation Administration (FAA):** Keith Gordon
 - **Federal Emergency Management Agency (FEMA):** Science Kilner, Jeff Markham, Kristen Meyers
 - **Harvard Law School:** Shaun Goho
 - **Lower Kuskokwim School District (LKSD):** Dennis Cobos, Carlton Kuhns, Dan Walker
 - **National Oceanic and Atmospheric Administration (NOAA):** Amy Holman
 - **Quik Pro Accounting & Consulting:** David Rogers
 - **Rural Community Assistance Corporation (RCAC):** Jacqueline Shirley, Heather Cannon (Environmental Finance Center Network)
 - **Senator Murkowski's Office:** Deborah Vo
 - **U.S. Department of Agriculture (USDA):** Greg Stuckey
 - **U.S. Department of Housing and Urban Development (HUD):** Deb Alston, Colleen Bickford, Ann Gravier, Bill Zachares
-

Lynn A. Polacca, BIA Acting Regional Director welcomed the Newtok Planning Group (NPG) to the BIA offices. Dewayne Cooper provided the safety minute, and Jolene John interpreted from

English to Yup'ik. Sally Russell Cox led introductions, review of the agenda and facilitated the meeting.

MESSAGE FROM THE COMMUNITY

A number of members of the NVC and NNC attended the meeting by teleconference. They asked the group to proceed with the agenda.

GROUPS FORMED SINCE MAY 2016

Randy Romenesko, DOWL, provided an overview of the two groups formed since the NPG last met. Randy explained that DOWL's task has been to advance the relocation project toward construction in 2017 and 2018.

The **Mertarvik Relocation Steering Committee** was formed at the request of the NVC. It consists of two members from the NVC, two members from NNC, a representative from the Denali Commission (Don Antrobus), two state representatives (Sally Russell Cox, DCRA and Barbara Blake, Governor's office), Newtok's local coordinator, Romy Cadiente, as well as key staff from DOWL. BIA has also participated in most of the meetings. The committee's role is to advise the project manager, the NVC and the local coordinator on relocation and associated issues, and if necessary, to assist with mediating issues and concerns raised by the project manager, NVC or NNC. The steering committee has been meeting monthly. The project manager has provided the committee with status updates on activities accomplished, currently worked on and challenges being faced that we are trying to resolve. (Steering Committee updates are provided online at

<https://www.commerce.alaska.gov/web/dcra/PlanningLandManagement/NewtokPlanningGroup/MertarvikRelocationProjectSteeringCommittee.aspx>)

An ad hoc **Design and Construction Team** was formed to advise DOWL and the steering committee. The team is composed of agencies or contractors that have direct or indirect contracts with NVC for services in 2017 -2018, including AEA, ANTHC, AVCP Rural Housing Authority, CCHRC, Denali Commission, DOWL, Goldstream Engineering (GEI), Quik Pro Accounting & Consulting (QPA) and DOWL. The team meets monthly to discuss construction plans, schedules and logistics.

2017-2018 CONSTRUCTION PROJECTS

Randy Romenesko also provided an overview of anticipated construction activities for the 2017-2018 seasons. The expectation is to build four new homes (for a total of nine homes supporting approximately 45 residents), the shell of the Mertarvik Evacuation Center (MEC),

and primary power, water and sewer for the 45 residents to be living at Mertarvik full-time in 2018.

Roads and Quarry Development

GEI (the NVC's contractor for road development) is purchasing equipment and construction materials to develop the quarry and construct the road from the quarry to the town site. The barge will load equipment and material in Anchorage on May 11 for sailing to Mertarvik, hopefully arriving June 1st. GEI will set up a man-camp to support construction workers. The man-camp will later be turned over to Newtok for long-term use. GEI's road and quarry superintendent and AVCP RHA's project manager went to Newtok and Mertarvik in February to take an inventory of materials, tanks, and fuel at the Mertarvik. They also met with the community to begin recruiting local workers for the road and housing projects. The plan is to have people hired by mid-May so they'll be ready to begin work when the contractor arrives at Mertarvik.

The 2017 focus is to develop the quarry, complete road construction from the quarry to the townsite, and to develop a small spur road within the townsite to provide access for the development of housing pads for the new homes that will be built.

2017 Homes

AVCP RHA will be managing Newtok's HUD Imminent Threat grant funds. AVCP RHA has ordered shell material for four homes using Newtok's Title VI and HUD IT funds and will begin construction on the homes August 1, 2017, pending completion of housing pads by GEI. GEI has committed to having housing pads ready by July 31, 2017. Completion of the homes is slated for August 2018.

Four Newtok residents have qualified for the BIA HIP Category D loan buy-down program. There is potentially \$300,000 available for use in an integrated funding plan. The likely lead agency to manage these funds will be AVCP RHA.

BIA has committed funds for a demonstration and training house to be built in 2018 at Mertarvik. CCHRC will train Newtok residents on the construction of a cost-effective, energy-efficient home.

Mertarvik Evacuation Center

NVC has entered into a Memorandum of Agreement with ANTHC to use ANTHC's term A/E contractor, LCG Lantech to design the MEC shell and limited Mechanical, Electrical, and Plumbing design using State of Alaska designated legislative grant funding. LCG is

preparing bid documents for the construction of the MEC shell only, with an additive alternate for mechanical-electrical-plumbing work. The project is expected to be put out to bid in the next 2-3 months. Construction is expected to take place in 2018.

CCHRC is working under a consultant contract with LGC to provide input on the design development CCHRC completed in 2016 on the MEC shell (80% +/-) and historical design with NVC and the community on the interior functional space.

USACE funding for the MEC is not currently available. NVC is working with the USACE to negotiate a final, updated project agreement in fall 2017.

The LKSD has expressed an interest in using the MEC for a school program in the fall of 2018. LCG Lantech is working with LKSD on their program needs to incorporate them into the MEC design.

Financial

NVC hired QPA to assist with accounting and grants management. QPA is working with NVC staff to develop in-house capacity for properly accounting of receipt of funds and payment of expenses. QPA and DOWL are updating the NVC financial procedures and training the NVC staff on implementing the procedures.

(Please also see Attachment A, Randy Romenesko's written notes)

OTHER HOUSING

Mertarvik Housing Master Plan

Jack Hébert, CCHRC, discussed the Mertarvik Housing Master Plan which was completed in February 2017. The plan was a collaborative effort funded by the Association of Alaska Housing Authorities (AAHA), managed by AVCP RHA, with significant involvement by people of Newtok, who had a key role in the development of the plan. Jack encouraged the NPG to review the plan, if only the executive summary to understand the challenges to financing and building housing at Mertarvik, and how important it will be for the agencies to work together and with the community. CCHRC spent time with 55 households in Newtok; all but 11 households contributed to the body of work. We are looking at the development of at least 100 homes at Mertarvik. There are questions about what type of homes these will be, how they're built, what they're built from, and who builds them. There's a deep commitment in the plan to building homes that are sustainable: homes that people can afford to live in and don't have to struggle to stay warm; which reflect the local culture including adequate space for the storage of subsistence foods; and which are functional within the human needs of the people. The plan provides a great opportunity to do things right at Mertarvik.

The Mertarvik Housing Master Plan is available online at:

https://www.commerce.alaska.gov/web/Portals/4/pub/mertarvik_housing_master_plan.pdf

Hazard Mitigation Grant Program Buy-out Application

Brent Nichols, DHS&EM provided an update on the Hazard Mitigation Grant Program (HMGP) buyout application to FEMA from the NVC. Brent explained that DHS&EM has progressed from the transition of working with the NVC on an application to relocate 12 homes to amending the application to an acquisition/demolition project for 13 homes. DHS&EM received the modified application on February 1, 2017, and both DHS&EM and FEMA have reviewed the application. Both agencies found there are points of clarification still needed on the application before it can be submitted for funding. Brent reported that the project can no longer be funded under the disaster it was originally funded under, and that it will need to be moved to another disaster. This is not an issue; it simply means the application is being moved to another funding cycle. In the next week, DHS&EM will send the application back to the NVC to request additional information to ensure the application meets programmatic requirements. When the NVC re-submits the application, it will still need to go through FEMA's review, including environmental review. Adison Smith, DOWL, stated that a critical piece to the application is the identification of a financial institution to help leverage and package funding related to new housing. The NVC is anxious to hear back from DHS&EM in order to understand how they can proceed to work with housing funders for the project. Paul Charles, president of NVC, expressed concern and frustration over the further delay of the application due to the request for additional information. Bernice John, treasurer of NVC, stated that she is hopeful that the new State Hazard Mitigation Officer (Brent Nichols) and the new project manager (DOWL) will work together. Brent affirmed that he and the leadership at DHS&EM were very supportive of the project and wanted to see it be a success. Kristen Meyer, FEMA Region 10 Hazard Mitigation Branch Chief, stated that this is FEMA's program development funding from FEMA to the State of Alaska, and if this project is something that the State supports, it's something that FEMA supports as well, so they will continue working with the State and the NVC to make this application a success. FEMA has identified a couple of scenarios for the buyout project on which they would like to get clarification because this will affect the type of environmental review FEMA needs to do. FEMA has asked to part of the EIS being prepared, so that whichever of the scenarios end up working the best for Newtok, FEMA will be prepared to address it through the environmental review.

COMMUNITY SITE PLAN

Gavin Dixon, ANTHC, provided an overview of the recent effort to take the Mertarvik community layout plan up to a 65% design. The project began in November 2016 when ANTHC began the review of previous versions of the Mertarvik community layout that had been

developed between 2006 - 2015. The next step was to engage the community; the project team has been spending about 2 days each month in Newtok to better understand the community's values and priorities. A design charrette was conducted with a variety of technical stakeholders – mostly individuals currently involved in the ad hoc Design and Construction Team. Three alternatives were developed for the community to review. The community selected layout alternative two with a signed resolution. As ANTHC advances the development of the Community Layout Plan from its current 65% status to 100% completion, there will be no changes to major infrastructure, and minor changes to alignment, lots and siting of infrastructure on lots as the design is finalized. The 65% design will inform the ongoing EIS as well as current construction efforts. It will also be used to inform geotechnical investigations and survey and platting work that ANTHC will be working on this summer as well as future design efforts. Next steps include additional input from the community and stakeholders, receiving approval by resolution from the NVC on the final layout, and preparing a layout report which will provide some back-up with technical justifications, documentation of the process and phasing recommendations for design and construction going forward. ANTHC plans to have final layout approval from NVC by the end of June, and they will begin conducting survey work to plat the layout to help expedite future design and construction efforts.

(Please also see Attachment B, Gavin Dixon's presentation)

DENALI COMMISSION ENVIRONMENTAL IMPACT STATEMENT

Don Antrobus, Denali Commission, reported on efforts to complete an environmental impact statement (EIS) for the Mertarvik Infrastructure Development Project. The townsite plan that Gavin described delineates all the infrastructure that will be included in the environmental analysis. The Denali Commission will be leading this effort. The class of action, an EIS, is driven by the fact that Denali Commission regulations specifically define community relocation as an EIS, and the Denali Commission would like to address the cumulative impacts that infrastructure development will have at Mertarvik. The Denali Commission is partnering with the U.S. Army Corps of Engineers (USACE) who will be acting as a contractor for the Denali Commission to complete the writing of the environmental document. The USACE was selected for this because they have been involved in the relocation effort in the past and they've completed some of the environmental studies at Mertarvik. The EIS is being pursued on an extremely aggressive schedule with the hope that all work will be completed by October of 2017. The FAA and the Fish and Wildlife Service have been invited to participate as full cooperating agencies. Invitation letters have been sent out to all other federal and state agencies to participate. FEMA has asked to participate as a cooperating agency. To date, an agency kick-off meeting and community/agency scoping meetings have been conducted.

(see also

<https://www.commerce.alaska.gov/web/dcra/PlanningLandManagement/NewtokPlanningGroup/NEPADocumentation.aspx>)

Other Infrastructure Projects

Don also reported on two additional infrastructure projects being funded by the Denali Commission. There is funding in place to design a landfill at Mertarvik as well as Preliminary Engineering Reports defining and recommending alternatives for Water Treatment, Water Distribution, and Sewer Collection. Denali Commission will also be funding some additional geotechnical work that ANTHC will be conducting this summer.

MERTARVIK ENERGY MASTER PLAN

David Lockard, AEA, reported on the energy master plan that AEA is developing for Mertarvik. The plan includes the design of a new bulk fuel facility and power house. The powerhouse will include an electrical grid and a heat-recovery system that will provide heat from the generators to the nearby buildings. There's a feasibility study associated with it for renewable energy as well as an inter-tie to the community of Toksook Bay (southeast Nelson Island). The bulk fuel facility will include a barge header system to receive fuel from a barge. The scope of work also includes planning at Newtok as well to help the power company expand its service area. They are assisting Newtok with a power cost equalization application. A draft energy master plan has been completed. The final energy master plan is due the end of May, conceptual design of the bulk fuel facility and power house is due at the end of June, 65% design is due the end of August, and final design is slated to be complete at the end of November 2017.

UNFUNDED GAP ITEMS

On behalf of Romy Cadiente, Randy Romenesko addressed a number of outstanding funding gaps for relocation activities over the next two years, including funding for a housing specialist, continued funding for the project management team and the local coordinator, pioneering phase power, mechanical-electrical-plumbing of the MEC, geophysical investigation of the entire village site; septage pit and mini-landfill design and construction; aerial LiDAR survey; assessment of materials in Newtok that can be relocated to Mertarvik; and man-camp winterization. *(Please see Funding Memo, Attachment C).*

AGENCY UPDATES

Jacqueline Shirley, Rural Community Assistance Corporation (RCAC), said the RCAC could provide a range of services to Newtok including loans for self-help, community facilities and environmental infrastructure as well as technical and capacity development. RCA staff could

also provide housing specialist services. She encouraged the NVC to contact her to see how RCAC could get involved with the relocation effort.

Amy Holman from NOAA asked whether LiDAR that was flown a couple of years ago by USGS and the Western Alaska Landscape Conservation Cooperative was sufficient , because it did cover some of the Mertarvik townsite. The data acquired at was 2-foot contours which is insufficient for utility and roadwork design purposes. [**Note:** *The USGS LiDAR does not cover the entirety of the townsite. The data has not been available for evaluation to date, but it is expected the LiDAR captured would sufficient for 1 foot contour detail. Orthoimagery has also been acquired of the townsite, however it was determined that the effort had insufficient ground support to establish a reliable surface. Additionally, the technology utilized has challenges with accuracy when it comes to vegetation. Since the Newtok Planning Group meeting was held, it was determined that the combination of the two data sets under development indicates that additional aerial survey is unlikely to produce significant additional value to the relocation efforts.*]

Dewayne Cooper and Don Antrobus spoke about barracks that joint Base Elmendorf-Richardson (JBER) is surplusing. The barracks could be separated and used as housing units. The NVC will make a site visit to JBER to inspect the barracks in a couple of weeks and determine if they are interested in them. Additional study is needed to determine the structural and financial feasibility of the barracks. Jack Hébert said that CCHRC has a some funding that could be used to assess the feasibility of the units.

NEXT MEETING

The NPG agreed to hold the next meeting during the last two weeks of August.

Meeting notes prepared by Sally Russell Cox.

ATTACHMENT A

13 April, 2017

Newtok Planning Group Meeting

Good afternoon. I am Randy Romenesko, a project manager with DOWL. NVC hired DOWL in late July 2016 to provide PM services for the relocation of the village of Newtok to Mertarvik. As such, we have been meeting with various agencies, funding partners, contractors and others to understand work performed in the past, to understand who is involved in the project and their roll, and to provide necessary direction and oversight to expend funds and perform work in 2017 and 2018. We are also working with agencies to identify gaps in the plan to relocate the community. It has been a very busy eight months.

A Steering Committee formed at the request of Newtok Village Council in August 2016. The Committee is comprised of 2 NVC representatives, 2 NNC representatives, a federal representative from Denali Committee (Don Antrobus), a state representative appointed by the Governor's office (Sally Russell-Cox & Barbara Blake), the local coordinator (Romy Cadiente) and DOWL (Adison Smith and me). The BIA has participated in the meetings as a tribal liason. The committee's role is to advise the project manager, NVC, Local Coordinator & NNC on the relocation and associated issues, and when necessary assist in mediating issues / concerns raised by the PM, NVC or NNC. The committee meets monthly for status report briefings, to assist with long term planning efforts, and to provide guidance on 'sticky' issues (housing finance; gap funding; financial issues).

A Design & Construction Team was formed as an ad hoc group to advise DOWL and the Steering Committee. The team consists of agencies who have agreements, or contractors that have direct or indirect contracts with NVC for services in 2017 / 2018. Services include preliminary engineering reports for future sanitation projects; master plan and design for provision of energy in Mertarvik; housing contractors and agencies; road design and field construction management firms; building designers; and financial services support. Current members include Alaska Energy Authority (AEA), Alaska Native Tribal Health Consortium (ANTHC), AVCP-Rural Housing Authority, Cold Climate Housing Research Center (CCHRC), Denali Commission, DOWL, Goldstream Engineering (GEI), LCG Lantech, Lower Kuskokwim School District (LKSD), Quick Pro Accounting (QPA) and NVC. The team meets monthly to discuss on-going construction plans and schedules, and to exchange information and knowledge about work planned, issues and challenges, and share logistics information.

The overall effort, on behalf of NVC, by DOWL and the Design & Construction team is to have at least 9 homes, the MEC shell, prime power, and basic sanitation infrastructure available in Mertarvik for residents to live full time starting in the fall of 2018. It is estimated the 9 homes will support around 45 residents who may be dislocated by the erosion events in Newtok. LKSD is aware of the plan and is taking action to be prepared to provided educational services to the community at Mertarvik.

Summary of 2017 and 2018 Construction Season Activities.

1) Roads and Quarry Development:

- a) GEI is actively procuring heavy equipment (loaders, dozers, dump trucks, backhoes, crushers, service trucks, etc), small tools and equipment and construction materials (culverts, geofabric, etc.) on behalf of NVC that is necessary for development of the quarry and construction of the road from the quarry to the town site. The barge loads in Anchorage on May 11 for sailing to Mertarvik.

- b) GEI will convert two existing IRT buildings into a kitchen/dining/recreation space (the large, 2000SF building) and a washeteria (small, 500SF building) as part of the workforce housing component. The remodeled IRT buildings will be available in late 2018 to residents who relocate to Mertarvik. Worker housing will be weatherport tents or similar temporary shelters. This mix of permanent and temporary structures provides the best value and lowest cost to the project.
- c) Road design, quarry development plan, and associated construction plans are advancing for the work this summer.
- d) GEI road / quarry superintendent and AVCP RHA project manager went to Newtok and Mertarvik in February. They obtained an inventory materials, tanks, fuel, etc. at the Mertarvik site. They also met with the community to start the recruitment process of local workers to work on the road and housing projects.
- e) DOWL is assisting NVC and GEI with hiring process with the goal of having local labor hired for the road construction project by May 15th.
- f) 2018 construction effort will focus on roads within the town site and house pads as funding is made available.

2) Housing:

- a) NVC has agreed to have AVCP RHA manage its HUD IT funds.
- b) AVCP RHA has ordered shell material for 4 houses using Title VI and HUD IT funds. AVCP RHA has agreed to start construction on 8/1/2017, pending completion of house pads. Final completion for the houses is anticipated to be August 2018.
- c) Goldstream Engineering (GEI) has committed to having house pads ready by 7/31/2017. GEI will assist AVCP RHA with necessary geo-tech work associated with the pads.
- d) FEMA application for a buy-out grant submitted to the State on 2/1/2017. NVC has not heard back from the State on the application status.
- e) NVC has qualified 4 residents for the BIA HIP Category D loan buy down program. There is potentially \$300,000 available for use in an integrated funding plan for additional houses. The logical lead agency for this AVCP RHA; talks are underway to see if this type of funding packaging is within the realm of work for AVCP RHA.
- f) BIA has committed funds for a demonstration and training house to be built in Mertarvik. The plan is to have CCHRC train local Newtok residents on construction of an extremely energy efficient home that is inexpensive to own and operate. This house will be built in 2018.
- g) NVC submitted a request to the State of Alaska for ~\$1.5 million for renovation of existing housing and IRT buildings in Mertarvik. NVC has not heard back from the State on this request.

3) Mertarvik Evacuation Center (MEC)

- a) NVC and ANTHC have executed a MOA to allow use of an ANTHC term A/E. LCG Lantech is providing the design of the MEC shell and limited interior build out; design effort has started. Funding for the work is a State legislative grant.
- b) DOWL is preparing bid documents for MEC construction. Schedule is to put the project out for public bid within the next 2 – 3 months for the shell only, with an additive alternate for MEP (mechanical/electrical/plumbing) work. Award will be contingent upon available funding, which currently is SOA grant 12-DC-550 (\$1.464M).
- c) Construction will most likely occur in 2018, with bidding of the work this summer.
- d) Funding from the USACE for this project is not available at this time. NVC is still working towards a final, updated Project Agreement with the USACE. This is expected late this fall.
- e) LKSD is interested in providing a school program in the MEC shell in fall of 2018. LCG will work with LKSD on their program needs and incorporate them into the initial design effort.

4) Financial

- a) Quik Pro Accounting (QPA) hired to provide accounting and grants management services to NVC. They are working with NVC staff to develop in-house capacity for properly accounting of receipt of funds and payment of expenses.
- b) QPA and DOWL are updating the NVC financial procedures and training the NVC staff on implementing the procedures.

5) Energy

- a) AEA is leading the effort to develop the community energy plan that includes addressing the various phases of community development. (See attached.) AEA and its consultants traveled to Newtok in March to meet with the community on its draft plan.
- b) AEA, as part of their master plan, is working on how to best provide a small power plant and grid for the 'pioneer' homes in 2018. David Lockard will be addressing this with more detail later in this meeting.

6) Gaps Identified by NVC and others for 2018 Pioneer services.

- a) Housing funds to leverage BIA HIP program and FEMA buy-out program funds. A Community Development Financial Institution (CDFI) actively putting together housing loan packages and leveraging various funding sources on behalf of NVC would be beneficial to the community.
- b) Funding for relocation of existing houses from Newtok to Mertarvik. There is significant potential to move existing house structures from Newtok to Mertarvik in the winter over the frozen tundra and ice. NVC will have equipment in Mertarvik in 2017 that can assist with this effort. A skid and other moving tools (air bags for jacking, large blocking, etc.) should be cached in Newtok this summer to offer the potential to move houses in a traditional Alaskan manner – skid them in winter. Several residents in Newtok expressed a desire to have their house relocated in this fashion as their house has many years of use in it.
- c) Funding for prime power plant and distribution system for pioneer phase of project. Power plant will be located next to the MEC and it is envisioned the plant could provide heating for the MEC. The community desire is for the electrical system to be functional by fall of 2018.
- d) Funding for MEC mechanical-electrical-plumbing (MEP) needed. NVC has state grant 12-DC-550 that should cover costs to erect the shell and some interior walls. We believe the grant is not sufficient to cover MEP costs needed to make the MEC functional for its intended use. A heating plant (boiler) and interior lighting is needed to make the MEC a functional shelter for the residents at Mertarvik.
- e) Utility design and construction dollars for honey bucket / septage disposal pit and a trash disposal pit for pioneer homes in 2018.
- f) School teacher housing needed in 2018.
- g) The community is working towards identifying other needs (store, health aides, transportation logistics) required to start the relocation process. The people of Newtok are anxious to take the small first step, that is a large leap, towards moving to Mertarvik.

Mertarvik Relocation Project
High Level Schedule

April 2017

| | 2017 | | | | | | | | | | | | 2018 | | | | | | | | | | | | 2019 | | | | | | | | | | | | |
|--------------------------|------|-----|-----|-----|-----|-----|-----|-----|-----|-----|-----|-----|------|-----|-----|-----|-----|-----|-----|-----|-----|-----|-----|-----|------|-----|-----|-----|-----|-----|-----|-----|-----|-----|-----|-----|--|
| Project / Task | Jan | Feb | Mar | Apr | May | Jun | Jul | Aug | Sep | Oct | Nov | Dec | Jan | Feb | Mar | Apr | May | Jun | Jul | Aug | Sep | Oct | Nov | Dec | Jan | Feb | Mar | Apr | May | Jun | Jul | Aug | Sep | Oct | Nov | Dec | |
| | | | | | | | | | | | | | | | | | | | | | | | | | | | | | | | | | | | | | |
| Barging | | | | | | | | | | | | | | | | | | | | | | | | | | | | | | | | | | | | | |
| | | | | | | | | | | | | | | | | | | | | | | | | | | | | | | | | | | | | | |
| Quarry Development | | | | | | | | | | | | | | | | | | | | | | | | | | | | | | | | | | | | | |
| | | | | | | | | | | | | | | | | | | | | | | | | | | | | | | | | | | | | | |
| Roads | | | | | | | | | | | | | | | | | | | | | | | | | | | | | | | | | | | | | |
| Quarry to Town | | | | | | | | | | | | | | | | | | | | | | | | | | | | | | | | | | | | | |
| In Town | | | | | | | | | | | | | | | | | | | | | | | | | | | | | | | | | | | | | |
| | | | | | | | | | | | | | | | | | | | | | | | | | | | | | | | | | | | | | |
| Housing | | | | | | | | | | | | | | | | | | | | | | | | | | | | | | | | | | | | | |
| HUD IT | | | | | | | | | | | | | | | | | | | | | | | | | | | | | | | | | | | | | |
| Title VI | | | | | | | | | | | | | | | | | | | | | | | | | | | | | | | | | | | | | |
| BIA (Training House) | | | | | | | | | | | | | | | | | | | | | | | | | | | | | | | | | | | | | |
| Pads | | | | | | | | | | | | | | | | | | | | | | | | | | | | | | | | | | | | | |
| FEMA + Partners | | | | | | | | | | | | | | | | | | | | | | | | | | | | | | | | | | | | | |
| | | | | | | | | | | | | | | | | | | | | | | | | | | | | | | | | | | | | | |
| MEC | | | | | | | | | | | | | | | | | | | | | | | | | | | | | | | | | | | | | |
| Shell Design | | | | | | | | | | | | | | | | | | | | | | | | | | | | | | | | | | | | | |
| Shell Bid & Construct | | | | | | | | | | | | | | | | | | | | | | | | | | | | | | | | | | | | | |
| Interior Design | | | | | | | | | | | | | | | | | | | | | | | | | | | | | | | | | | | | | |
| Interior Bid & Construct | | | | | | | | | | | | | | | | | | | | | | | | | | | | | | | | | | | | | |
| | | | | | | | | | | | | | | | | | | | | | | | | | | | | | | | | | | | | | |
| Power - Phase 1 | | | | | | | | | | | | | | | | | | | | | | | | | | | | | | | | | | | | | |
| Design | | | | | | | | | | | | | | | | | | | | | | | | | | | | | | | | | | | | | |
| Construct | | | | | | | | | | | | | | | | | | | | | | | | | | | | | | | | | | | | | |
| | | | | | | | | | | | | | | | | | | | | | | | | | | | | | | | | | | | | | |
| Sanitation Facilities | | | | | | | | | | | | | | | | | | | | | | | | | | | | | | | | | | | | | |
| Landfill / HB Disposal | | | | | | | | | | | | | | | | | | | | | | | | | | | | | | | | | | | | | |
| | | | | | | | | | | | | | | | | | | | | | | | | | | | | | | | | | | | | | |
| School | | | | | | | | | | | | | | | | | | | | | | | | | | | | | | | | | | | | | |
| | | | | | | | | | | | | | | | | | | | | | | | | | | | | | | | | | | | | | |
| Move | | | | | | | | | | | | | | | | | | | | | | | | | | | | | | | | | | | | | |
| | | | | | | | | | | | | | | | | | | | | | | | | | | | | | | | | | | | | | |



Newtok Village Council
P.O. Box 5596
Newtok, AK 99559

Mertarvik Community
Phone (907)237-2202



MERTARVIK RELOCATION PROJECT

Funding Update

Prepared by DOWL and NVC

April 13, 2017

The purpose of this document is to provide the Newtok Planning Group with an update on funding for the Mertarvik Relocation Project. Below is a summary of funding available and funding gaps based on NVC's highest project priorities.

FUNDING AVAILABLE

The table below lists the current funding available for the Mertarvik Relocation Project.

| FEDERAL FUNDING | |
|---|---------------------|
| Denali Commission | \$ 220,141 |
| Housing and Urban Development (HUD IT & Title VI) | \$ 1,874,140 |
| Bureau of Indian Affairs - A16AV01004 | \$ 1,100,000 |
| Bureau of Indian Affairs (Transportation) | |
| A15AV00436 | \$ 3,751,832 |
| A15AV00454 | \$ 69,680 |
| A15AV00415 | \$ 100,000 |
| Subtotal Federal Funds | \$ 7,115,793 |
| NON-FEDERAL FUNDS | |
| *State of Alaska GO Bond | \$ (0) |
| MEC and Access Road - 11-DC-559 | \$ 212,959 |
| MEC and Access Road - 12-DC-550 | \$ 1,464,457 |
| Community Survey - 13-RR-030 | \$ 43,118 |
| Equipment M&O - 14-RR-063 | \$ 21,914 |
| Subtotal Non-Federal Funds | \$ 1,742,448 |
| | |
| TOTAL FUNDING AVAILABLE | \$ 8,858,241 |

*State of Alaska GO Bond funding has been released to NVC's accounts.

FUNDING PENDING GRANT APPLICATION REVIEW

The NVC is currently seeking funding from various agencies for housing and relocation efforts in 2017 and 2018. The table below lists current grant applications/agreements that are pending agency review and approval.

| FEDERAL GRANTS PENDING | |
|--|---------------------|
| FEMA Acquisition for 13 homes | \$ 1,397,000 |
| FY 17 HUD IT (NVC is revising application) | \$ 900,000 |
| NOAA Relocation Position and Toolkit Development | \$ 240,000 |
| Denali Commission FY17 Work plan | \$ 1,500,000 |
| TOTAL PENDING FUNDS | \$ 4,037,000 |

GAP FUNDING NEEDED

NVC and DOWL developed a list of project priorities that are critical to the relocation efforts over the next two years but do not have complete funding. The table below lists these project priorities in priority order.

| PRIORITY | PROJECT | FUNDING NEEDED |
|---------------------------------|--|---------------------|
| 1 | Housing Specialist - This individual would work with (or for) AVCP RHA to develop a mortgage package for residents that are currently on the list to be the first to relocate. They would also help apply for other housing funds. <i>Estimate based on known need and hourly rate for these types of services.</i> | \$ 100,000 |
| 2 | Project Management and Local Coordinator - DOWL and Romy Cadiente would continue services through 2017/2018. <i>Estimate based on 2016/2017 services provided.</i> | \$ 500,000 |
| 3 | Prime Power - Phase 1 - Energy funds to provide prime power for the pioneering phase. <i>Actual estimate will be known once AEA completes the Master Plan</i> | \$ 1,000,000 |
| 4 | MEC - Mechanical, Electrical, Plumbing. <i>Estimate based on CCHRC/Summit estimate for full construction of the building. Estimate for initial build out will be less.</i> | \$ 750,000 |
| 5 | Geophysical Investigation. <i>Provide sub-surface mapping of entire site for use by design teams.</i> | \$ 65,000 |
| 6 | Septage Pit and mini-Landfill Design. | \$ 72,000 |
| 7 | Aerial LIDAR Survey. | \$ 65,000 |
| 8 | Materials Assessment in Newtok (\$42,000) add \$8,000 for evaluation of which structures can be relocated (\$50,000 total). | \$ 50,000 |
| 9 | IRT/Man-Camp Winterization (\$50-\$200k). <i>Actual costs are unknown at this time. Goldstream is working on the design of the retrofit of 2 IRT buildings for the man-camp operations. Complete weatherization of buildings for year round use starting in 2018 is desired; cost is TBD.</i> | \$ 200,000 |
| 10 | Septage Pit & mini-Landfill Construction. | \$ 474,000 |
| TOTAL GAP FUNDING NEEDED | | \$ 3,026,000 |



Accelerated Coastal and Riverine Erosion Due to Permafrost Degradation

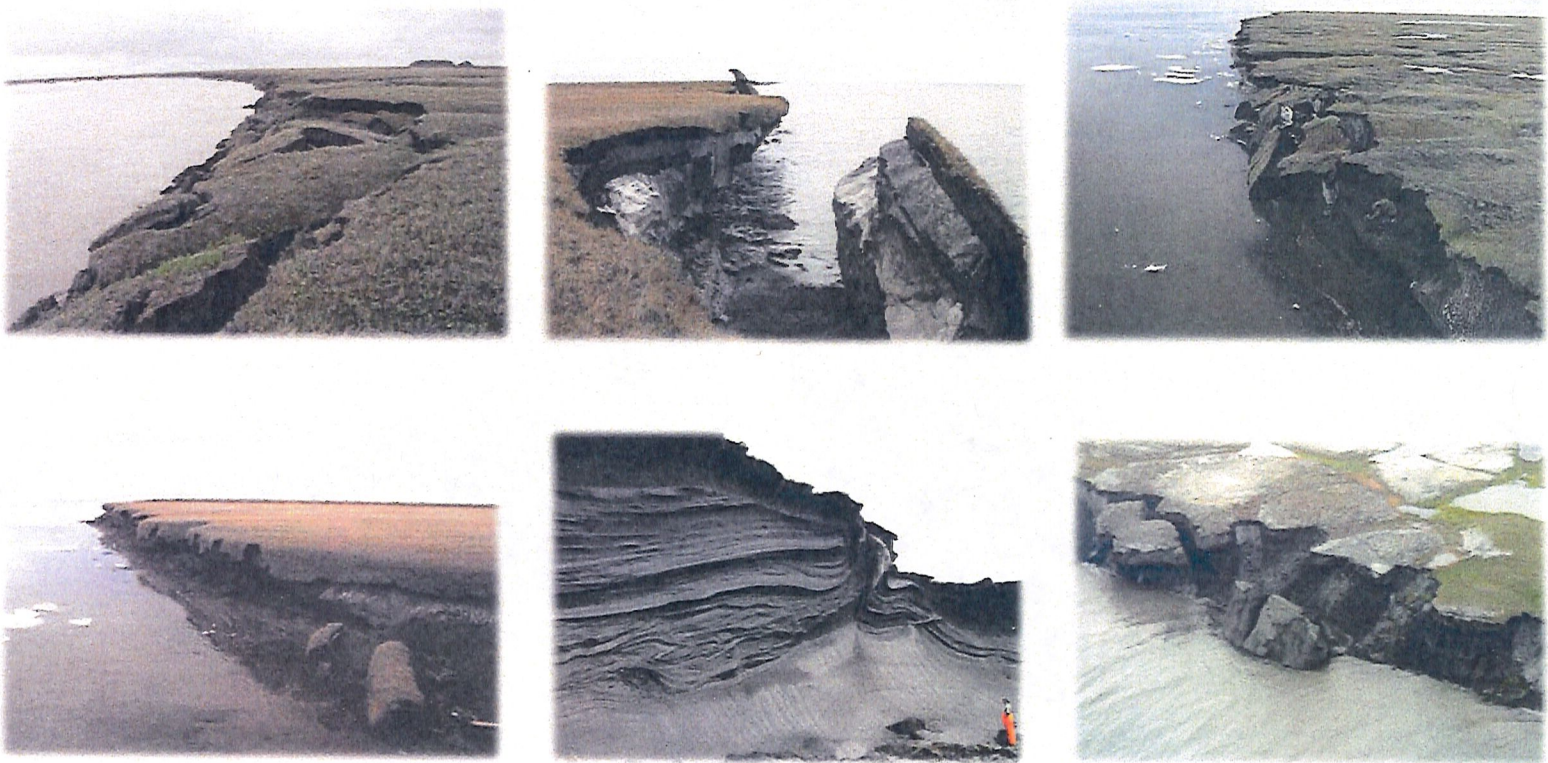
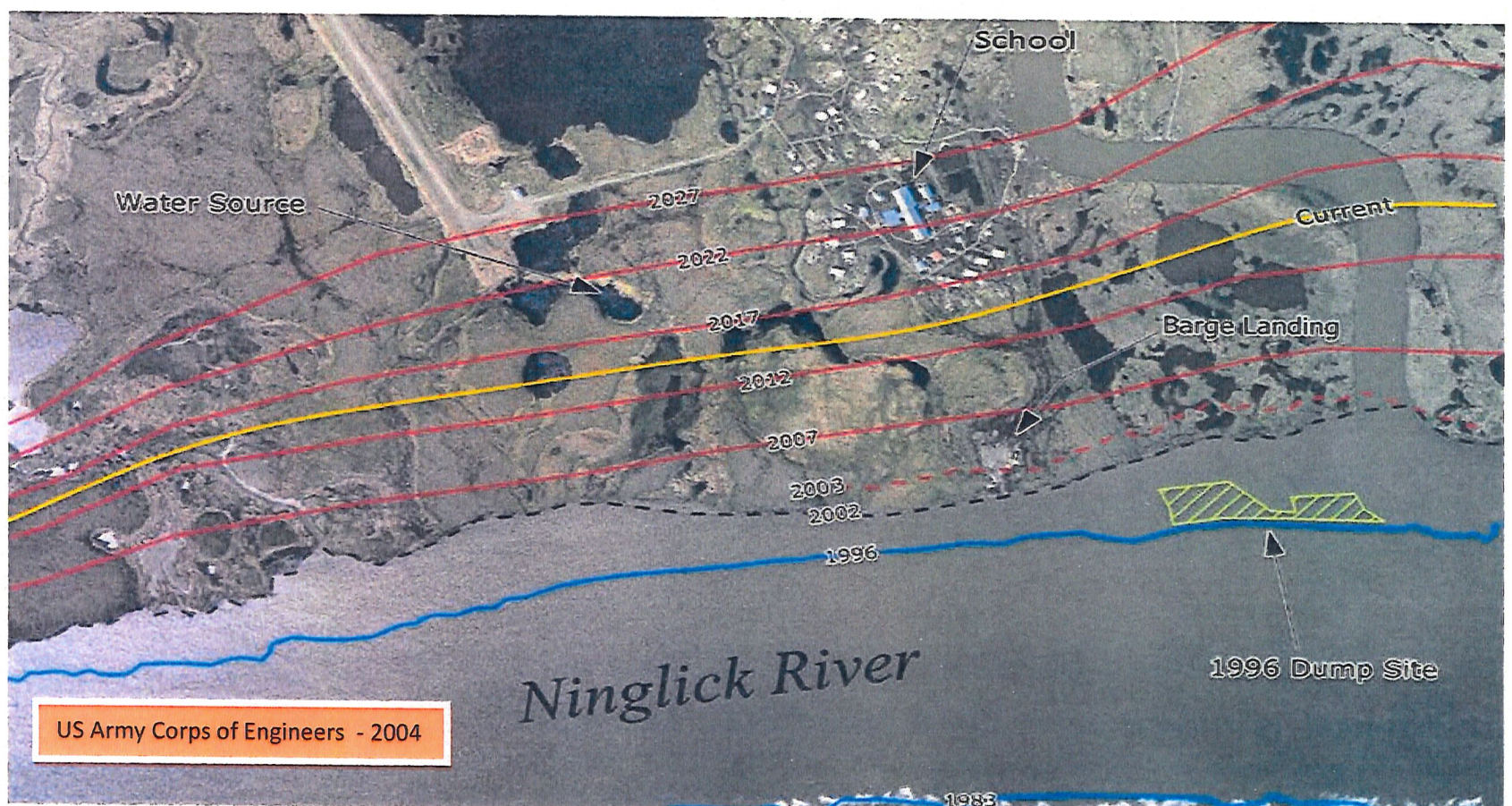


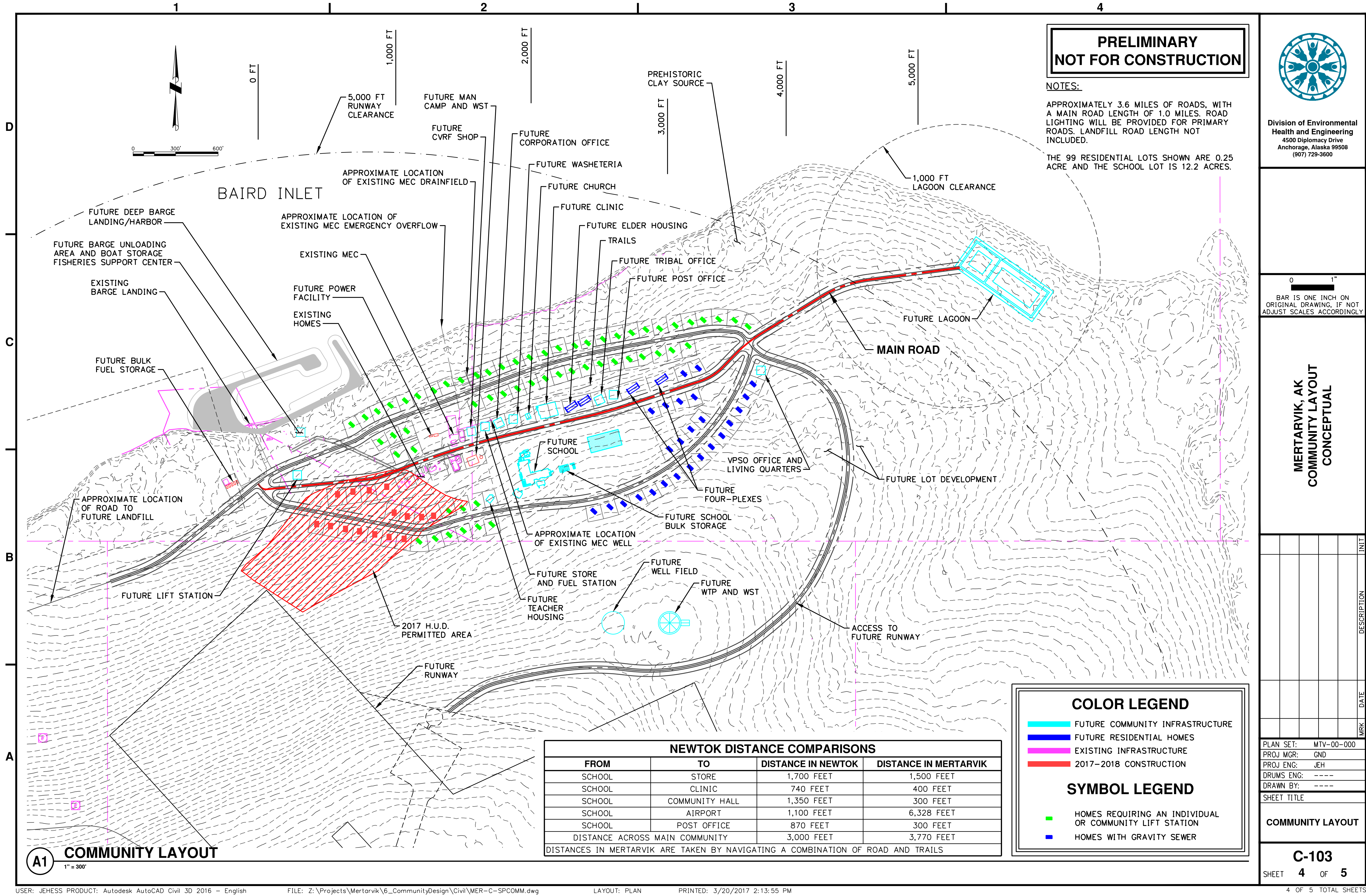
Photo Credits: National Snow & Ice Data Center, Climate Nexus, USGS, Reuters, National Geographic

Newtok Will Become Unsustainable Due to This On-Going Threat Within 4 Years



Photo Credits: fsmedia, Jeff Daquila





**PRELIMINARY
NOT FOR CONSTRUCTION**

NOTES:
APPROXIMATELY 3.6 MILES OF ROADS, WITH A MAIN ROAD LENGTH OF 1.0 MILES. ROAD LIGHTING WILL BE PROVIDED FOR PRIMARY ROADS. LANDFILL ROAD LENGTH NOT INCLUDED.
THE 99 RESIDENTIAL LOTS SHOWN ARE 0.25 ACRE AND THE SCHOOL LOT IS 12.2 ACRES.



Division of Environmental
Health and Engineering
4500 Diplomacy Drive
Anchorage, Alaska 99508
(907) 729-3600

0 1"
BAR IS ONE INCH ON
ORIGINAL DRAWING, IF NOT
ADJUST SCALES ACCORDINGLY

**MERTARVIK, AK
COMMUNITY LAYOUT
CONCEPTUAL**

| MRK | DATE | DESCRIPTION | INIT |
|-----|------|-------------|------|
| | | | |
| | | | |
| | | | |
| | | | |
| | | | |
| | | | |
| | | | |
| | | | |
| | | | |

PLAN SET: MTV-00-000
PROJ MGR: GND
PROJ ENG: JEH
DRUMS ENG: ----
DRAWN BY: ----
SHEET TITLE

COMMUNITY LAYOUT

C-103

SHEET **4** OF **5**

4 OF 5 TOTAL SHEETS

| NEWTOK DISTANCE COMPARISONS | | | |
|---|----------------|--------------------|-----------------------|
| FROM | TO | DISTANCE IN NEWTOK | DISTANCE IN MERTARVIK |
| SCHOOL | STORE | 1,700 FEET | 1,500 FEET |
| SCHOOL | CLINIC | 740 FEET | 400 FEET |
| SCHOOL | COMMUNITY HALL | 1,350 FEET | 300 FEET |
| SCHOOL | AIRPORT | 1,100 FEET | 6,328 FEET |
| SCHOOL | POST OFFICE | 870 FEET | 300 FEET |
| DISTANCE ACROSS MAIN COMMUNITY | | 3,000 FEET | 3,770 FEET |
| DISTANCES IN MERTARVIK ARE TAKEN BY NAVIGATING A COMBINATION OF ROAD AND TRAILS | | | |

COLOR LEGEND

- FUTURE COMMUNITY INFRASTRUCTURE
- FUTURE RESIDENTIAL HOMES
- EXISTING INFRASTRUCTURE
- 2017-2018 CONSTRUCTION

SYMBOL LEGEND

- HOMES REQUIRING AN INDIVIDUAL OR COMMUNITY LIFT STATION
- HOMES WITH GRAVITY SEWER

A1 COMMUNITY LAYOUT
1" = 300'



Mertarvik Community Layout Plan

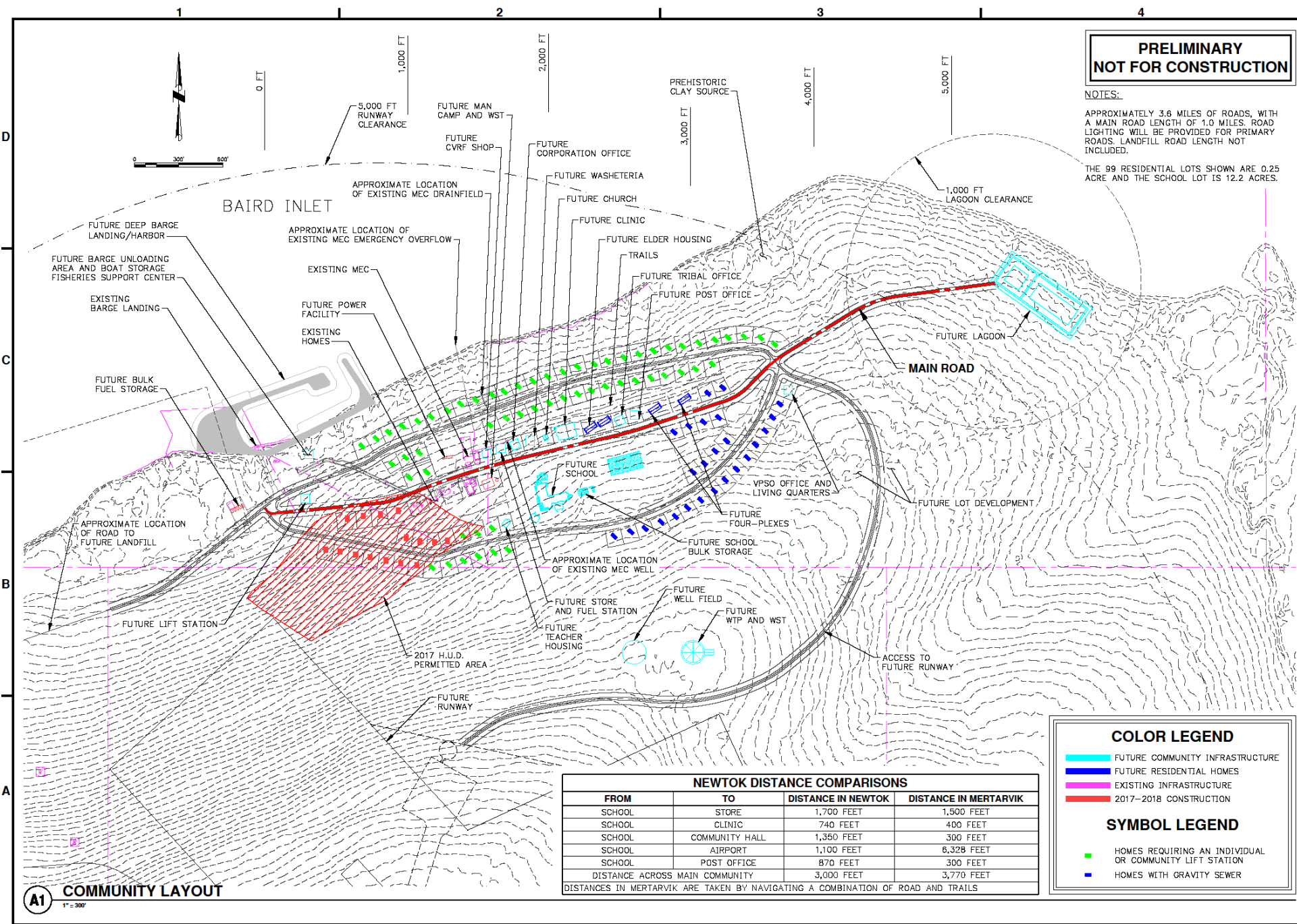
Gavin Dixon, Project Manager

Joe Hess, P.E., Project Technical Lead

Process

- Review Previous Progress
- Engage Community
- Determine Constraints and Goals
- Design Charrette Process
 - Technical Stakeholders
 - Agency Stakeholders
- Develop Three Alternatives for Community Review
- Community Select Preferred Alternative





**PRELIMINARY
NOT FOR CONSTRUCTION**

NOTES:
APPROXIMATELY 3.6 MILES OF ROADS, WITH A MAIN ROAD LENGTH OF 1.0 MILES. ROAD LIGHTING WILL BE PROVIDED FOR PRIMARY ROADS. LANDFILL ROAD LENGTH NOT INCLUDED.
THE 99 RESIDENTIAL LOTS SHOWN ARE 0.25 ACRE AND THE SCHOOL LOT IS 12.2 ACRES.



Division of Environmental
Health and Engineering
4500 Diplomat Drive
Anchorage, Alaska 99508
(907) 729-3000

0 1"
BAR IS ONE INCH ON
ORIGINAL DRAWING, IF NOT
ADJUST SCALES ACCORDINGLY

**MERTARVIK, AK
COMMUNITY LAYOUT
CONCEPTUAL**

| DATE | DESCRIPTION | BY |
|------|-------------|----|
| | | |
| | | |
| | | |
| | | |
| | | |
| | | |
| | | |
| | | |
| | | |

PLAN SET: MIV-00-000
PROJ MGR: GND
PROJ ENG: JEH
DRUMS ENG: ---
DRAWN BY: ---
SHEET TITLE

COMMUNITY LAYOUT

C-103

SHEET 4 OF 5

| NEWTOK DISTANCE COMPARISONS | | | |
|--------------------------------|----------------|--------------------|-----------------------|
| FROM | TO | DISTANCE IN NEWTOK | DISTANCE IN MERTARVIK |
| SCHOOL | STORE | 1,700 FEET | 1,500 FEET |
| SCHOOL | CLINIC | 740 FEET | 400 FEET |
| SCHOOL | COMMUNITY HALL | 1,350 FEET | 300 FEET |
| SCHOOL | AIRPORT | 1,100 FEET | 6,328 FEET |
| SCHOOL | POST OFFICE | 870 FEET | 300 FEET |
| DISTANCE ACROSS MAIN COMMUNITY | | 3,000 FEET | 3,770 FEET |

DISTANCES IN MERTARVIK ARE TAKEN BY NAVIGATING A COMBINATION OF ROAD AND TRAILS

COLOR LEGEND

- FUTURE COMMUNITY INFRASTRUCTURE
- FUTURE RESIDENTIAL HOMES
- EXISTING INFRASTRUCTURE
- 2017-2018 CONSTRUCTION

SYMBOL LEGEND

- HOMES REQUIRING AN INDIVIDUAL OR COMMUNITY LIFT STATION
- HOMES WITH GRAVITY SEWER

A1 COMMUNITY LAYOUT
1" = 300'

Next Steps

- Acquire Additional Input from Community and Stakeholders
- Implement Improvements
- Develop Town Site Layout Report
 - Technical Justifications
 - Process Documentation
 - Detailed Design-Construction Phasing Recommendation
- Final Layout Approval from NVC May 2017
- Begin Platting Summer 2017



ATTACHMENT C

MERTARVIK RELOCATION PROJECT

Funding Update

Prepared by DOWL and NVC

April 13, 2017

The purpose of this document is to provide the Newtok Planning Group with an update on funding for the Mertarvik Relocation Project. Below is a summary of funding available and funding gaps based on NVC's highest project priorities.

FUNDING AVAILABLE

The table below lists the current funding available for the Mertarvik Relocation Project.

| FEDERAL FUNDING | |
|---|---------------------|
| Denali Commission | \$ 220,141 |
| Housing and Urban Development (HUD IT & Title VI) | \$ 1,874,140 |
| Bureau of Indian Affairs - A16AV01004 | \$ 1,100,000 |
| Bureau of Indian Affairs (Transportation) | |
| A15AV00436 | \$ 3,751,832 |
| A15AV00454 | \$ 69,680 |
| A15AV00415 | \$ 100,000 |
| Subtotal Federal Funds | \$ 7,115,793 |
| NON-FEDERAL FUNDS | |
| *State of Alaska GO Bond | \$ (0) |
| MEC and Access Road - 11-DC-559 | \$ 212,959 |
| MEC and Access Road - 12-DC-550 | \$ 1,464,457 |
| Community Survey - 13-RR-030 | \$ 43,118 |
| Equipment M&O - 14-RR-063 | \$ 21,914 |
| Subtotal Non-Federal Funds | \$ 1,742,448 |
| | |
| TOTAL FUNDING AVAILABLE | \$ 8,858,241 |

*State of Alaska GO Bond funding has been released to NVC's accounts.

FUNDING PENDING GRANT APPLICATION REVIEW

The NVC is currently seeking funding from various agencies for housing and relocation efforts in 2017 and 2018. The table below lists current grant applications/agreements that are pending agency review and approval.

| FEDERAL GRANTS PENDING | |
|--|---------------------|
| FEMA Acquisition for 13 homes | \$ 1,397,000 |
| FY 17 HUD IT (NVC is revising application) | \$ 900,000 |
| NOAA Relocation Position and Toolkit Development | \$ 240,000 |
| Denali Commission FY17 Work plan | \$ 1,500,000 |
| TOTAL PENDING FUNDS | \$ 4,037,000 |

GAP FUNDING NEEDED

NVC and DOWL developed a list of project priorities that are critical to the relocation efforts over the next two years but do not have complete funding. The table below lists these project priorities in priority order.

| PRIORITY | PROJECT | FUNDING NEEDED |
|---------------------------------|--|---------------------|
| 1 | Housing Specialist - This individual would work with (or for) AVCP RHA to develop a mortgage package for residents that are currently on the list to be the first to relocate. They would also help apply for other housing funds. <i>Estimate based on known need and hourly rate for these types of services.</i> | \$ 100,000 |
| 2 | Project Management and Local Coordinator - DOWL and Romy Cadiente would continue services through 2017/2018. <i>Estimate based on 2016/2017 services provided.</i> | \$ 500,000 |
| 3 | Prime Power - Phase 1 - Energy funds to provide prime power for the pioneering phase. <i>Actual estimate will be known once AEA completes the Master Plan</i> | \$ 1,000,000 |
| 4 | MEC - Mechanical, Electrical, Plumbing. <i>Estimate based on CCHRC/Summit estimate for full construction of the building. Estimate for initial build out will be less.</i> | \$ 750,000 |
| 5 | Geophysical Investigation. <i>Provide sub-surface mapping of entire site for use by design teams.</i> | \$ 65,000 |
| 6 | Septage Pit and mini-Landfill Design. | \$ 72,000 |
| 7 | Aerial LIDAR Survey. | \$ 65,000 |
| 8 | Materials Assessment in Newtok (\$42,000) add \$8,000 for evaluation of which structures can be relocated (\$50,000 total). | \$ 50,000 |
| 9 | IRT/Man-Camp Winterization (\$50-\$200k). <i>Actual costs are unknown at this time. Goldstream is working on the design of the retrofit of 2 IRT buildings for the man-camp operations. Complete weatherization of buildings for year round use starting in 2018 is desired; cost is TBD.</i> | \$ 200,000 |
| 10 | Septage Pit & mini-Landfill Construction. | \$ 474,000 |
| TOTAL GAP FUNDING NEEDED | | \$ 3,026,000 |