

# 10. Chugach - Option A (Status Quo)

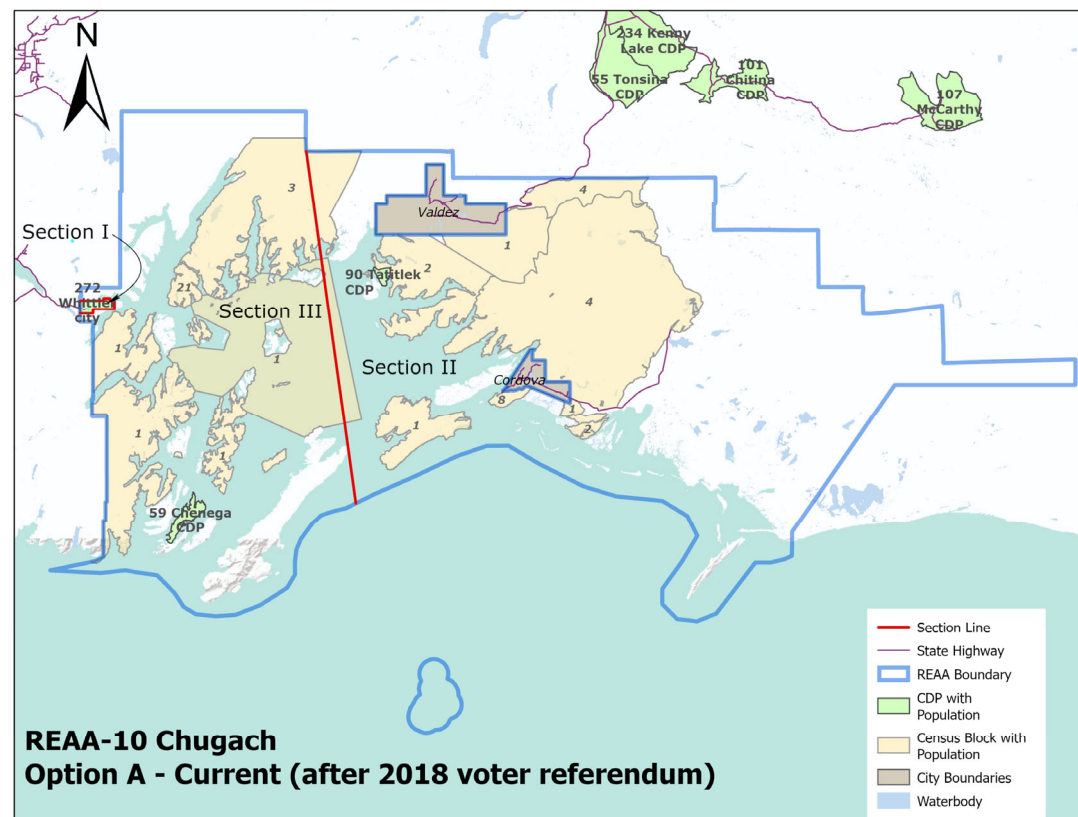
<b>Total Population:</b>	508	<b>Seats:</b>	5	<b>Target Pop:</b>	102
--------------------------	-----	---------------	---	--------------------	-----

	Residents	Seat Count	Seats	Pop per Seat	Pct Deviation
<b>Section I</b>		2	A B	136.0	33.86%
Whittier	272				
<b>Total</b>	272				

	Residents	Seat Count	Seats	Pop per Seat	Pct Deviation
<b>Section II</b>		2	C D	69.0	-32.09%
Tatitlek	90				
Areas (S & E of Tatitlek)	26				
Area (W of Tatitlek)	2				
Areas (E of Valdez)	20				
<b>Total</b>	138				

	Residents	Seat Count	Seats	Pop per Seat	Pct Deviation
<b>Section III</b>		1	E	98.0	-3.54%
Chenega	59				
Areas (NE of Chenega)	6				
Areas (N & W of Chenega)	33				
<b>Total</b>	98				

<b>Spread</b>	65.95%
---------------	--------



**REAA-10 Chugach  
Option A - Current (after 2018 voter referendum)**