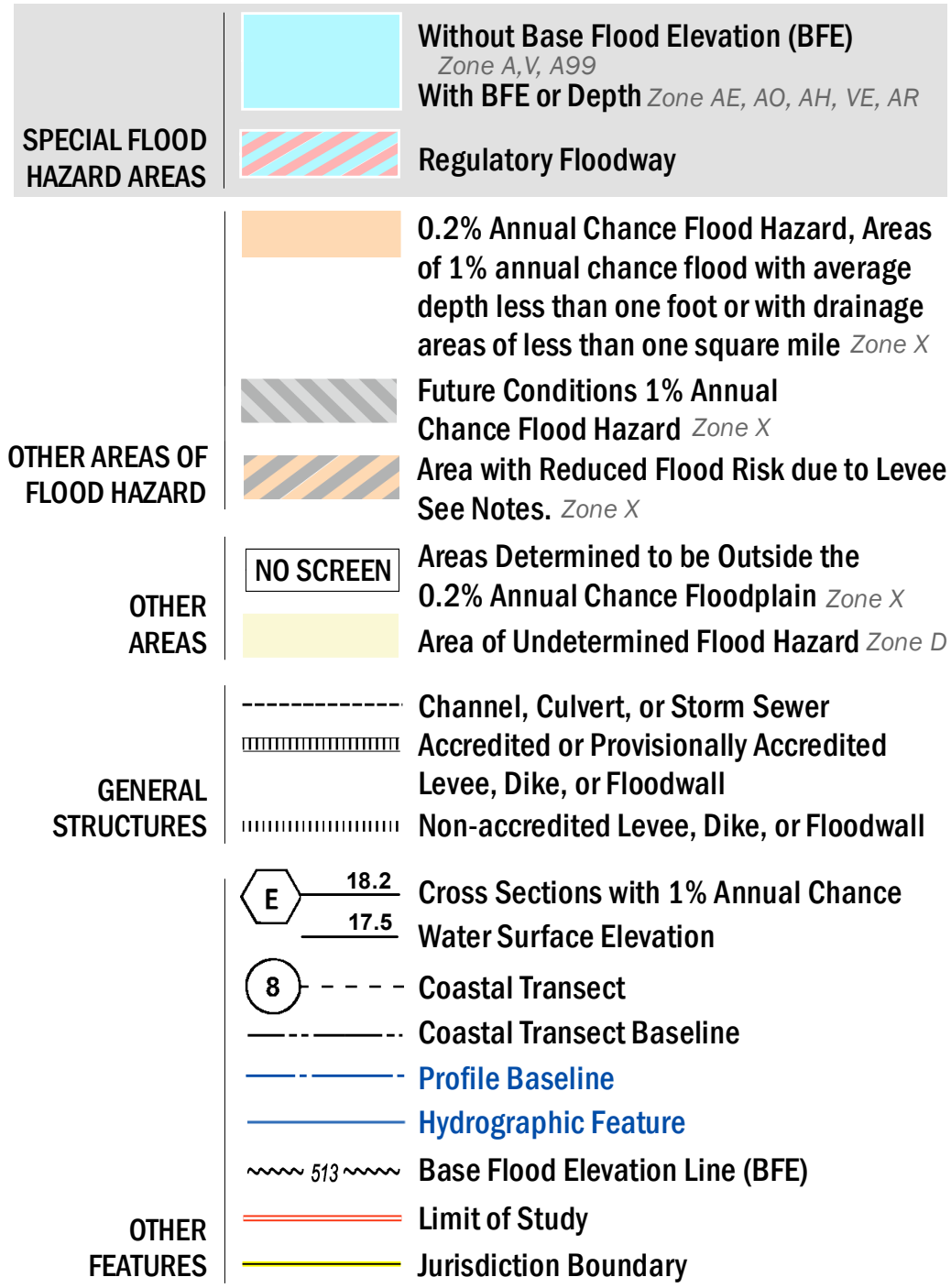


FLOOD HAZARD INFORMATION

SEE FIS REPORT FOR ZONE DESCRIPTIONS AND INDEX MAP
THE INFORMATION DEPICTED ON THIS MAP AND SUPPORTING DOCUMENTATION ARE ALSO AVAILABLE IN DIGITAL FORMAT AT [HTTP://MSC.FEMA.GOV](http://msc.fema.gov)



NOTES TO USERS

For information and questions about this map, available products associated with this FIRM including historic versions of this FIRM, how to order products or the National Flood Insurance Program in general, please call the FEMA Map Information Exchange at 1-877-FEMA-MAP (1-877-336-2627) or visit the FEMA Map Service Center website at <http://msc.fema.gov>. Available products may include previously issued Letters of Map Change, a Flood Insurance Study Report, and/or digital versions of this map. Many of these products can be ordered or obtained directly from the website. Users may determine the current map date for each FIRM panel by visiting the FEMA Map Service Center website or by calling the FEMA Map Information eXchange.

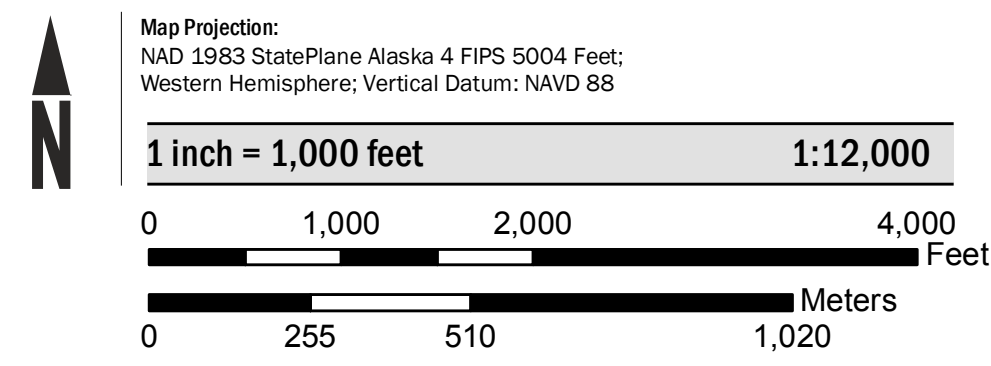
Communities annexing land on adjacent FIRM panels must obtain a current copy of the adjacent panel as well as the current FIRM Index. These may be ordered directly from the Map Service Center at the number listed above.

For community and countywide map dates refer to the Flood Insurance Study report for this jurisdiction.

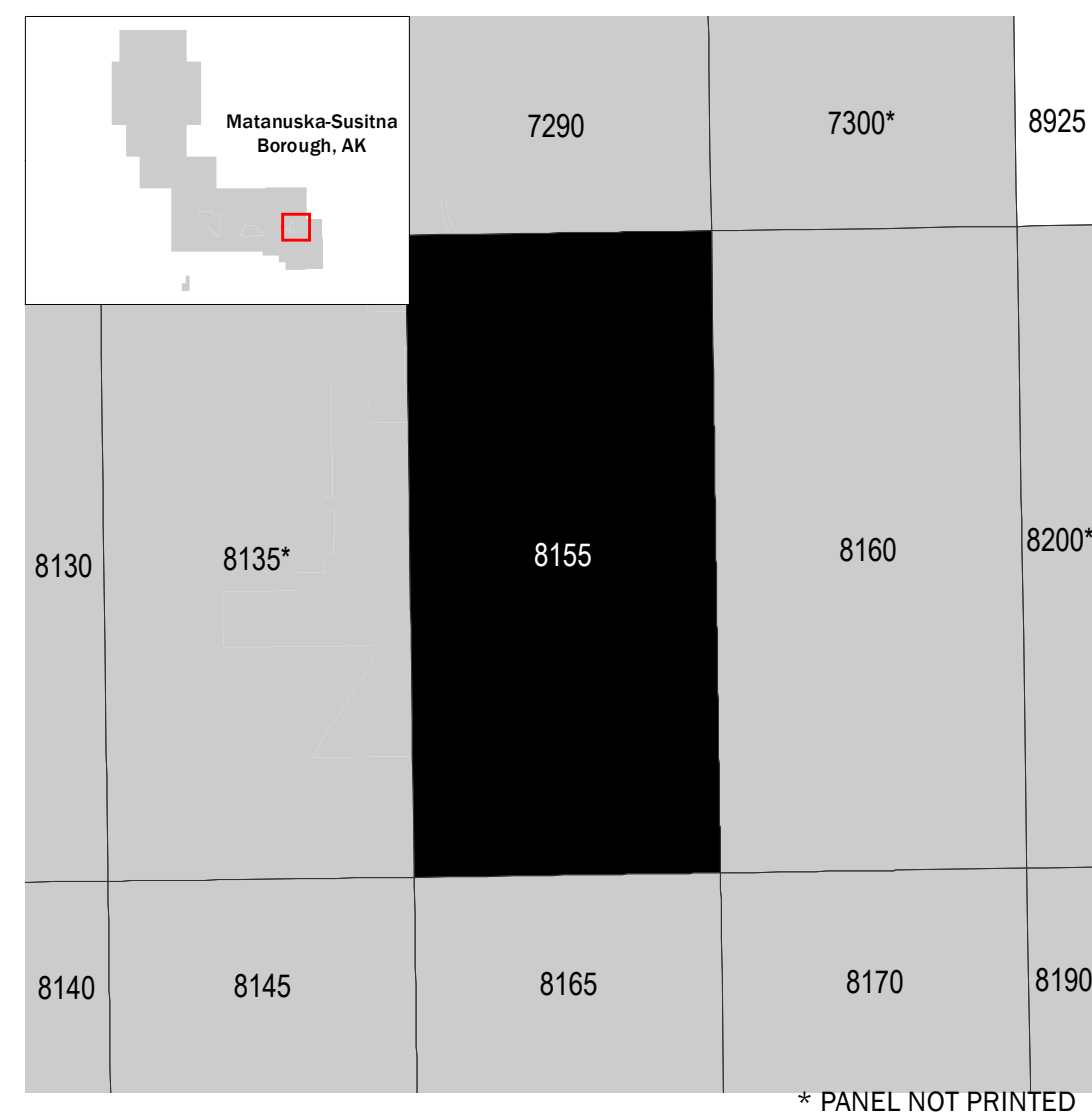
To determine if flood insurance is available in the community, contact your insurance agent or call the National Flood Insurance Program at 1-800-638-6620.

Base map information shown on this FIRM was provided in digital format by the United States Geological Survey (USGS), Matanuska-Susitna Borough GIS Department, Alaska State Geo-Spatial Data Clearinghouse, and Alaska Department of Natural Resources. Other information was derived from digital orthophotography at a 2-foot resolution from photography dated 2011.

SCALE



PANEL LOCATOR



**NATIONAL FLOOD INSURANCE PROGRAM
 FLOOD INSURANCE RATE MAP**

MATANUSKA-SUSITNA BOROUGH, AK
 and Incorporated Areas

PANEL 8155 of 9855

Panel Contains:

COMMUNITY	NUMBER	PANEL	SUFFIX
MATANUSKA-SUSITNA BOROUGH	020021	8155	F
PALMER, CITY OF	020023	8155	F

PRELIMINARY
 8/19/2016

VERSION NUMBER
2.3.3.2

MAP NUMBER
02170C8155F

MAP REVISED