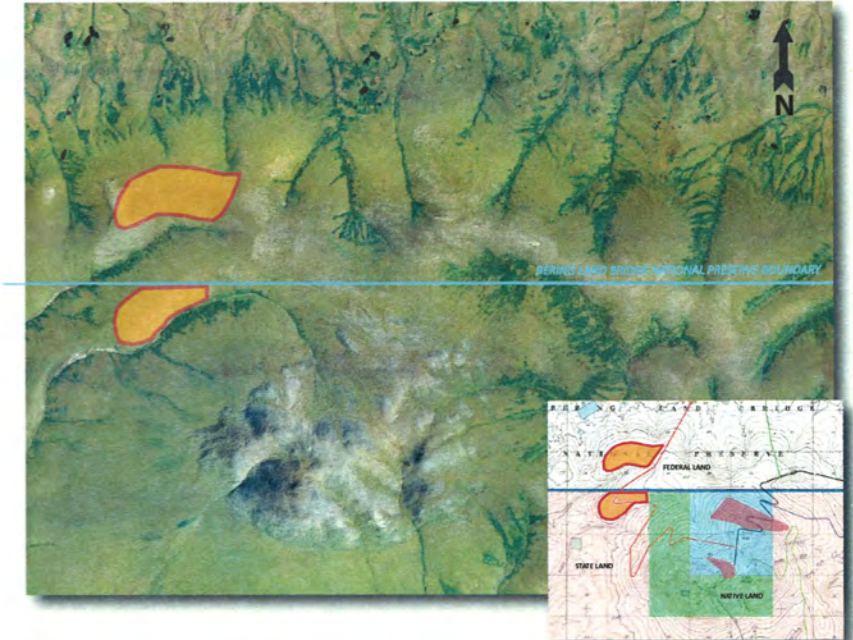
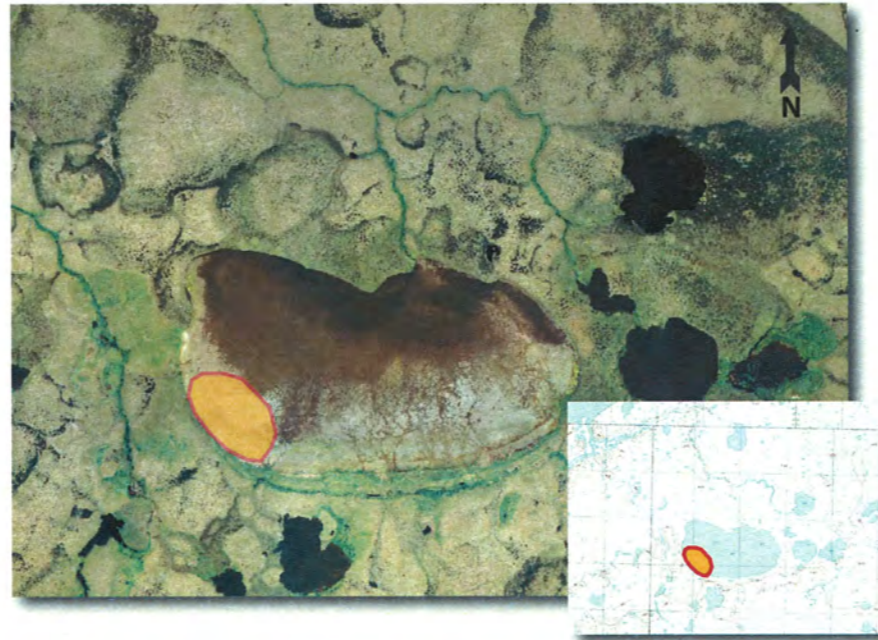
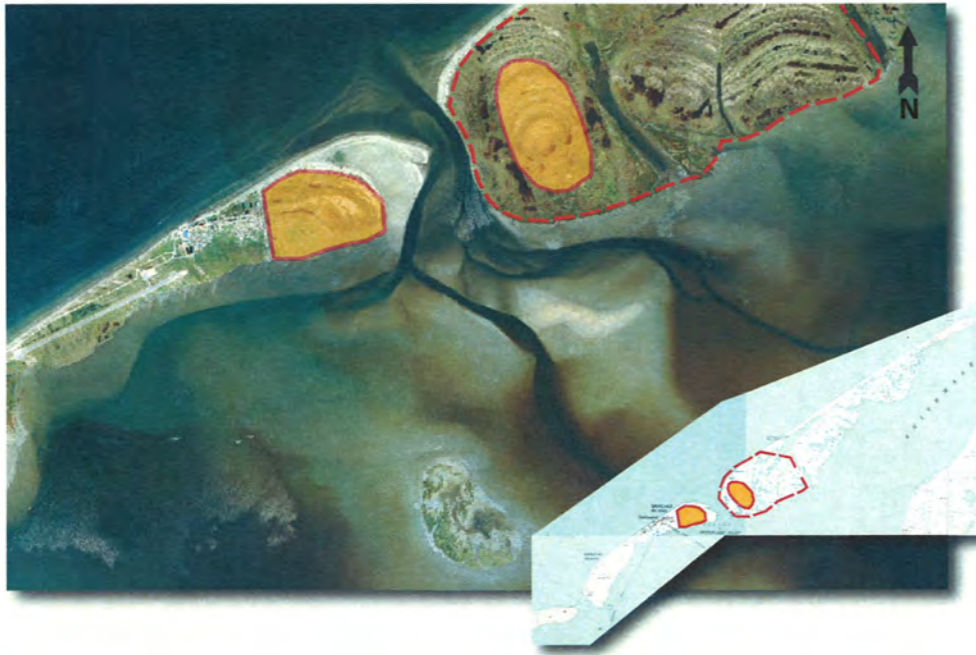


REMAINING CANDIDATE SITES

SHISHMAREF RELOCATION STUDY



* SHISHMAREF & NE BARRIER ISLAND

FACTS

- 0-2 miles from barge access
- 0-2 miles from Shishmaref
- On Native Corporation land

ADVANTAGES

- Continued use of existing community
- Expansion potential on NE Island
- Can start community improvements much sooner
- No pioneer relocation needed
- Not dependent on road crossing National Preserve

DISADVANTAGES

- Requires additional rock for erosion protection
- Involves ongoing maintenance costs for erosion protection
- Requires water supply and waste disposal solutions

STUDIES/RESEARCH NEEDED

- Sediment Transport Summer 2012/DGGS
- Coastal Hazards Summer 2012/DGGS
- Bathymetry around Island Summer 2012/DGGS

* OLD POND (DRY LAKE)

FACTS

- 6.5 miles from barge landing
- 13.5 miles from Shishmaref
- On BLM land

ADVANTAGES

- Not exposed to coastal erosion
- Not too far from coast

DISADVANTAGES

- Requires large quantities of gravel fill
- Dependent on road crossing National Preserve for fill material
- Requires federal land exchange
- Unknown water supply
- No direct boat access
- Exposed to standing water and insects in summer

STUDIES/RESEARCH NEEDED

- Geotechnical Drilling Timing undetermined
- Bathymetry for barge landing Summer 2012/DGGS

* EAR MOUNTAIN

FACTS

- 15 miles from barge landing
- 22 miles from Shishmaref
- On National Preserve or State land

ADVANTAGES

- Not exposed to coastal erosion
- Good constructability
- Well drained

DISADVANTAGES

- Flat land is outside native corporation ownership
- Dependent on road crossing National Preserve for barge/airstrip access
- Requires federal or state land exchange
- Unknown water supply
- Site is far from coast
- No direct boat access

STUDIES/RESEARCH NEEDED

- Bathymetry for barge landing Summer 2012/DGGS