



Approved Marijuana Products

Einstein Labs – 10082
2939 Porcupine Drive Suite B
Anchorage, AK 99501

Alcohol and Marijuana Control Office
550 W 7th Avenue, Suite 1600
Anchorage, AK 99501

marijuana.licensing@alaska.gov
<https://www.commerce.alaska.gov/web/amco>

Phone: 907.269.0350

Contents

Amberglass	2
Budder	4
Bubble Hash	6
Cannabis Oil.....	8
Canna Island Lip Balm	10
Canna Rocks	12
Caviar Joint	14
Caviar Nugs.....	16
Chocolate Chip Cookie Bites.....	18
Crumble	20
E-Blunt Vape Pen & Oil.....	22
Einstein Melts – Milk Chocolate.....	24
Honeycomb	26
Kief.....	28
Leaf Chews	30
Mini Truffles	37
Moisturizing Cannabis Lotion.....	39
Refreshing Cannabis Salve.....	41
Rosin	43
Shatter.....	45
Sugar Sap.....	47
Sugar Silk	49
The Clear	51
Tincture	53
Wake and Bake Energy Drink.....	55



Approved Marijuana Products

Einstein Labs – 10082
2939 Porcupine Drive Suite B
Anchorage, AK 99501

Alcohol and Marijuana Control Office
550 W 7th Avenue, Suite 1600
Anchorage, AK 99501

marijuana.licensing@alaska.gov
<https://www.commerce.alaska.gov/web/amco>

Phone: 907.269.0350

Amberglass

Type:	Concentrate
Product Description:	Amberglass has a smooth, glass like texture that is hard & brittle when cold (shatters when broken apart) and has the consistency and appearance of honey when warm. Color ranges from yellow to amber. Comes in a variety of strains with varying THC & CBD levels. Used for inhalation, making edibles and topicals.
Packaging:	Cannabis oil is extracted in a closed loop machine using flower or trim with one of the following solvents; Butane, N-Butane, Isa-Butane (or combination of) or Ethanol. The solution is strained & purged to remove all plant matter and remove solvents to below regulated ranges (3 AAC 306.645) from the product. The concentrated oil is placed in a vacuum at a warm temperature for approximately 5-6 days to complete the manufacturing Process.

Product Depiction:





Approved Marijuana Products

Einstein Labs – 10082
2939 Porcupine Drive Suite B
Anchorage, AK 99501

Alcohol and Marijuana Control Office
550 W 7th Avenue, Suite 1600

Anchorage, AK 99501

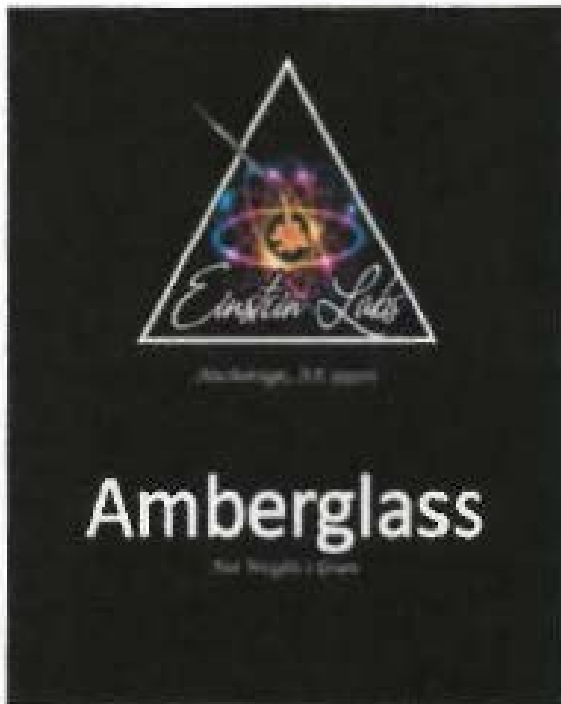
marijuana.licensing@alaska.gov

<https://www.commerce.alaska.gov/web/amco>

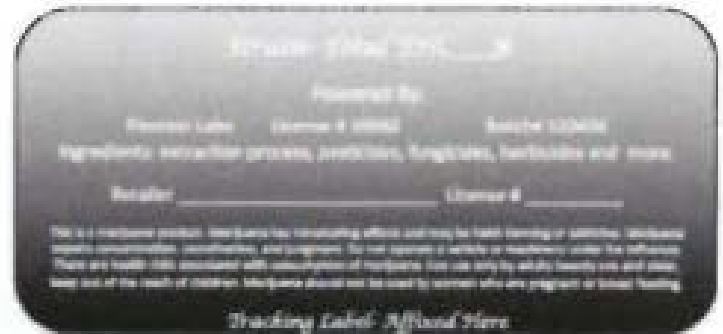
Phone: 907.269.0350



Front of Package



Back of Package





Approved Marijuana Products

Einstein Labs – 10082
2939 Porcupine Drive Suite B
Anchorage, AK 99501

Alcohol and Marijuana Control Office
550 W 7th Avenue, Suite 1600
Anchorage, AK 99501

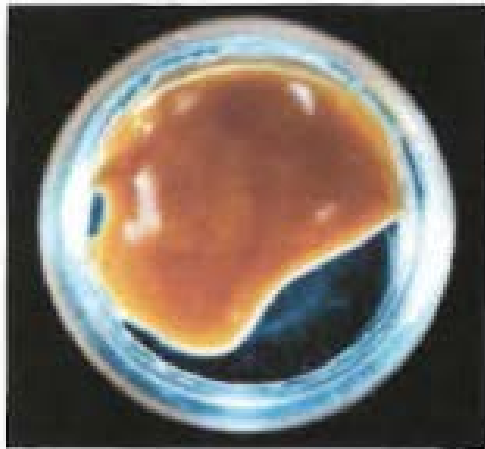
marijuana.licensing@alaska.gov
<https://www.commerce.alaska.gov/web/amco>

Phone: 907.269.0350

Budder

Type:	Concentrate, Cannabis Wax
Product Description:	Budder has a waxy appearance and comes in amber to golden yellow color. Budder is soft and pliable and has a creamy consistency. Budder comes in a variety of strains and varying THC & CBD levels. Estimated expiration date is eight (8) to twelve (12) months. Used for inhalation.
Packaging:	Packaging consists of non-toxic, opaque, black or white mylar with an optional clear back to show product. Bags range from 3" x 4.5" (1 gram, not to be repackaged) to 14 3/5" x 16 3/7" x 6" (1 pound wholesale) bags. Wholesale bags will increase in half (1/2) ounce increments up to one (1) pound. The designated amount of Budder will be packaged in a glass/plastic container or parchment paper and then placed in the bag. Total THC per product will range 40-99%.

Product Depiction:





Approved Marijuana Products

Einstein Labs – 10082
2939 Porcupine Drive Suite B
Anchorage, AK 99501

Alcohol and Marijuana Control Office
550 W 7th Avenue, Suite 1600

Anchorage, AK 99501

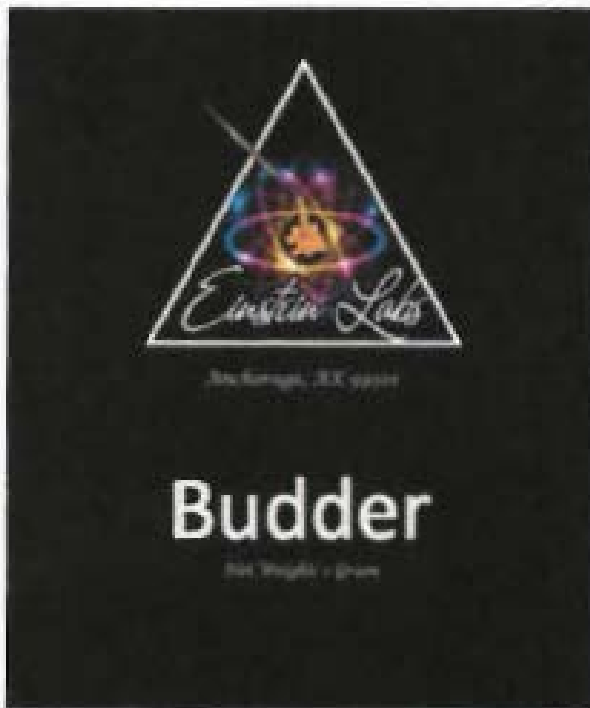
marijuana.licensing@alaska.gov

<https://www.commerce.alaska.gov/web/amco>

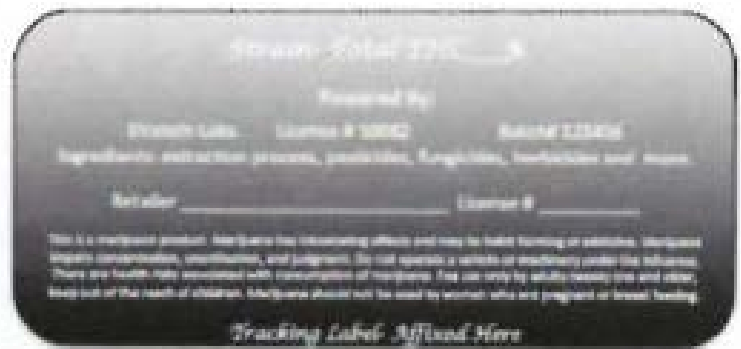
Phone: 907.269.0350



Front of Package



Back of Package





Approved Marijuana Products

Einstein Labs – 10082
2939 Porcupine Drive Suite B
Anchorage, AK 99501

Alcohol and Marijuana Control Office
550 W 7th Avenue, Suite 1600
Anchorage, AK 99501

marijuana.licensing@alaska.gov
<https://www.commerce.alaska.gov/web/amco>
Phone: 907.269.0350

Bubble Hash

Type:	Concentrate
Product Description:	Bubble hash is granular and crumbly by nature with a light tan color. Bubble hash breaks up easily, is usually not sticky but will stick together when pressed firmly. Comes in a variety of strains with varying TCH & CBD levels. Used for inhalation.
Packaging:	Packaging consists of non-toxic, opaque, black or white mylar with an optional clear back to show product. Bags range from 3" x 4.5" (1 gram, not to be repackaged) to 14 3/5" x 16 3/7" x 6" (1 pound wholesale) bags. Wholesale bags will increase in half (1/2) ounce increments up to one (1) pound. The designated amount of Bubble Hash will be packaged in a glass/plastic container or in parchment paper and then placed in the bag. Total THC per product will range 40-99%.

Product Depiction:

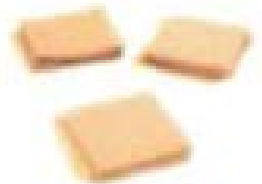




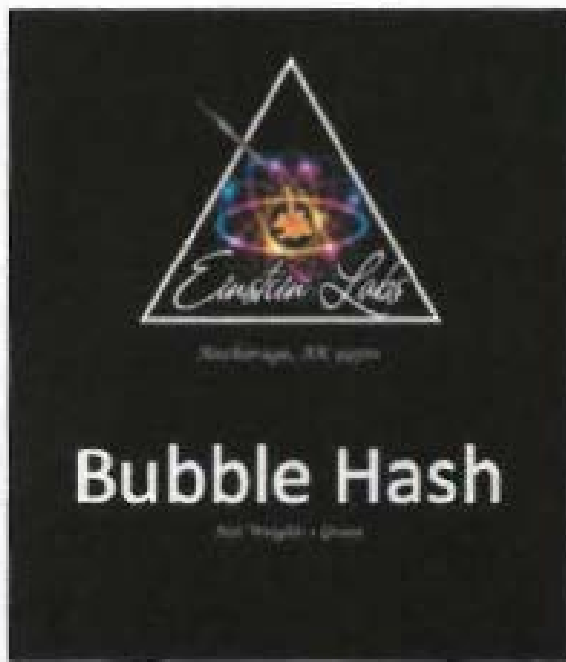
Approved Marijuana Products

Einstein Labs – 10082
2939 Porcupine Drive Suite B
Anchorage, AK 99501

Alcohol and Marijuana Control Office
550 W 7th Avenue, Suite 1600
Anchorage, AK 99501
marijuana.licensing@alaska.gov
<https://www.commerce.alaska.gov/web/amco>
Phone: 907.269.0350



Front of Package



Back of Package





Approved Marijuana Products

Einstein Labs – 10082

2939 Porcupine Drive Suite B

Anchorage, AK 99501

Alcohol and Marijuana Control Office

550 W 7th Avenue, Suite 1600

Anchorage, AK 99501

marijuana.licensing@alaska.gov

<https://www.commerce.alaska.gov/web/amco>

Phone: 907.269.0350

Cannabis Oil

Type:	Concentrate
Product Description:	Cannabis oil is a translucent oil that ranges in color from amber to golden yellow. It has a shiny sheen and oily texture. May be strain specific and come in varying combinations of THC & CBD levels. Estimated expiration date when stored in the refrigerator is one (1) year. Will be used to make edible, topical & concentrate creations as well as for wholesale sale.
Packaging:	Packaging consists of non-toxic, opaque, black or white mylar with an optional clear back to show product. Bags range from 3" x 4.5" (1 gram, not to be repackaged) to 14 3/5" x 16 3/7" x 6" (1 pound wholesale) bags. Wholesale bags will increase in half (1/2) ounce increments up to one (1) pound. The designated amount of Cannabis Oil will be packaged in a glass/plastic container and then placed in the bag. Syringe packaging will hold .5g-1.5g per vessel and be placed in a 2.5" x 9" mylar bag (black or white, optional clear back) not to be repackaged by retail stores. Total THC per product will range 40-99%.

Product Depiction:





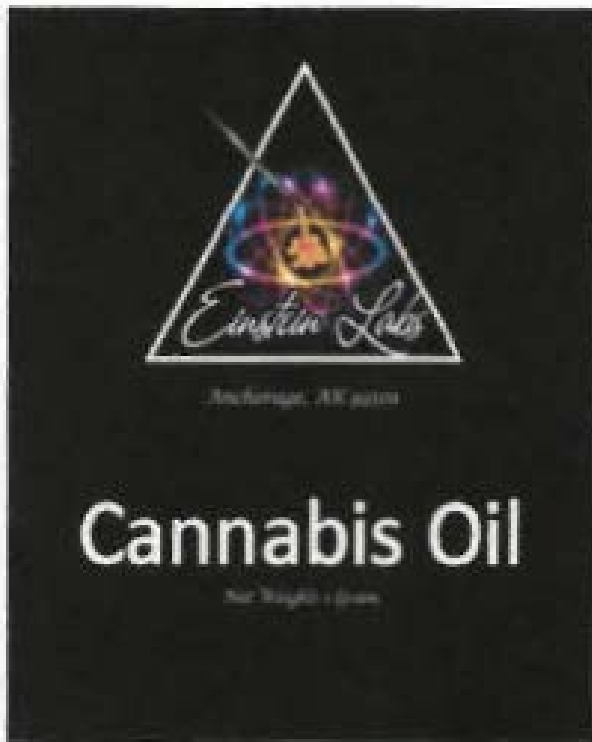
Approved Marijuana Products

Einstein Labs – 10082
2939 Porcupine Drive Suite B
Anchorage, AK 99501

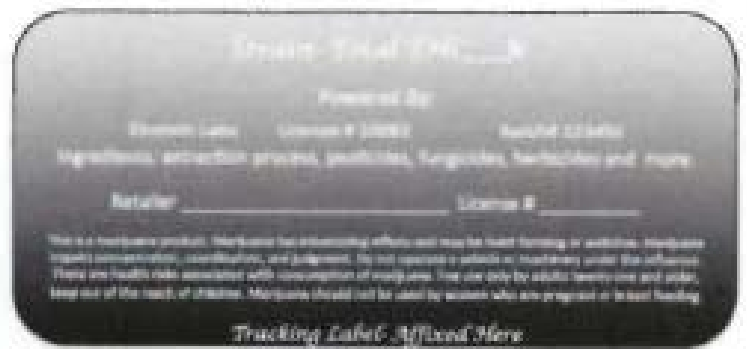
Alcohol and Marijuana Control Office
550 W 7th Avenue, Suite 1600
Anchorage, AK 99501
marijuana.licensing@alaska.gov
<https://www.commerce.alaska.gov/web/amco>
Phone: 907.269.0350



Front of Package



Back of Package





Approved Marijuana Products

Einstein Labs – 10082
2939 Porcupine Drive Suite B
Anchorage, AK 99501

Alcohol and Marijuana Control Office
550 W 7th Avenue, Suite 1600
Anchorage, AK 99501

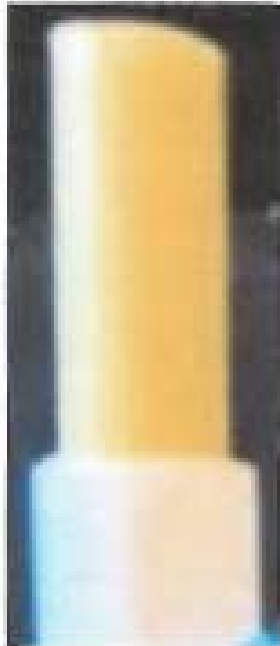
marijuana.licensing@alaska.gov
<https://www.commerce.alaska.gov/web/amco>

Phone: 907.269.0350

Canna Island Lip Balm

Type:	Topical
Product Description:	Canna Island Lip Balm is a wax-like substance applied topically to the lip to moisturize and relieve chapped or dry lips. The lip balm has a light golden opaque color and formed into a cylindrical shape in order to fit into a lip balm tube. Canna Island Lip Balm is infused with pineapple and coconut essential oils to enhance the smell of the lip balm. Used for topical application. 5mg serving in each lip balm tube.
Packaging:	Lip balm will be packaged in white or black tubes approximately 2.8" x .6" x .6", holding 0.5ml of balm. Tubes will be made out of plastic and the total package will contain 5mg or less of THC.

Product Depiction:





Approved Marijuana Products

Einstein Labs – 10082
2939 Porcupine Drive Suite B
Anchorage, AK 99501

Alcohol and Marijuana Control Office
550 W 7th Avenue, Suite 1600

Anchorage, AK 99501

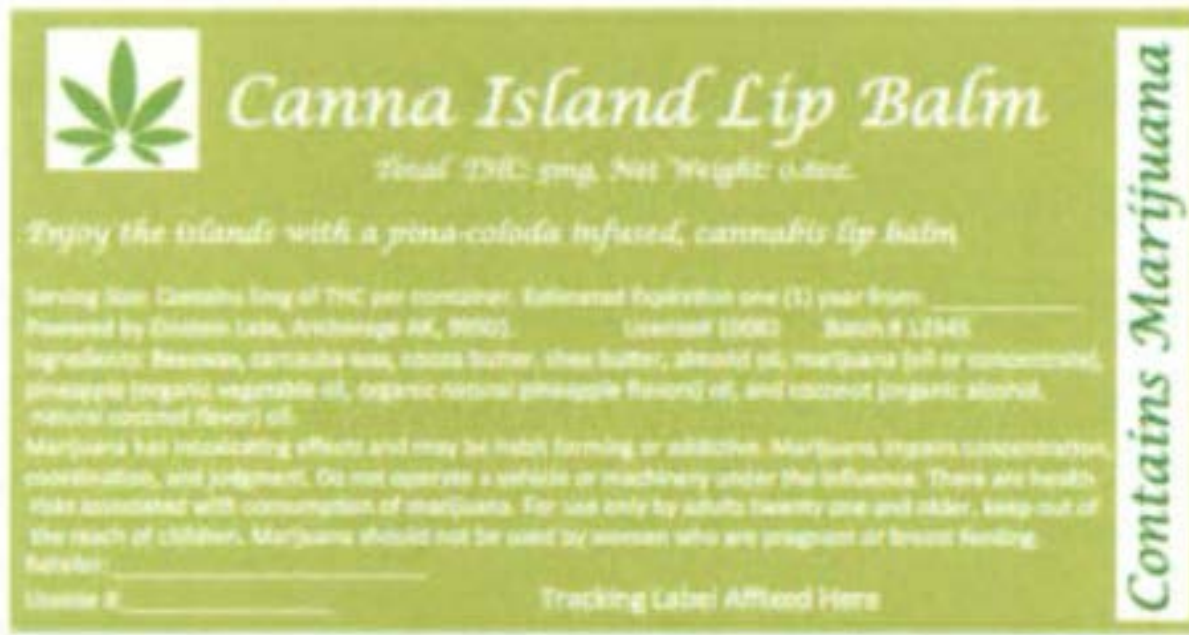
marijuana.licensing@alaska.gov

<https://www.commerce.alaska.gov/web/amco>

Phone: 907.269.0350



Label will wrap around the container





Approved Marijuana Products

Einstein Labs – 10082

2939 Porcupine Drive Suite B

Anchorage, AK 99501

Alcohol and Marijuana Control Office

550 W 7th Avenue, Suite 1600

Anchorage, AK 99501

marijuana.licensing@alaska.gov

<https://www.commerce.alaska.gov/web/amco>

Phone: 907.269.0350

Canna Rocks

Type:	Marijuana Edible, Hard Candy (Cherry, Strawberry, Watermelon flavors)
Product Description:	Canna Rocks consist of flavored (Cherry, Strawberry, Watermelon), hard candy that is approximately 3/4" in diameter by 1/2" in height. Each individual serving will contain 4-6mg of THC, totaling 50mg for the entire package. Each candy is green in color. Brittle, transparent.
Packaging:	Canna Rocks hard candy is packaged in an opaque, child resistant, plastic and cardboard package that contains 10 individual servings, each containing 5mg of THC per serving, 50 mg total per container. Containers will be white or black and are approximately 2 1/2' x 7" x 3/4'.

Product Depiction:





Approved Marijuana Products

Einstein Labs – 10082
 2939 Porcupine Drive Suite B
 Anchorage, AK 99501

Alcohol and Marijuana Control Office
 550 W 7th Avenue, Suite 1600

Anchorage, AK 99501

marijuana.licensing@alaska.gov

<https://www.commerce.alaska.gov/web/amco>

Phone: 907.269.0350



Top of Package



Bottom of Package (Nutritional Label if Applicable)

Nutrition Facts

(Note: The image is very blurry and the text is illegible.)





Approved Marijuana Products

Einstein Labs – 10082

2939 Porcupine Drive Suite B

Anchorage, AK 99501

Alcohol and Marijuana Control Office

550 W 7th Avenue, Suite 1600

Anchorage, AK 99501

marijuana.licensing@alaska.gov

<https://www.commerce.alaska.gov/web/amco>

Phone: 907.269.0350

Caviar Joint

Type:	Concentrate (kief, cannabis oil) covered marijuana flower joint
Product Description:	Caviar Joints have the traditional shape of a joint and come wrapped in a smokable rolling paper. The joint has a powder like coating of kief around it and range in color from light green to golden yellow. The joint is dense and feels granular and sticky from the kief and oil layer. Estimated expiration date is six (6) months.
Packaging:	Each joint will be placed in a green, white or black plastic, child-resistant joint tube and will have all required labels and warnings as applicable in 3 AAC 306.475. Sample caviar joint packaging below: One (1) to three (3) gram capacity, RAW organic joint cone (or comparable) Opaque Child Resistant Line-Up Plastic Joint Tube 98mm-109mm (or similar)

Product Depiction:





Approved Marijuana Products

Einstein Labs – 10082
2939 Porcupine Drive Suite B
Anchorage, AK 99501

Alcohol and Marijuana Control Office
550 W 7th Avenue, Suite 1600

Anchorage, AK 99501

marijuana.licensing@alaska.gov

<https://www.commerce.alaska.gov/web/amco>

Phone: 907.269.0350



Packaging Label
(will wrap around the tube)





Approved Marijuana Products

Einstein Labs – 10082

2939 Porcupine Drive Suite B

Anchorage, AK 99501

Alcohol and Marijuana Control Office

550 W 7th Avenue, Suite 1600

Anchorage, AK 99501

marijuana.licensing@alaska.gov

<https://www.commerce.alaska.gov/web/amco>

Phone: 907.269.0350

Caviar Nugs

Type:	Concentrate (kief, cannabis oil) covered marijuana bud
Product Description:	Caviar Nugs will be variable in size dependent on the flower (bud) sizes obtained from the cultivation facility. The nug will have a powder like coating of kief and range in color from light green to golden yellow. The nug is dense and feels granular from the kief layer.
Packaging:	Caviar nugs will be packaged in non-toxic, opaque, black or white mylar bags with an optional clear back to show product. Product will be packaged in the following bag sizes (or comparable) based on weight: 1Gram- 3" x 4.5" bag 3.5 Grams- 3.62" x 5" x 1.5" bag 7 Grams- 4" x 6.5" x 1.78" bag 14 Grams- 5" x 8.14" x 2.33" bag 28 Grams- 6" x 9.25" x 2.33" bag

Product Depiction:





Approved Marijuana Products

Einstein Labs – 10082
2939 Porcupine Drive Suite B
Anchorage, AK 99501

Alcohol and Marijuana Control Office
550 W 7th Avenue, Suite 1600

Anchorage, AK 99501

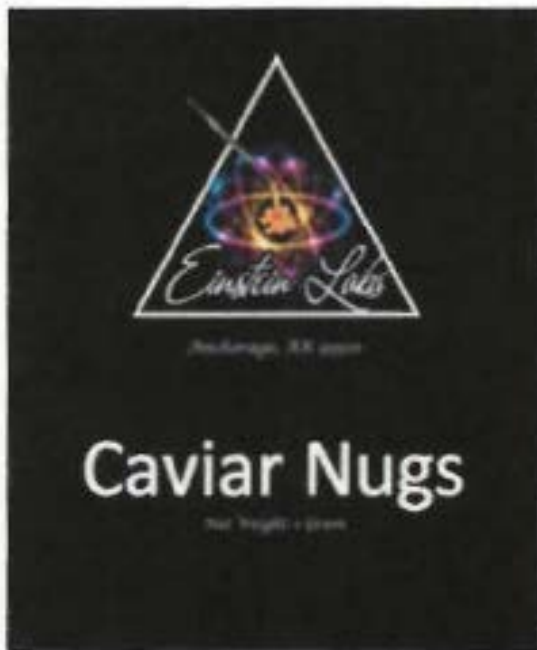
marijuana.licensing@alaska.gov

<https://www.commerce.alaska.gov/web/amco>

Phone: 907.269.0350



Front of Package



Back of Package





Approved Marijuana Products

Einstein Labs – 10082
2939 Porcupine Drive Suite B
Anchorage, AK 99501

Alcohol and Marijuana Control Office
550 W 7th Avenue, Suite 1600

Anchorage, AK 99501

marijuana.licensing@alaska.gov

<https://www.commerce.alaska.gov/web/amco>

Phone: 907.269.0350

Chocolate Chip Cookie Bites

Type:	Edible
Product Description:	Chocolate chip cookie bites consist of ten (10), single serving, chocolate chip cookies, each containing 4-6mg of THC, totaling 50mg for the entire package. Each cookie is golden in color, with brown spots, flat, rough in texture and can be either hard or soft. Each cookie is approximately 1" in diameter 1/4" in height.
Packaging:	Chocolate Chip Cookie Bites will be packaged in a food grade container with a plastic lid and bottom (will be opaque as necessary to meet regulations)*. The plastic container is approximately 6' x 2" x 1/2". Each container contains ten (10) individual servings of cookie, each containing 5mg of THC per serving, 50 mg total per container. * If necessary to conform to regulations and packaging needs to be opaque, green, food grade wrapping paper will line the lid to conceal the product.

Product Depiction:





Approved Marijuana Products

Einstein Labs – 10082
 2939 Porcupine Drive Suite B
 Anchorage, AK 99501

Alcohol and Marijuana Control Office
 550 W 7th Avenue, Suite 1600

Anchorage, AK 99501

marijuana.licensing@alaska.gov

<https://www.commerce.alaska.gov/web/amco>

Phone: 907.269.0350



Top of Package

Bottom of package (Nutritional Label as Applicable)



Approved Marijuana Products

Einstein Labs – 10082

2939 Porcupine Drive Suite B

Anchorage, AK 99501

Alcohol and Marijuana Control Office

550 W 7th Avenue, Suite 1600

Anchorage, AK 99501

marijuana.licensing@alaska.gov

<https://www.commerce.alaska.gov/web/amco>

Phone: 907.269.0350

Crumble

Type:	Concentrate
Product Description:	Crumble has an opaque appearance and comes in an amber to golden yellow color. Crumble has a soft yet brittle consistency that crumbles when you touch it. Crumble comes in a variety of strains and varying THC & CBD levels. Estimated expiration date is eight (8) to twelve (12) months. Used for inhalation.
Packaging:	Packaging consists of nontoxic, opaque, black or white mylar with an optional clear back to show product. Bags range from 3" x 4.5" (1 gram, not to be repackaged) to 14 3/5" x 16 3/7" x 6" (1 pound wholesale) bags. Wholesale bags will increase in half (1/2) ounce increments up to one (1) pound. The designated amount of Crumble will be packaged in a glass/plastic container or parchment paper and then placed in the bag. Total THC per product will range 40-99%.

Product Depiction:





Approved Marijuana Products

Einstein Labs – 10082
2939 Porcupine Drive Suite B
Anchorage, AK 99501

Alcohol and Marijuana Control Office
550 W 7th Avenue, Suite 1600

Anchorage, AK 99501

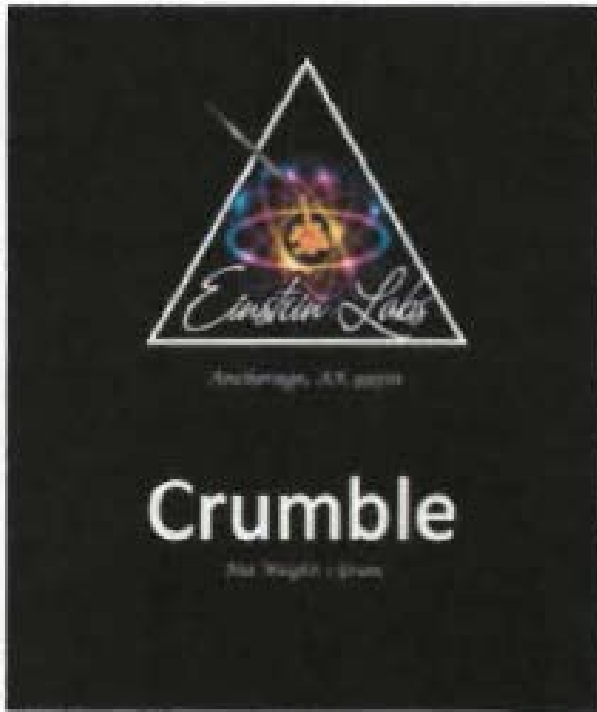
marijuana.licensing@alaska.gov

<https://www.commerce.alaska.gov/web/amco>

Phone: 907.269.0350



Front of Package



Back of Package





Approved Marijuana Products

Einstein Labs – 10082
2939 Porcupine Drive Suite B
Anchorage, AK 99501

Alcohol and Marijuana Control Office
550 W 7th Avenue, Suite 1600

Anchorage, AK 99501

marijuana.licensing@alaska.gov

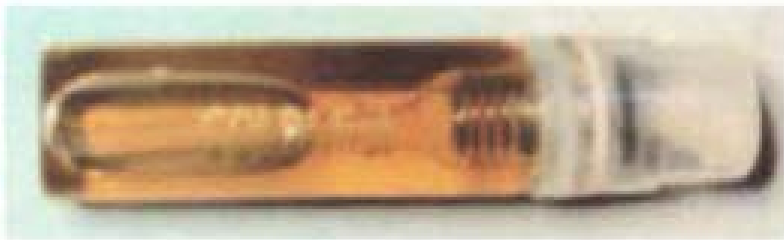
<https://www.commerce.alaska.gov/web/amco>

Phone: 907.269.0350

E-Blunt Vape Pen & Oil

Type:	Concentrate
Product Description:	Vape Pen Oil appear as golden amber to yellow liquid that is transparent by nature. The liquid takes on the shape of the container it is placed in and has a consistency similar to oil. Vape Pen Oil will come in a variety of strains and flavors with differing THC and CBD levels. Used for inhalation. Product will be placed in vape pens and vape pen cartridges.
Packaging:	Packaging will consist of E Blunt recognized vape pens and accessories {below} : E-Blunt Slim; vape pen, charger, & vial. 2 1/4" x 1" x 7 3/4" plastic & cardboard packaging. Pen= .5-lg, Vial= .5-lg E-Blunt Stogie; cigar style vape pen, disposable. 11/4" x 1" x 9" plastic & cardboard packaging. Pen= 1-2g E-Blunt Mini; mini cigar style vape pen, disposable. 3 3/4" x 5 1/2", plastic & cardboard packaging. Pen= .25g-lg E-Blunt Flavored Oil Refill; vape pen cartridge tip & vial. 3 1/2" x 4 3/4", plastic & cardboard packaging. Pen/ Vial= .125g-1.Sg. Each product has E Blunt Facts on the back along with the required labels (including flavor & strain (If applicable)).

Product Depiction:





Approved Marijuana Products

Einstein Labs – 10082
2939 Porcupine Drive Suite B
Anchorage, AK 99501

Alcohol and Marijuana Control Office
550 W 7th Avenue, Suite 1600

Anchorage, AK 99501

marijuana.licensing@alaska.gov

<https://www.commerce.alaska.gov/web/amco>

Phone: 907.269.0350

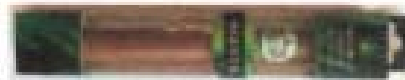
Slim



Mini



Stogie



Refill



The following label will be affixed to the back of the packaging and will be the same for each product listed above:





Approved Marijuana Products

Einstein Labs – 10082
2939 Porcupine Drive Suite B
Anchorage, AK 99501

Alcohol and Marijuana Control Office
550 W 7th Avenue, Suite 1600
Anchorage, AK 99501

marijuana.licensing@alaska.gov
<https://www.commerce.alaska.gov/web/amco>

Phone: 907.269.0350

Einstein Melts – Milk Chocolate

Type:	Marijuana Edible
Product Description:	Einstein Melts consist of ten (10), single serving, milk chocolate balls, each containing 4-6mg of THC, totaling 50mg for the entire package. The chocolate melt has a smooth texture that gets creamy and soft as it warms with a light brown color. Each melt is approximately 3/4" in diameter 1/2" in height.
Packaging:	Einstein Melts hard candy is packaged in an opaque, child resistant, plastic and cardboard package that contains ten (10) individual servings, each containing 5mg of THC per serving, 50 mg total per container. Containers will be white or black and are approximately 2 1/2' x 7" x 3/4'.

Product Depiction:





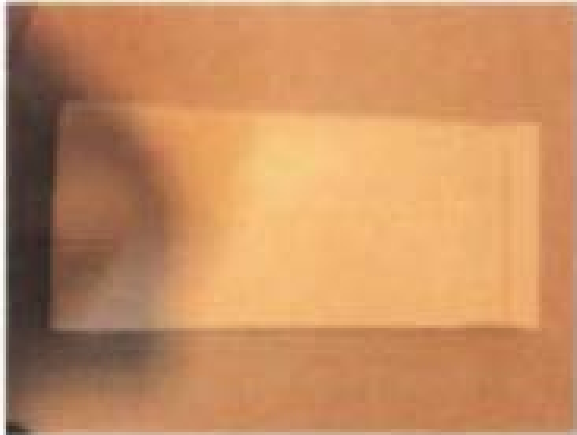
Approved Marijuana Products

Einstein Labs – 10082
 2939 Porcupine Drive Suite B
 Anchorage, AK 99501

Alcohol and Marijuana Control Office
 550 W 7th Avenue, Suite 1600
 Anchorage, AK 99501

marijuana.licensing@alaska.gov
<https://www.commerce.alaska.gov/web/amco>

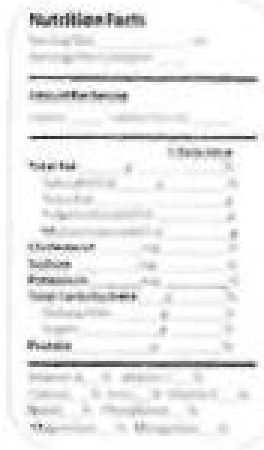
Phone: 907.269.0350



Front of Package



Back of Package
 (Nutritional
 Label if
 Applicable)





Approved Marijuana Products

Einstein Labs – 10082

2939 Porcupine Drive Suite B

Anchorage, AK 99501

Alcohol and Marijuana Control Office

550 W 7th Avenue, Suite 1600

Anchorage, AK 99501

marijuana.licensing@alaska.gov

<https://www.commerce.alaska.gov/web/amco>

Phone: 907.269.0350

Honeycomb

Type:	Concentrate, Cannabis Wax
Product Description:	Honeycomb has a waxy appearance and comes in an amber to golden yellow color. Honeycomb is soft and pliable and has a creamy consistency. Honeycomb comes in a variety of strains and varying THC & CBD levels. Estimated expiration date is eight (8) to twelve (12) months. Used for inhalation.
Packaging:	Packaging consists of non-toxic, opaque, black or white mylar with an optional clear back to show product. Bags range from 3" x 4.5" (1 gram, not to be repackaged) to 14 3/5" x 16 3/7" x 6" (1 pound wholesale) bags. Wholesale bags will increase in half (1/2) ounce increments up to one (1) pound. The designated amount of Honeycomb will be packaged in a glass/plastic container or parchment paper and then placed in the bag. Total THC per product will range 40-99%.

Product Depiction:





Approved Marijuana Products

Einstein Labs – 10082
2939 Porcupine Drive Suite B
Anchorage, AK 99501

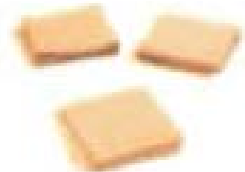
Alcohol and Marijuana Control Office
550 W 7th Avenue, Suite 1600

Anchorage, AK 99501

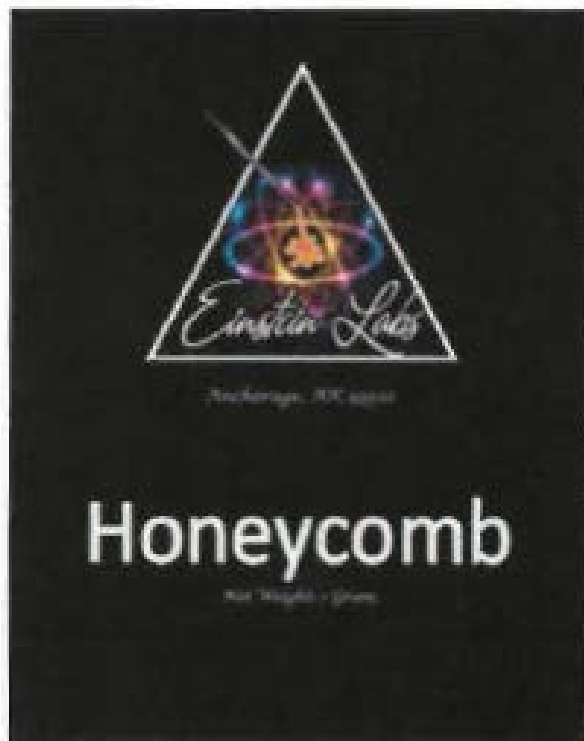
marijuana.licensing@alaska.gov

<https://www.commerce.alaska.gov/web/amco>

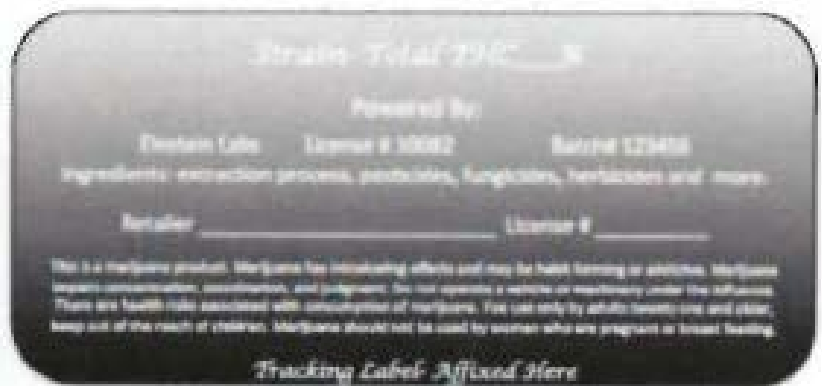
Phone: 907.269.0350



Front of Package



Back of Package





Approved Marijuana Products

Einstein Labs – 10082
2939 Porcupine Drive Suite B
Anchorage, AK 99501

Alcohol and Marijuana Control Office
550 W 7th Avenue, Suite 1600
Anchorage, AK 99501

marijuana.licensing@alaska.gov
<https://www.commerce.alaska.gov/web/amco>

Phone: 907.269.0350

Kief

Type:	Concentrate
Product Description:	Kief ranges from having a delicate powder like texture and appearance to a soft, compact brick texture and appearance. Kief ranges in color from a light green to a golden yellow. Kief may be strain specific with varying THC and CBD levels. Used for inhalation. Estimated expiration date is one (1) year.
Packaging:	Packaging consists of non-toxic, opaque, black or white mylar with an optional clear back to show product. Bags range from 3" x 4.5" (1 gram, not to be repackaged) to 14 3/5" x 16 3/7" x 6" (1 pound wholesale) bags. Wholesale bags will increase in half (1/2) ounce increments up to one (1) pound. The designated amount of Kief will be packaged in a glass/plastic container or in parchment paper and then placed in the bag. Total THC per product will range 40-99%.

Product Depiction:





Approved Marijuana Products

Einstein Labs – 10082
2939 Porcupine Drive Suite B
Anchorage, AK 99501

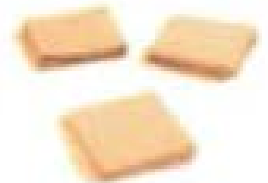
Alcohol and Marijuana Control Office
550 W 7th Avenue, Suite 1600

Anchorage, AK 99501

marijuana.licensing@alaska.gov

<https://www.commerce.alaska.gov/web/amco>

Phone: 907.269.0350



Front of Package



Back of Package





Approved Marijuana Products

Einstein Labs – 10082

2939 Porcupine Drive Suite B

Anchorage, AK 99501

Alcohol and Marijuana Control Office

550 W 7th Avenue, Suite 1600

Anchorage, AK 99501

marijuana.licensing@alaska.gov

<https://www.commerce.alaska.gov/web/amco>

Phone: 907.269.0350

Leaf Chews

Type:	Edible
Product Description:	Gluten Free. All candies/flavors produced under the Leaf Chews brands comes in a square form about the size of a stamp, and has a soft, chewy consistency with a squishy but firm texture. Flavors include: Berry Melon, Mixed Fruit , Strawberries and Cream, Orange Creamsicle, Goodness Grapeicious, Raspberry-Lime, Red Velvet Creme Cheese, Pineapple Sorbet, Peanut Butter & Jelly, Root Beer Float, Raspberry Swirl Cheesecake, Cookies N Cream, Salted Caramel & Sugar Free Salted Caramel. Product colors may vary slightly.
Packaging:	Leaf Chews will consist of ten (10) serving sizes (5mg THC each), each individually wrapped in food grade clear plastic and the placed in a food grade, silver or white mylar bag with an optional clear back as allowable under state and local regulation. Mylar bags will be approximately 3.5" x 5" x 1.5".

Product Depiction:

Peanut Butter & Jelly



Good Grapeicious



Root Beer Float



Mixed Fruit



Raspberry-Lime



Raspberry Swirl Cheesecake



Strawberries N Cream



Red Velvet Creme Cheese



Berry Melon



Orange Creamsicle



Pineapple Sorbet



Cookies N Cream





Approved Marijuana Products

Einstein Labs – 10082
2939 Porcupine Drive Suite B
Anchorage, AK 99501

Alcohol and Marijuana Control Office
550 W 7th Avenue, Suite 1600

Anchorage, AK 99501

marijuana.licensing@alaska.gov

<https://www.commerce.alaska.gov/web/amco>

Phone: 907.269.0350



Sample Label on Back of Package

Powered By: Einstein Labs	License # 10082	Batch# 123456
Anchorage, AK 99501 Est. Expiration ____ months from ____		
This is a marijuana product. Marijuana has intoxicating effects and may be habit forming or addictive. Marijuana impairs concentration, coordination, and judgment. Do not operate a vehicle or machinery under the influence. There are health risks associated with consumption of marijuana. For use only by adults twenty one and older, keep out of the reach of children. Marijuana should not be used by women who are pregnant or breast feeding.		
Retailer _____ License # _____	FOOD ALLERGY NOTICE NO STATE OF ALASKA FOOD ALLERGY LABELING REQUIREMENTS APPLIED TO THIS PRODUCT. PLEASE SEE THE MANUFACTURER'S LABEL FOR ALLERGEN INFORMATION. MANUFACTURED BY: EINSTEIN LABS ANCHORAGE, ALASKA	
<i>Affix Tracking Label Here</i>		



Approved Marijuana Products

Einstein Labs – 10082

2939 Porcupine Drive Suite B

Anchorage, AK 99501

Alcohol and Marijuana Control Office

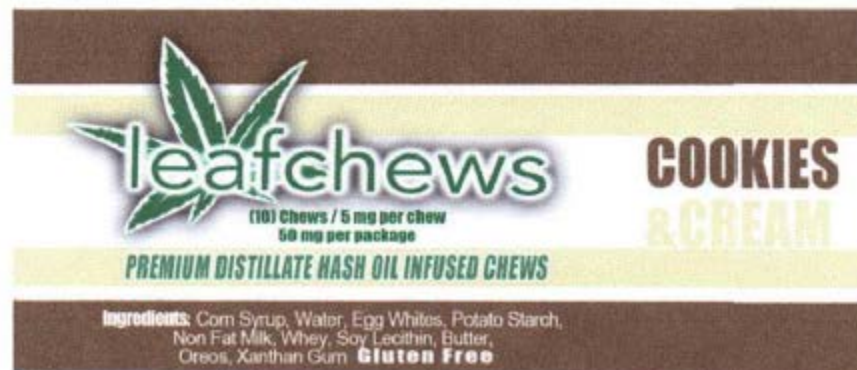
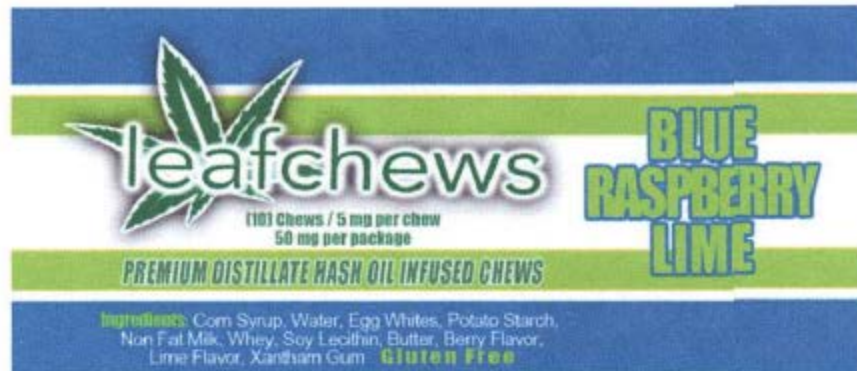
550 W 7th Avenue, Suite 1600

Anchorage, AK 99501

marijuana.licensing@alaska.gov

<https://www.commerce.alaska.gov/web/amco>

Phone: 907.269.0350



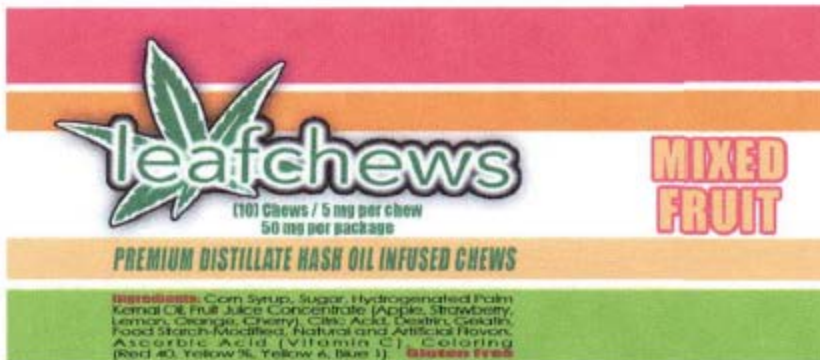
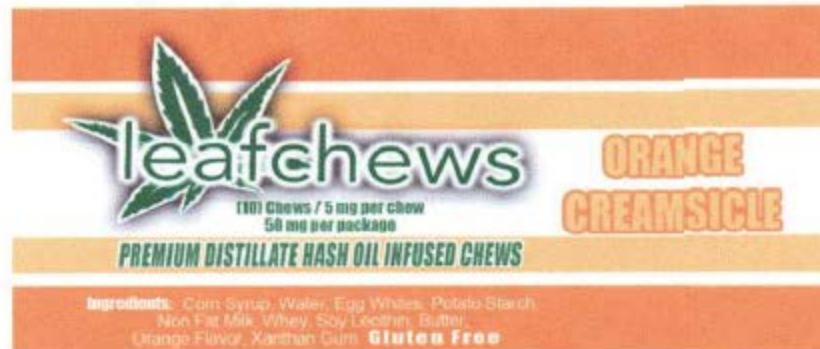


Approved Marijuana Products

Einstein Labs – 10082

2939 Porcupine Drive Suite B

Anchorage, AK 99501





Approved Marijuana Products

Einstein Labs – 10082

2939 Porcupine Drive Suite B

Anchorage, AK 99501

leafchews PEANUTBUTTER
N JELLY
(10) Chews / 5 mg per chew
50 mg per package
PREMIUM DISTILLATE HASH OIL INFUSED CHEWS
Ingredients: White chocolate, peanut butter,
sweetened condensed milk, peanuts,
dried strawberries. **Gluten Free**

leafchews PINEAPPLE
SORBET
(10) Chews / 5 mg per chew
50 mg per package
PREMIUM DISTILLATE HASH OIL INFUSED CHEWS
Ingredients: Corn Syrup, Water, Egg Whites, Potato Starch,
Non Fat Milk, Whey, Soy Lecithin, Butter, Pineapple Flavor,
Xanthan Gum. **Gluten Free**

leafchews RASPBERRY
CHEESECAKE
(10) Chews / 5 mg per chew
50 mg per package
PREMIUM DISTILLATE HASH OIL INFUSED CHEWS
Ingredients: Corn Syrup, Water, Egg Whites, Potato Starch,
Non Fat Milk, Whey, Soy Lecithin, Butter, Raspberry Flavor,
Creame Cheese Flavor, Xanthan Gum. **Gluten Free**



Approved Marijuana Products

Einstein Labs – 10082

2939 Porcupine Drive Suite B

Anchorage, AK 99501

Alcohol and Marijuana Control Office

550 W 7th Avenue, Suite 1600

Anchorage, AK 99501

marijuana.licensing@alaska.gov

<https://www.commerce.alaska.gov/web/amco>

Phone: 907.269.0350

leafchews **RED VELVET CAKE**

(10) Chews / 5 mg per chew
50 mg per package

PREMIUM DISTILLATE HASH OIL INFUSED CHEWS

Ingredients: Corn Syrup, Water, Egg Whites, Potato Starch, Non Fat Milk, Whey, Soy Lecithin, Butter, Red Velvet Emulsion, Xanthan Gum. **Gluten Free**

leafchews **ROOT BEER FLOAT**

(10) Chews / 5 mg per chew
50 mg per package

PREMIUM DISTILLATE HASH OIL INFUSED CHEWS

Ingredients: white chocolate, sweetened condensed milk, marshmallow, vanilla extract, root beer emulsion. **Gluten Free**

leafchews **SEA SALT CARAMEL**

(10) Chews / 5 mg per chew
50 mg per package

PREMIUM DISTILLATE HASH OIL INFUSED CHEWS

Ingredients: heavy whipping cream, butter, corn syrup, granulated sugar, black hawaiian lava salt, vanilla bean. **Gluten Free**



Approved Marijuana Products

Einstein Labs – 10082

2939 Porcupine Drive Suite B

Anchorage, AK 99501

Alcohol and Marijuana Control Office

550 W 7th Avenue, Suite 1600

Anchorage, AK 99501

marijuana.licensing@alaska.gov

<https://www.commerce.alaska.gov/web/amco>

Phone: 907.269.0350

leafchews
(10) Chews / 5 mg per chew
50 mg per package
PREMIUM DISTILLATE HASH OIL INFUSED CHEWS
**SUGAR FREE
SEA SALT
CARAMEL**

Ingredients: heavy whipping cream, butter, maltitol syrup, black hawaiian lava salt, vanilla bean
Gluten Free / Sugar Free

leafchews
(10) Chews / 5 mg per chew
50 mg per package
PREMIUM DISTILLATE HASH OIL INFUSED CHEWS
**STRAWBERRIES
& CREAM**

Ingredients: Corn Syrup, Water, Egg Whites, Potato Starch, Non Fat Milk, Whey, Soy Lecithin, Butter, Strawberry Flavor, Xanthan Gum
Gluten Free



Approved Marijuana Products

Einstein Labs – 10082
2939 Porcupine Drive Suite B
Anchorage, AK 99501

Alcohol and Marijuana Control Office
550 W 7th Avenue, Suite 1600
Anchorage, AK 99501

marijuana.licensing@alaska.gov
<https://www.commerce.alaska.gov/web/amco>

Phone: 907.269.0350

Mini Truffles

Type:	Marijuana Edible
Product Description:	Mini Truffles consist of ten (10), single serving, mini truffles with a chocolate hazelnut spread center, each containing 4-6mg of THC, totaling 50mg for the entire package. Each truffle is spherical in shape with a smooth surface, chocolate drizzle and hazelnut shavings (optional) and is approximately 1/2" in diameter with a brown color or brown color with white shavings on top. Estimated expiration date is 1 month.
Packaging:	Mini truffles will be individually packaged in green, food grade wrapping paper and then placed in a plastic, food grade container with a plastic lid and bottom (will be opaque as necessary to meet regulations). The plastic container is approximately 6' x 2" x 1/2". Each container contains ten (10) individual servings, each containing 5mg of THC per serving, 50 mg total per container.

Product Depiction:





Approved Marijuana Products

Einstein Labs – 10082
 2939 Porcupine Drive Suite B
 Anchorage, AK 99501

Alcohol and Marijuana Control Office
 550 W 7th Avenue, Suite 1600

Anchorage, AK 99501

marijuana.licensing@alaska.gov

<https://www.commerce.alaska.gov/web/amco>

Phone: 907.269.0350



Top of Package



Bottom of Package
 (Nutritional Label
 as Applicable)

Nutrition Facts	
Amount per Serving	
1 Truffle	

Total Fat	0.5g
	10%
Sodium	0.5g
	10%
Total Carbohydrate	0.5g
	10%
Total Protein	0.5g
	10%
*Percent Daily Values are based on a diet of other people's secrets.	





Approved Marijuana Products

Einstein Labs – 10082

2939 Porcupine Drive Suite B

Anchorage, AK 99501

Alcohol and Marijuana Control Office

550 W 7th Avenue, Suite 1600

Anchorage, AK 99501

marijuana.licensing@alaska.gov

<https://www.commerce.alaska.gov/web/amco>

Phone: 907.269.0350

Moisturizing Cannabis Lotion

Type:	Topical
Product Description:	Moisturizing Cannabis Lotion is a smooth, lightly scented (vanilla) cream. The lotion is off white in color and can be poured into any style container. Lotion may be strain specific with varying THC and CBD levels. Each lotion container will have 5mg of THC or less per bottle.
Packaging:	Lotion will be packaged in 2-6oz, opaque, black or white plastic bottles with a flip lid. Each bottle will contain 5mg servings or less of THC per bottle.

Product Depiction:





Approved Marijuana Products

Einstein Labs – 10082
2939 Porcupine Drive Suite B
Anchorage, AK 99501

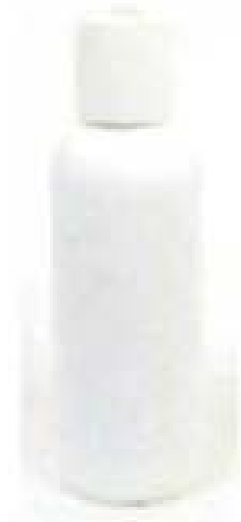
Alcohol and Marijuana Control Office
550 W 7th Avenue, Suite 1600

Anchorage, AK 99501

marijuana.licensing@alaska.gov

<https://www.commerce.alaska.gov/web/amco>

Phone: 907.269.0350



Label will wrap around the bottle





Approved Marijuana Products

Einstein Labs – 10082
2939 Porcupine Drive Suite B
Anchorage, AK 99501

Alcohol and Marijuana Control Office
550 W 7th Avenue, Suite 1600
Anchorage, AK 99501

marijuana.licensing@alaska.gov
<https://www.commerce.alaska.gov/web/amco>

Phone: 907.269.0350

Refreshing Cannabis Salve

Type:	Topical
Product Description:	Refreshing Cannabis Salve is a wax-like substance applied topically to the skin to moisturize and refresh dry skin. The salve has a light golden opaque color with an oily sheen and consistency. Salve will be strain specific with varying THC and CBD levels. Refreshing Cannabis Salve will have 5mg or less of THC per container. Used for topical applications.
Packaging:	Salve will be packaged in metal and plastic (white or black) containers approximately 1.7" x .6" in size. Each container will hold ten (10), 5mg servings of THC with the container containing no more than 5mg total. The lid of the salve bottle will have a label as well as will be packaged in a black or white mylar bag (3" x 4.5" approx.) with an optional clear back to show the inside packaging. Labels will be attached to the front and back of the bag in compliance with 3 AAC 306.570.

Product Depiction:





Approved Marijuana Products

Einstein Labs – 10082
2939 Porcupine Drive Suite B
Anchorage, AK 99501

Alcohol and Marijuana Control Office
550 W 7th Avenue, Suite 1600

Anchorage, AK 99501

marijuana.licensing@alaska.gov

<https://www.commerce.alaska.gov/web/amco>

Phone: 907.269.0350



Front of Package



Lid of Salve



Back of Package





Approved Marijuana Products

Einstein Labs – 10082
2939 Porcupine Drive Suite B
Anchorage, AK 99501

Alcohol and Marijuana Control Office
550 W 7th Avenue, Suite 1600
Anchorage, AK 99501

marijuana.licensing@alaska.gov
<https://www.commerce.alaska.gov/web/amco>
Phone: 907.269.0350

Rosin

Type:	Concentrate
Product Description:	Rosin has a bright golden yellow to amber color that has a gooey and silky or hard and brittle consistency. Rosin is sticky and oily in nature, will come in a variety of strains and will have a hard or soft consistency depending on strain. Comes in a variety of THC and CBD levels. Used for inhalation, vaping & making tinctures.

Packaging:	<p>Packaging consists of non-toxic, opaque, black or white mylar with an optional clear back to show product.</p> <p>Bags range from 3" x 4.5" (1 gram, not to be repackaged) to 14 3/5" x 16 3/7" x 6" (1 pound wholesale) bags.</p> <p>Wholesale bags will increase in half (1/2) ounce increments up to one (1) pound. The designated amount of Rosin will be packaged in a glass/plastic container or parchment paper and then placed in the bag. Syringe packaging will hold .5g-1.5g per vessel and be placed in a 2.5" x 9" mylar bag (black or white, optional clear back) not to be repackaged by retail stores. Total THC per product will range 40-99%.</p>
-------------------	--

Product Depiction:





Approved Marijuana Products

Einstein Labs – 10082
2939 Porcupine Drive Suite B
Anchorage, AK 99501

Alcohol and Marijuana Control Office
550 W 7th Avenue, Suite 1600

Anchorage, AK 99501

marijuana.licensing@alaska.gov

<https://www.commerce.alaska.gov/web/amco>

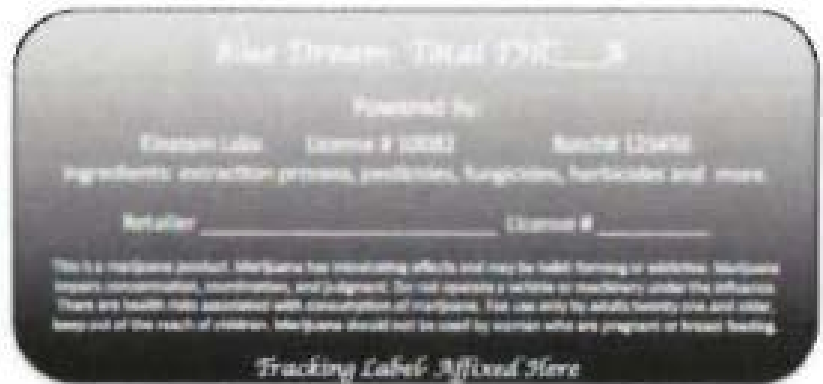
Phone: 907.269.0350



Front of Package



Back of Package





Approved Marijuana Products

Einstein Labs – 10082

2939 Porcupine Drive Suite B

Anchorage, AK 99501

Shatter

Type:	Concentrate
Product Description:	Shatter has a smooth, glass like texture that is hard & brittle when cold (shatters when broken apart) and has the consistency and appearance of honey when warm. Color ranges from yellow to amber. Comes in a variety of strains with varying THC & CBD levels. Used for inhalation, making edibles and topicals.
Packaging:	Packaging consists of non-toxic, opaque, black or white mylar with an optional clear back to show product. Bags range from 3" x 4.5" (1 gram, not to be repackaged) to 14 3/5" x 16 3/7" x 6" (1 pound wholesale) bags. Wholesale bags will increase in half (1/2) ounce increments up to one (1) pound. The designated amount of shatter will be packaged in a glass/plastic container or parchment paper and then placed in the bag. Syringe packaging will hold .5g-1.5g per vessel and be placed in a 2.5" x 9" mylar bag (black or white, optional clear back) not to be repackaged by retail stores. Total THC per product will range 40-99%.

Product Depiction:





Approved Marijuana Products

Einstein Labs – 10082
2939 Porcupine Drive Suite B
Anchorage, AK 99501

Alcohol and Marijuana Control Office
550 W 7th Avenue, Suite 1600

Anchorage, AK 99501

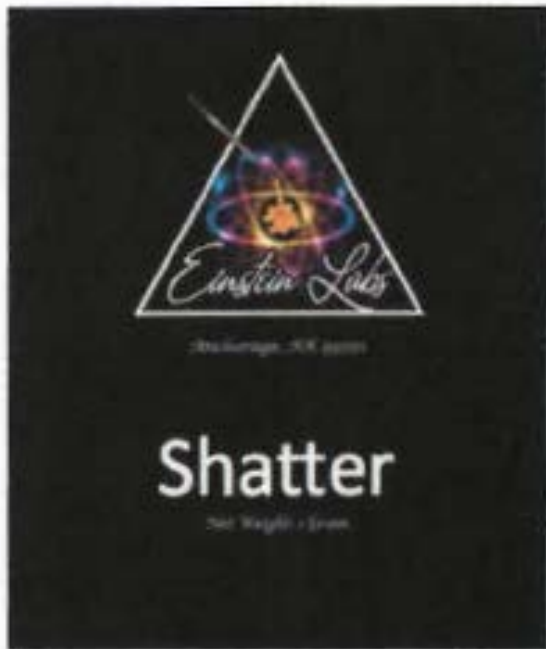
marijuana.licensing@alaska.gov

<https://www.commerce.alaska.gov/web/amco>

Phone: 907.269.0350



Front Of Package



Back of Package





Approved Marijuana Products

Einstein Labs – 10082

2939 Porcupine Drive Suite B

Anchorage, AK 99501

Alcohol and Marijuana Control Office

550 W 7th Avenue, Suite 1600

Anchorage, AK 99501

marijuana.licensing@alaska.gov

<https://www.commerce.alaska.gov/web/amco>

Phone: 907.269.0350

Sugar Sap

Type:	Concentrate, Live Resin
Product Description:	Sugar Sap has a very bright golden color that has a gooey and granular consistency. The resin is sticky and oily in nature and ranges from bright yellow to amber. Comes in a variety of strains with varying THC and CBD levels. Used for inhalation, vaping & making tinctures.
Packaging:	Cannabis oil is extracted through a closed loop machine using live flower or trim with one of the following solvents; Butane, N-Butane, Iso-Butane (or a combination of) or Ethanol. The solution is strained & purged to remove all plant matter and solvents from the product to below regulated ranges pursuant to 3 AAC 306.645. The concentrated product is placed in a vacuum at a warm temperature for approximately 2-5 days completing the process.

Product Depiction:





Approved Marijuana Products

Einstein Labs – 10082
2939 Porcupine Drive Suite B
Anchorage, AK 99501

Alcohol and Marijuana Control Office
550 W 7th Avenue, Suite 1600

Anchorage, AK 99501

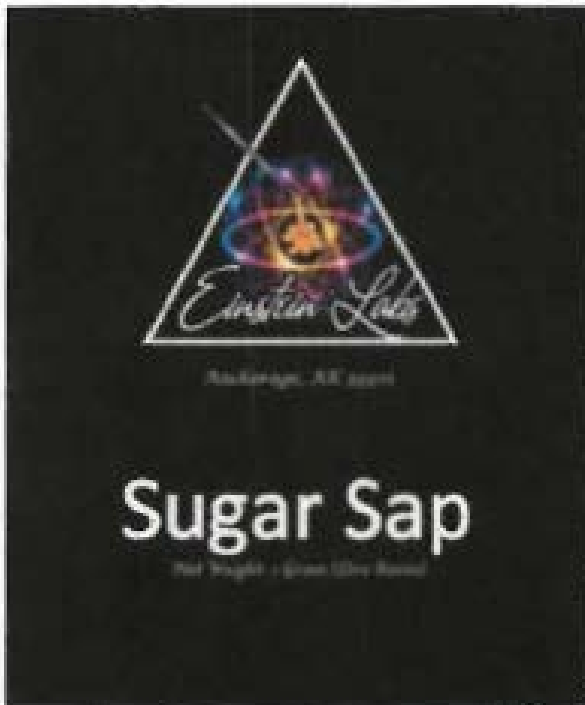
marijuana.licensing@alaska.gov

<https://www.commerce.alaska.gov/web/amco>

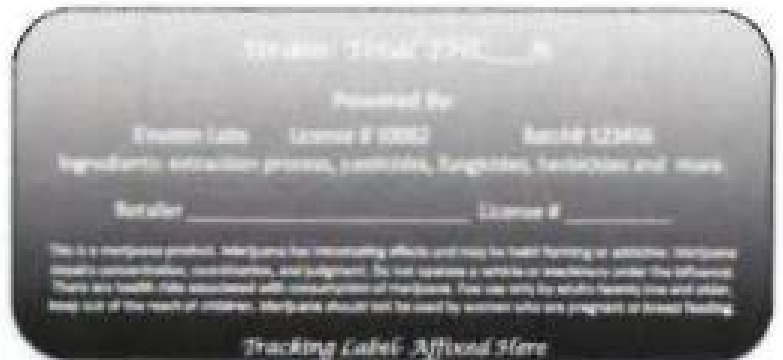
Phone: 907.269.0350



Front of Package



Back of Package





Approved Marijuana Products

Einstein Labs – 10082

2939 Porcupine Drive Suite B

Anchorage, AK 99501

Alcohol and Marijuana Control Office

550 W 7th Avenue, Suite 1600

Anchorage, AK 99501

marijuana.licensing@alaska.gov

<https://www.commerce.alaska.gov/web/amco>

Phone: 907.269.0350

Sugar Silk

Type:	Concentrate, Live Resin
Product Description:	Sugar Silk has a very bright golden color that has a gooey and silky consistency. The resin is sticky and oily in nature and ranges from bright yellow to amber. Comes in a variety of strains with varying THC and CBD levels. Used for inhalation, vaping & making tinctures.
Packaging:	<p>Packaging consists of non-toxic, opaque, black or white mylar with an optional clear back to show product.</p> <p>Bags range from 3" x 4.5" (1 gram, not to be repackaged) to 14 3/5" x 16 3/7" x 6" (1 pound wholesale) bags.</p> <p>Wholesale bags will increase in half (1/2) ounce increments up to one (1) pound. The designated amount of Sugar Silk will be packaged in a glass/plastic container or parchment paper and then placed in the bag. Syringe packaging will hold .5g-1.5g per vessel and be placed in a 2.5" x 9" mylar bag (black or white, optional clear back) not to be repackaged by retail stores. Total THC per product will range 40-99%.</p>

Product Depiction:





Approved Marijuana Products

Einstein Labs – 10082
2939 Porcupine Drive Suite B
Anchorage, AK 99501

Alcohol and Marijuana Control Office
550 W 7th Avenue, Suite 1600

Anchorage, AK 99501

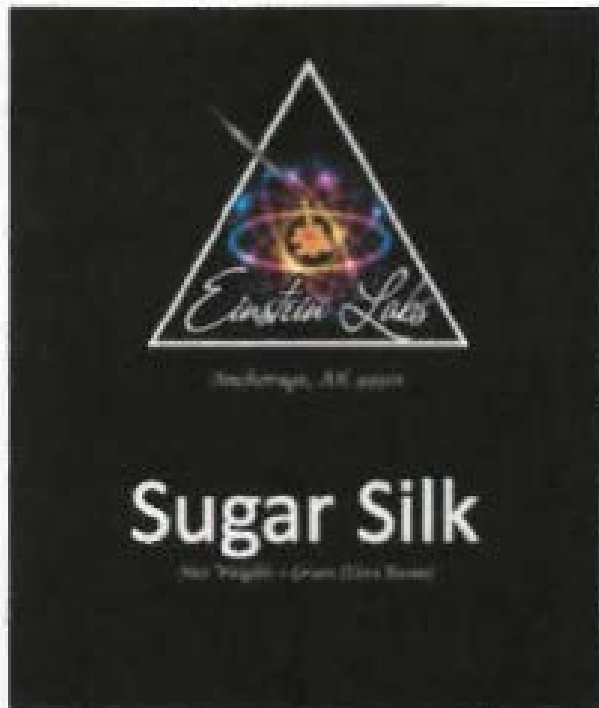
marijuana.licensing@alaska.gov

<https://www.commerce.alaska.gov/web/amco>

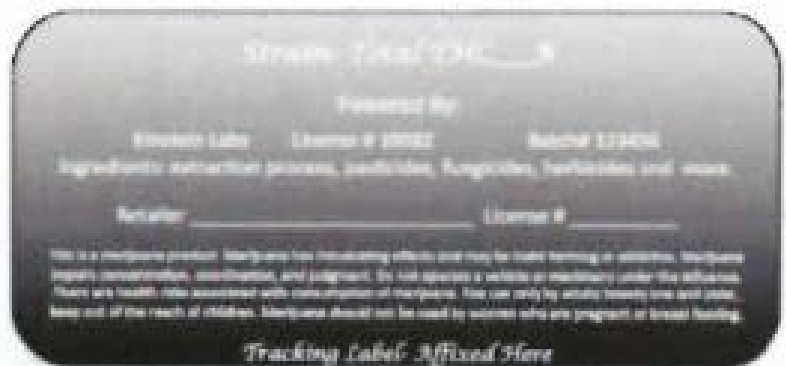
Phone: 907.269.0350



Front of Package



Back of Package





Approved Marijuana Products

Einstein Labs – 10082

2939 Porcupine Drive Suite B

Anchorage, AK 99501

Alcohol and Marijuana Control Office

550 W 7th Avenue, Suite 1600

Anchorage, AK 99501

marijuana.licensing@alaska.gov

<https://www.commerce.alaska.gov/web/amco>

Phone: 907.269.0350

The Clear

Type:	Concentrate
Product Description:	The Clear is transparent and ranges from clear to clear with a light yellow tint that has a goeey and smooth consistency. The Clear is sticky and oily in nature and forms to the container it is in. Comes in a variety of strains with varying THC and CBD levels. Used for inhalation, vaping & making tinctures.
Packaging:	Packaging consists of non-toxic, opaque, black or white mylar with an optional clear back to show product. Bags range from 3" x 4.5" (1 gram, not to be repackaged) to 14 3/5" x 16 3/7" x 6" (1 pound wholesale) bags. Wholesale bags will increase in half (1/2) ounce increments up to one (1) pound. The designated amount of The Clear will be packaged in a glass or plastic container and then placed in the bag. Syringe packaging will hold .5g-1.5g per vessel and be placed in a 2.5" x 9" mylar bag (black or white, optional clear back) not to be repackaged by retail stores. Total THC per product will range 40-99%.

Product Depiction:





Approved Marijuana Products

Einstein Labs – 10082
2939 Porcupine Drive Suite B
Anchorage, AK 99501

Alcohol and Marijuana Control Office
550 W 7th Avenue, Suite 1600

Anchorage, AK 99501

marijuana.licensing@alaska.gov

<https://www.commerce.alaska.gov/web/amco>

Phone: 907.269.0350



Front of Package



Back of Package





Approved Marijuana Products

Einstein Labs – 10082
2939 Porcupine Drive Suite B
Anchorage, AK 99501

Alcohol and Marijuana Control Office
550 W 7th Avenue, Suite 1600
Anchorage, AK 99501

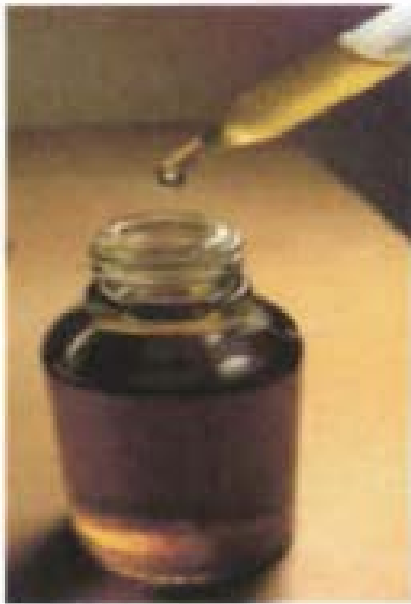
marijuana.licensing@alaska.gov
<https://www.commerce.alaska.gov/web/amco>

Phone: 907.269.0350

Tincture

Type:	Concentrate, Edible, Tincture
Product Description:	Tinctures appear as a golden amber to yellow liquid that is transparent by nature. The liquid takes on the shape of the container it is placed in and has a consistency similar to water. Tinctures will come in a variety of strains with differing THC and CBD levels. Used for ingestion.
Packaging:	Tinctures will be packaged in 5ml, black (opaque) or amber bottles with rubber toppers and a pipette (plastic tube attached to topper). Each bottle will contain ten (10), 5mg servings of marijuana, not to exceed 50mg per bottle.

Product Depiction:





Approved Marijuana Products

Einstein Labs – 10082
2939 Porcupine Drive Suite B
Anchorage, AK 99501

Alcohol and Marijuana Control Office
550 W 7th Avenue, Suite 1600
Anchorage, AK 99501
marijuana.licensing@alaska.gov
<https://www.commerce.alaska.gov/web/amco>
Phone: 907.269.0350



Label will wrap around the bottle





Approved Marijuana Products

Einstein Labs – 10082

2939 Porcupine Drive Suite B

Anchorage, AK 99501

Wake and Bake Energy Drink

Type:	Edible
Product Description:	Wake & Bake Energy Drink has a liquid consistency similar to water and is transparent in nature. Wake & Bake will form into the shape of the container it is in and has a smooth and bubbly appearance. The energy drink is green in color and comes in green apple, passion fruit and fruit punch. Estimated expiration date is 1 year.
Packaging:	W & B energy drinks will be packaged in food grade, child proof, re-sealable bottles (Opaque or clear) designed for liquids with a delineation line on one side for serving size purposes. The bottle holds 12 oz of liquid and is approximately 2.3" in diameter and 7.7" height. Each bottle will contain ten (10) servings of 5mg THC with a total of 50mg per bottle.

Product Depiction:





Approved Marijuana Products

Einstein Labs – 10082
 2939 Porcupine Drive Suite B
 Anchorage, AK 99501

Alcohol and Marijuana Control Office
 550 W 7th Avenue, Suite 1600

Anchorage, AK 99501

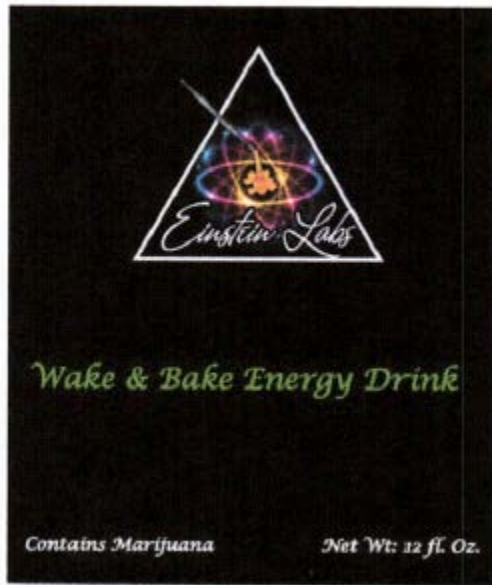
marijuana.licensing@alaska.gov

<https://www.commerce.alaska.gov/web/amco>

Phone: 907.269.0350



Front of Bottle



Back of Bottle
 (Nutritional Label
 as Applicable)

Nutrition Facts

Serving Size _____ fl
 Servings Per Container _____

Amount Per Serving
 Calories _____

	% Daily Value
Total Fat _____ g	%
Saturated Fat _____ g	%
Polysaturated Fat _____ g	%
Monounsaturated Fat _____ g	%
Cholesterol _____ mg	%
Sodium _____ mg	%
Potassium _____ mg	%
Total Carbohydrate _____ g	%
Dietary Fiber _____ g	%
Sugars _____ g	%
Protein _____ g	%
Vitamin A _____ %	Vitamin C _____ %
Calcium _____ %	Iron _____ %
Phosphorus _____ %	Magnesium _____ %

