



## Approved Marijuana Products

**Babylon Company - 10322**

**6820 Rosewood Street #9**

**Anchorage, AK 99518**

---

Alcohol and Marijuana Control Office

550 W 7<sup>th</sup> Avenue, Suite 1600

Anchorage, AK 99501

[marijuana.licensing@alaska.gov](mailto:marijuana.licensing@alaska.gov)

<https://www.commerce.alaska.gov/web/amco>

Phone: 907.269.0350

### Contents

Cake Batter .....	2
Crumble .....	4
Dry Sift Hash .....	6
Hash Oil .....	8
Hash .....	10
Honeycomb .....	12
Kief.....	14
Liquid Nitrogen Kief.....	16
Pressed Hash .....	18
Rosin .....	20
Sap .....	22
Shatter.....	24
Sugar.....	26
Terpene Isolate.....	28
THC/CBD Isolate .....	30
THC Distillate .....	32
Wax.....	34



## Approved Marijuana Products

### Babylon Company - 10322

6820 Rosewood Street #9

Anchorage, AK 99518

### Cake Batter

<b>Type:</b>	Concentrate
<b>Product Description:</b>	Cake Batter is bright yellow to dark amber in color. The shape is chunky and clump-like. The texture is smooth to rigid in structure.
<b>Packaging:</b>	4mm silver mylar bags. Heat sealed and child resistant. Package must be cut to open and is resealable. Product is placed directly into acrylic or glass containers with a small piece of parchment paper below. Containers are sterilized prior to product placement. See sample packaging below.

#### Product Depiction:





## Approved Marijuana Products

### Babylon Company - 10322

6820 Rosewood Street #9

Anchorage, AK 99518

Alcohol and Marijuana Control Office

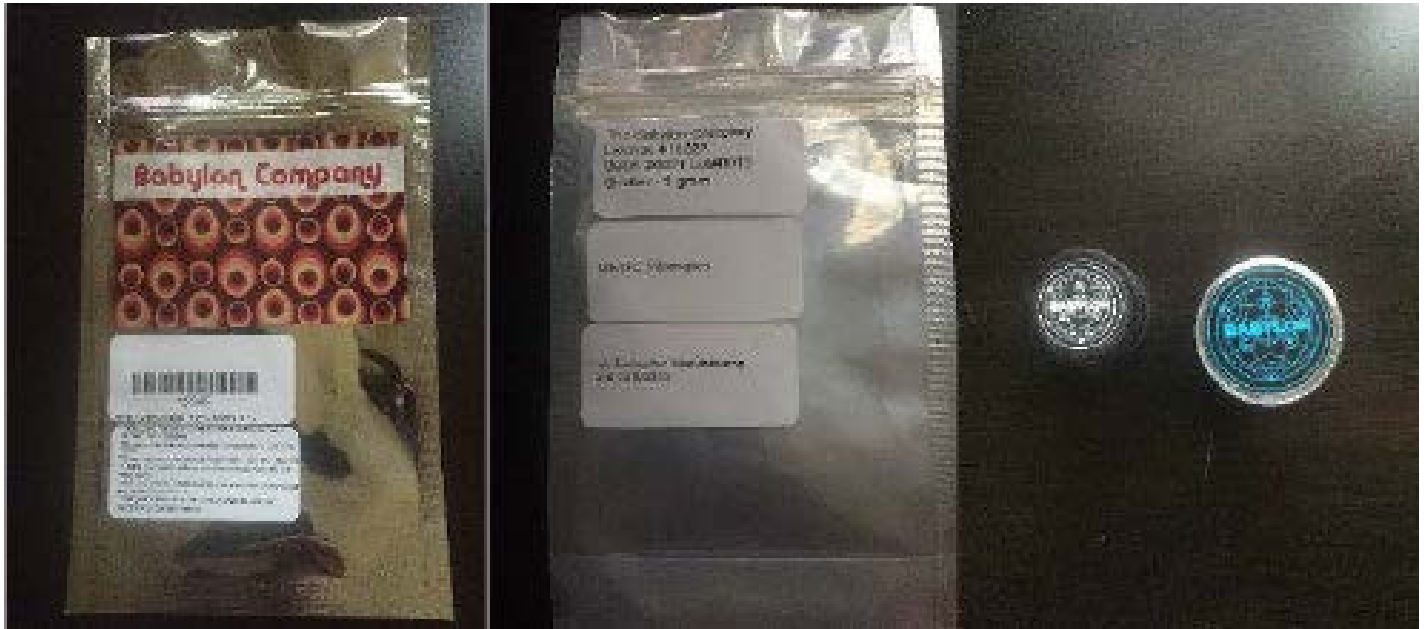
550 W 7<sup>th</sup> Avenue, Suite 1600

Anchorage, AK 99501

[marijuana.licensing@alaska.gov](mailto:marijuana.licensing@alaska.gov)

<https://www.commerce.alaska.gov/web/amco>

Phone: 907.269.0350





## Approved Marijuana Products

### Babylon Company - 10322

6820 Rosewood Street #9

Anchorage, AK 99518

---

### Crumble

<b>Type:</b>	Concentrate
<b>Product Description:</b>	Color is bright yellow/white, shape is micro-crystalline or powdery. The texture is between clumpy and crystalline.
<b>Packaging:</b>	4mm silver mylar bags. Heat sealed and child resistant. Package must be cut to open and is resealable. Product is placed directly into acrylic or glass containers with a small piece of parchment paper below. Containers are sterilized prior to product placement. See packaging example below.

**Product Depiction:**





## Approved Marijuana Products

### Babylon Company - 10322

6820 Rosewood Street #9

Anchorage, AK 99518

Alcohol and Marijuana Control Office

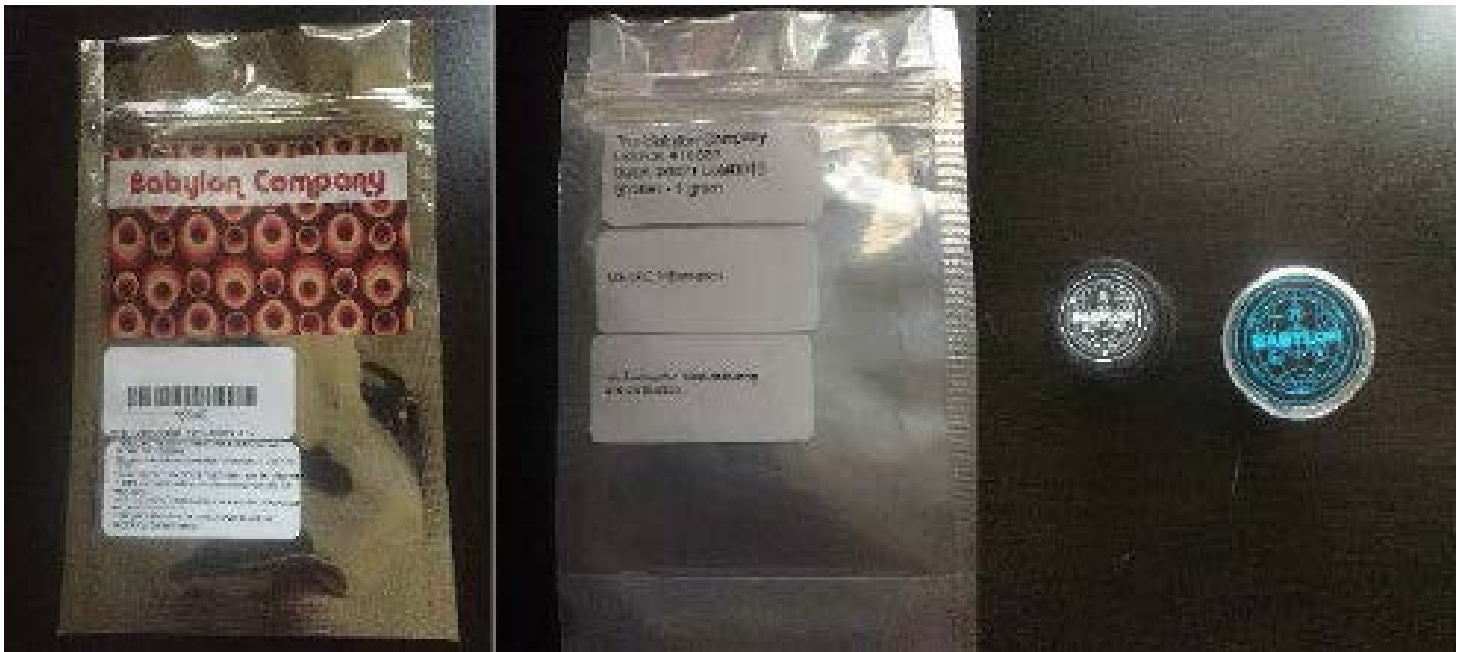
550 W 7<sup>th</sup> Avenue, Suite 1600

Anchorage, AK 99501

[marijuana.licensing@alaska.gov](mailto:marijuana.licensing@alaska.gov)

<https://www.commerce.alaska.gov/web/amco>

Phone: 907.269.0350





## Approved Marijuana Products

### Babylon Company - 10322

6820 Rosewood Street #9

Anchorage, AK 99518

Alcohol and Marijuana Control Office

550 W 7<sup>th</sup> Avenue, Suite 1600

Anchorage, AK 99501

[marijuana.licensing@alaska.gov](mailto:marijuana.licensing@alaska.gov)

<https://www.commerce.alaska.gov/web/amco>

Phone: 907.269.0350

---

### Dry Sift Hash

<b>Type:</b>	Concentrate/Hash
<b>Product Description:</b>	Color is light yellow to dark brown. Shape is small, round separations of the trichomes. Texture is similar to sand or as fine as talc.
<b>Packaging:</b>	4mm silver mylar bags. Heat sealed and child resistant. Package must be cut to open and is resealable. Product is placed directly into acrylic or glass containers with a small piece of parchment paper below. Containers are sterilized prior to product placement.

#### Product Depiction:





## Approved Marijuana Products

### Babylon Company - 10322

6820 Rosewood Street #9

Anchorage, AK 99518

Alcohol and Marijuana Control Office

550 W 7<sup>th</sup> Avenue, Suite 1600

Anchorage, AK 99501

[marijuana.licensing@alaska.gov](mailto:marijuana.licensing@alaska.gov)

<https://www.commerce.alaska.gov/web/amco>

Phone: 907.269.0350





## Approved Marijuana Products

### Babylon Company - 10322

6820 Rosewood Street #9

Anchorage, AK 99518

Alcohol and Marijuana Control Office

550 W 7<sup>th</sup> Avenue, Suite 1600

Anchorage, AK 99501

[marijuana.licensing@alaska.gov](mailto:marijuana.licensing@alaska.gov)

<https://www.commerce.alaska.gov/web/amco>

Phone: 907.269.0350

---

### Hash Oil

<b>Type:</b>	Concentrate
<b>Product Description:</b>	Color is yellow to dark brown. Shape and texture are fluid.
<b>Packaging:</b>	4mm silver mylar bags. Heat sealed and child resistant. Package must be cut to open and is resealable. Product is placed directly into acrylic or glass containers . Containers are sterilized prior to product placement.

#### Product Depiction:







## Approved Marijuana Products

### Babylon Company - 10322

6820 Rosewood Street #9

Anchorage, AK 99518

Alcohol and Marijuana Control Office

550 W 7<sup>th</sup> Avenue, Suite 1600

Anchorage, AK 99501

[marijuana.licensing@alaska.gov](mailto:marijuana.licensing@alaska.gov)

<https://www.commerce.alaska.gov/web/amco>

Phone: 907.269.0350





## Approved Marijuana Products

### Babylon Company - 10322

6820 Rosewood Street #9

Anchorage, AK 99518

Alcohol and Marijuana Control Office

550 W 7<sup>th</sup> Avenue, Suite 1600

Anchorage, AK 99501

[marijuana.licensing@alaska.gov](mailto:marijuana.licensing@alaska.gov)

<https://www.commerce.alaska.gov/web/amco>

Phone: 907.269.0350

---

### Hash

<b>Type:</b>	Hash
<b>Product Description:</b>	Color is dark brown to black. Shape is cubic to round. Texture is smooth, and slightly tacky.
<b>Packaging:</b>	4mm silver mylar bags. Heat sealed and child resistant. Package must be cut to open and is resealable. Product is placed directly into acrylic or glass containers with a small piece of parchment paper below. Containers are sterilized prior to product placement.

#### Product Depiction:





## Approved Marijuana Products

### Babylon Company - 10322

6820 Rosewood Street #9

Anchorage, AK 99518

Alcohol and Marijuana Control Office

550 W 7<sup>th</sup> Avenue, Suite 1600

Anchorage, AK 99501

[marijuana.licensing@alaska.gov](mailto:marijuana.licensing@alaska.gov)

<https://www.commerce.alaska.gov/web/amco>

Phone: 907.269.0350





## Approved Marijuana Products

### Babylon Company - 10322

6820 Rosewood Street #9

Anchorage, AK 99518

---

### Honeycomb

<b>Type:</b>	Concentrate
<b>Product Description:</b>	Color is bright yellow to light brown. Shape is square to round. Texture is porous and a honeycomb structure is present when the sample is split.
<b>Packaging:</b>	4mm silver mylar bags. Heat sealed and child resistant. Package must be cut to open and is resealable. Product is placed directly into acrylic or glass containers with a small piece of parchment paper below. Containers are sterilized prior to product placement.

**Product Depiction:**





## Approved Marijuana Products

### Babylon Company - 10322

6820 Rosewood Street #9

Anchorage, AK 99518

Alcohol and Marijuana Control Office

550 W 7<sup>th</sup> Avenue, Suite 1600

Anchorage, AK 99501

[marijuana.licensing@alaska.gov](mailto:marijuana.licensing@alaska.gov)

<https://www.commerce.alaska.gov/web/amco>

Phone: 907.269.0350





## Approved Marijuana Products

### Babylon Company - 10322

6820 Rosewood Street #9

Anchorage, AK 99518

Alcohol and Marijuana Control Office

550 W 7<sup>th</sup> Avenue, Suite 1600

Anchorage, AK 99501

[marijuana.licensing@alaska.gov](mailto:marijuana.licensing@alaska.gov)

<https://www.commerce.alaska.gov/web/amco>

Phone: 907.269.0350

---

### Kief

<b>Type:</b>	Concentrate/Hash
<b>Product Description:</b>	Color is light green to dark brown. Shape is a powdered rounds of the trichomes. Texture is smooth, powdered, or grainy.
<b>Packaging:</b>	4mm silver mylar bags. Heat sealed and child resistant. Package must be cut to open and is resealable. Product is placed directly into acrylic or glass containers with a small piece of parchment paper below. Containers are sterilized prior to product placement.

**Product Depiction:**





## Approved Marijuana Products

### Babylon Company - 10322

6820 Rosewood Street #9

Anchorage, AK 99518

Alcohol and Marijuana Control Office

550 W 7<sup>th</sup> Avenue, Suite 1600

Anchorage, AK 99501

[marijuana.licensing@alaska.gov](mailto:marijuana.licensing@alaska.gov)

<https://www.commerce.alaska.gov/web/amco>

Phone: 907.269.0350





## Approved Marijuana Products

### Babylon Company - 10322

6820 Rosewood Street #9

Anchorage, AK 99518

---

### Liquid Nitrogen Kief

<b>Type:</b>	Concentrate/Hash
<b>Product Description:</b>	Color is white, yellow, to dark green/brown. Shape is round on a semi-microscopic level. Texture is smooth, grainy, to sandy.
<b>Packaging:</b>	4mm silver mylar bags. Heat sealed and child resistant. Package must be cut to open and is resealable. Product is placed directly into acrylic or glass containers with a small piece of parchment paper below. Containers are sterilized prior to product placement.

**Product Depiction:**







## Approved Marijuana Products

### Babylon Company - 10322

6820 Rosewood Street #9

Anchorage, AK 99518

Alcohol and Marijuana Control Office

550 W 7<sup>th</sup> Avenue, Suite 1600

Anchorage, AK 99501

[marijuana.licensing@alaska.gov](mailto:marijuana.licensing@alaska.gov)

<https://www.commerce.alaska.gov/web/amco>

Phone: 907.269.0350





## Approved Marijuana Products

### Babylon Company - 10322

6820 Rosewood Street #9

Anchorage, AK 99518

---

### Pressed Hash

<b>Type:</b>	Hash/Concentrate
<b>Product Description:</b>	Color is a blonde to dark brown, black. Shape is flat to round. Texture is smooth and dry to the touch.
<b>Packaging:</b>	4mm silver mylar bags. Heat sealed and child resistant. Package must be cut to open and is resealable. Product is placed directly into acrylic or glass containers with a small piece of parchment paper below. Containers are sterilized prior to product placement.

**Product Depiction:**





## Approved Marijuana Products

### Babylon Company - 10322

6820 Rosewood Street #9

Anchorage, AK 99518

Alcohol and Marijuana Control Office

550 W 7<sup>th</sup> Avenue, Suite 1600

Anchorage, AK 99501

[marijuana.licensing@alaska.gov](mailto:marijuana.licensing@alaska.gov)

<https://www.commerce.alaska.gov/web/amco>

Phone: 907.269.0350





## Approved Marijuana Products

### Babylon Company - 10322

6820 Rosewood Street #9

Anchorage, AK 99518

---

### Rosin

<b>Type:</b>	Concentrate
<b>Product Description:</b>	Color ranges from light yellow/white to dark amber/brown. Shape is amorphous flat to chunky. Texture is smooth/sticky to clumped masses.
<b>Packaging:</b>	4mm silver mylar bags. Heat sealed and child resistant. Package must be cut to open and is resealable. Product is placed directly into acrylic or glass containers with a small piece of parchment paper below. Containers are sterilized prior to product placement. Flat samples will be placed onto parchment paper and into small envelopes.

**Product Depiction:**





## Approved Marijuana Products

### Babylon Company - 10322

6820 Rosewood Street #9

Anchorage, AK 99518

Alcohol and Marijuana Control Office

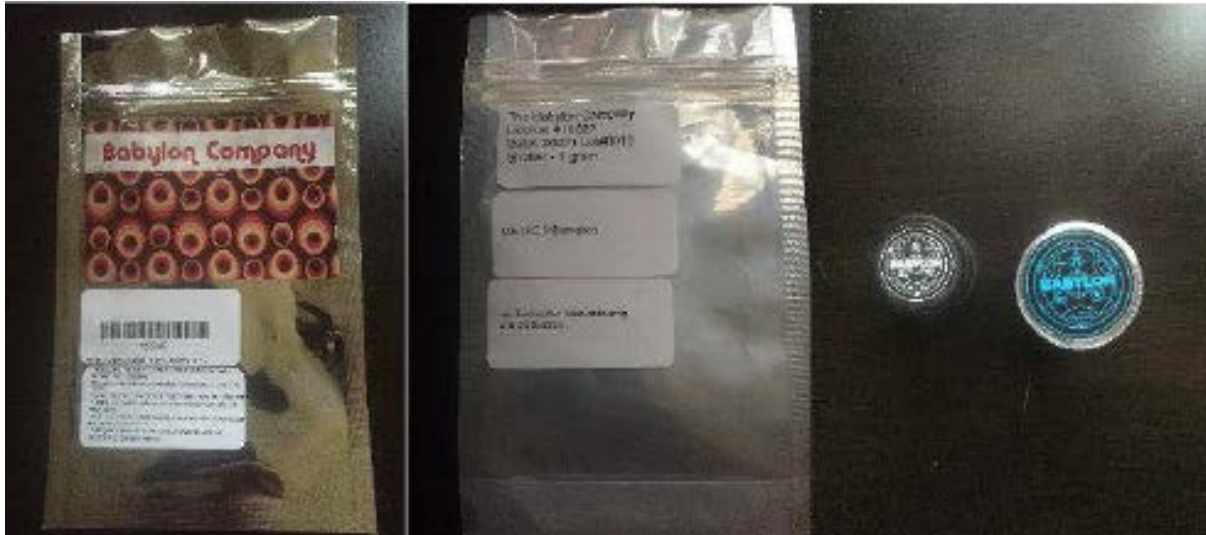
550 W 7<sup>th</sup> Avenue, Suite 1600

Anchorage, AK 99501

[marijuana.licensing@alaska.gov](mailto:marijuana.licensing@alaska.gov)

<https://www.commerce.alaska.gov/web/amco>

Phone: 907.269.0350





## Approved Marijuana Products

### Babylon Company - 10322

6820 Rosewood Street #9

Anchorage, AK 99518

Alcohol and Marijuana Control Office

550 W 7<sup>th</sup> Avenue, Suite 1600

Anchorage, AK 99501

[marijuana.licensing@alaska.gov](mailto:marijuana.licensing@alaska.gov)

<https://www.commerce.alaska.gov/web/amco>

Phone: 907.269.0350

## Sap

<b>Type:</b>	Concentrate
<b>Product Description:</b>	Color is bright yellow to dark amber. Shape is square to amorphous. Texture is sticky to the touch, slab is solid to porous.
<b>Packaging:</b>	4mm silver mylar bags. Heat sealed and child resistant. Package must be cut to open and is resealable. Product is placed onto parchment paper and then into a sealed, small envelope.

### Product Depiction:





## Approved Marijuana Products

### Babylon Company - 10322

6820 Rosewood Street #9

Anchorage, AK 99518

Alcohol and Marijuana Control Office

550 W 7<sup>th</sup> Avenue, Suite 1600

Anchorage, AK 99501

[marijuana.licensing@alaska.gov](mailto:marijuana.licensing@alaska.gov)

<https://www.commerce.alaska.gov/web/amco>

Phone: 907.269.0350





## Approved Marijuana Products

### Babylon Company - 10322

6820 Rosewood Street #9

Anchorage, AK 99518

---

### Shatter

<b>Type:</b>	Concentrate
<b>Product Description:</b>	Color is yellow/white to dark amber. Shape is generally square, but can be fractured or splintered. The texture is smooth and not tacky to the touch. Can be a solid slab or porous.
<b>Packaging:</b>	4mm black mylar bags. Heat sealed and child resistant. Package must be cut to open and is resealable. Product is placed directly onto parchment paper and then in a small envelope.

#### Product Depiction:







## Approved Marijuana Products

### Babylon Company - 10322

6820 Rosewood Street #9

Anchorage, AK 99518

Alcohol and Marijuana Control Office

550 W 7<sup>th</sup> Avenue, Suite 1600

Anchorage, AK 99501

[marijuana.licensing@alaska.gov](mailto:marijuana.licensing@alaska.gov)

<https://www.commerce.alaska.gov/web/amco>

Phone: 907.269.0350





## Approved Marijuana Products

### Babylon Company - 10322

6820 Rosewood Street #9

Anchorage, AK 99518

---

### Sugar

<b>Type:</b>	Concentrate
<b>Product Description:</b>	Color is bright yellow to dark amber. Shape is small crystalline spheres, amorphous. Texture is similar to sugar grainy to the touch.
<b>Packaging:</b>	4mm silver mylar bags. Heat sealed and child resistant. Package must be cut to open and is resealable. Product is placed directly into acrylic or glass containers with a small piece of parchment paper below. Containers are sterilized prior to product placement.

**Product Depiction:**





## Approved Marijuana Products

### Babylon Company - 10322

6820 Rosewood Street #9

Anchorage, AK 99518

Alcohol and Marijuana Control Office

550 W 7<sup>th</sup> Avenue, Suite 1600

Anchorage, AK 99501

[marijuana.licensing@alaska.gov](mailto:marijuana.licensing@alaska.gov)

<https://www.commerce.alaska.gov/web/amco>

Phone: 907.269.0350





## Approved Marijuana Products

### Babylon Company - 10322

6820 Rosewood Street #9

Anchorage, AK 99518

---

### Terpene Isolate

<b>Type:</b>	Concentrate
<b>Product Description:</b>	Clear to light yellow, to amber. Shape and texture is fluid.
<b>Packaging:</b>	4mm silver mylar bags. Heat sealed and child resistant. Package must be cut to open and is resealable. Product is placed directly into acrylic or glass containers with a small piece of parchment paper below. Containers are sterilized prior to product placement.

**Product Depiction:**





## Approved Marijuana Products

### Babylon Company - 10322

6820 Rosewood Street #9

Anchorage, AK 99518

Alcohol and Marijuana Control Office

550 W 7<sup>th</sup> Avenue, Suite 1600

Anchorage, AK 99501

[marijuana.licensing@alaska.gov](mailto:marijuana.licensing@alaska.gov)

<https://www.commerce.alaska.gov/web/amco>

Phone: 907.269.0350





## Approved Marijuana Products

### Babylon Company - 10322

6820 Rosewood Street #9

Anchorage, AK 99518

---

### THC/CBD Isolate

<b>Type:</b>	Concentrate
<b>Product Description:</b>	Color is clear/white to light yellow/amber. Shape is fine, crystalline, and powdery. Texture is amorphous.
<b>Packaging:</b>	4mm silver mylar bags. Heat sealed and child resistant. Package must be cut to open and is resealable. Product is placed directly into acrylic or glass containers with a small piece of parchment paper below. Containers are sterilized prior to product placement.

**Product Depiction:**





## Approved Marijuana Products

### Babylon Company - 10322

6820 Rosewood Street #9

Anchorage, AK 99518

Alcohol and Marijuana Control Office

550 W 7<sup>th</sup> Avenue, Suite 1600

Anchorage, AK 99501

[marijuana.licensing@alaska.gov](mailto:marijuana.licensing@alaska.gov)

<https://www.commerce.alaska.gov/web/amco>

Phone: 907.269.0350





## Approved Marijuana Products

### Babylon Company - 10322

6820 Rosewood Street #9

Anchorage, AK 99518

---

### THC Distillate

<b>Type:</b>	Concentrate
<b>Product Description:</b>	Color is clear to yellow to dark amber red. Shape and texture are fluid.
<b>Packaging:</b>	4mm silver mylar bags. Heat sealed and child resistant. Package must be cut to open and is resealable. Product is placed directly into acrylic or glass containers with a small piece of parchment paper below. Containers are sterilized prior to product placement.

**Product Depiction:**







## Approved Marijuana Products

### Babylon Company - 10322

6820 Rosewood Street #9

Anchorage, AK 99518

Alcohol and Marijuana Control Office

550 W 7<sup>th</sup> Avenue, Suite 1600

Anchorage, AK 99501

[marijuana.licensing@alaska.gov](mailto:marijuana.licensing@alaska.gov)

<https://www.commerce.alaska.gov/web/amco>

Phone: 907.269.0350





## Approved Marijuana Products

### Babylon Company - 10322

6820 Rosewood Street #9

Anchorage, AK 99518

---

### Wax

<b>Type:</b>	Concentrate
<b>Product Description:</b>	Color is bright yellow to dark amber. Shape is amorphous. Texture is smooth to sticky to the touch. Greasy and waxy is appearance.
<b>Packaging:</b>	4mm silver mylar bags. Heat sealed and child resistant. Package must be cut to open and is resealable. Product is placed directly into acrylic or glass containers with a small piece of parchment paper below. Containers are sterilized prior to product placement.

**Product Depiction:**





## Approved Marijuana Products

### Babylon Company - 10322

6820 Rosewood Street #9

Anchorage, AK 99518

Alcohol and Marijuana Control Office

550 W 7<sup>th</sup> Avenue, Suite 1600

Anchorage, AK 99501

[marijuana.licensing@alaska.gov](mailto:marijuana.licensing@alaska.gov)

<https://www.commerce.alaska.gov/web/amco>

Phone: 907.269.0350

